



A000656371

OFFICE OF THE COUNTY RECORDER  
CASS COUNTY, MINNESOTA  
CERTIFIED, FILED, AND/OR  
RECORDED ON

12/23/2019 11:52:43 AM

AS DOC #: A000656371

PAGES: 2

REC FEES: 0.00

KATHRYN M. NORBY  
CASS COUNTY RECORDER

BY NG Dep TX#: 158821

## CERTIFICATE OF LOCATION OF GOVERNMENT CORNER

I hereby certify that this survey, plan, or report was prepared by me or under my direct supervision and that I am a duly Licensed Land Surveyor under the laws of the State of Minnesota.

*Patrick A. Trotter*

Patrick A. Trotter

Date: 12-13-2019 License No: 41002  
PLS# 41002

East Quarter Corner of Section 31, Township 136 N, Range 31 W, 5<sup>th</sup> P.M.

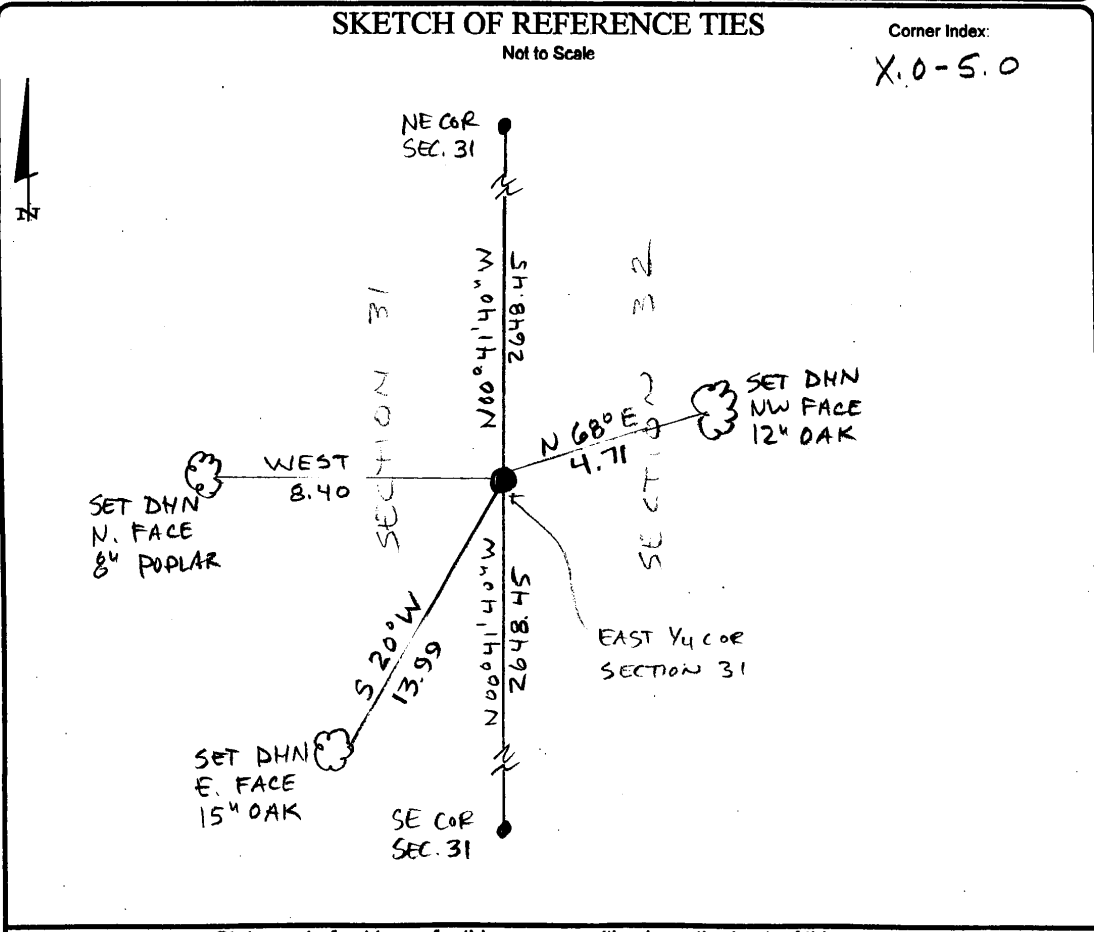
- On \_\_\_\_\_ found a \_\_\_\_\_
- left monument as found,  lowered monument,  removed monument (explain)
- On 12-4-2019 placed a 1/2" x 18" iron pipe with plastic cap stamped  
PLS 41002

### SKETCH OF REFERENCE TIES

Not to Scale

Corner Index:

X.0-5.0



**X.0-5.0**

**Statement of Evidence**

**East quarter corner, Section 31, Township 136 North, Range 31  
West, 5<sup>th</sup> Principal Meridian, Cass County, Minnesota**

1870 – R. Cronk, General Land Office (GLO) Surveyor originally established this corner position while surveying the interior subdivision lines of Township 136 North, Range 31 West. A wood post was set to mark the corner position with the following witnesses:

30" W. Pine    S 5° E        27 links

10" Bl. Oak    S 56° E       62 links

Information on file in the MN Historical Society, St. Paul, MN. Copies on file in the Cass County Highway Department/Surveyors Office (CCHD/SO).

1922 - EB Horst, in County Book D, p. 178 and Curo Book 185, p. 10 sets temporary corner.  
Information on file in the CCHD/SO.

1923 - John Greene, in County Resurvey E-45, indicates iron monument.  
Information on file in the CCHD/SO.

1925 - John Greene in County Book D, p. 180 and Curo Book 185, p. 16 finds iron and established the following witness:

Scribed oak stake    S 55° E        34.5 feet

Information on file in the CCHD/SO.

2019 – Patrick A. Trottier, RLS 41002 finds no evidence. Determines position by single proportion method between established NE and SE corners of Section 31. Sets 1/2" x 18" iron pipe with plastic cap stamped "RLS 41002" and establishes the witnesses as shown on the face of this drawing.

County Coordinates (Cass County South NAD83/96)

Northing        243690.36

Easting         460257.26