



A000656258
OFFICE OF THE COUNTY RECORDER
CASS COUNTY, MINNESOTA
CERTIFIED, FILED, AND/OR
RECORDED ON
 12/19/2019 10:25:09 AM
 AS DOC #: A000656258
 PAGES: 2
 REC FEES: 0.00
 KATHRYN M. NORBY
 CASS COUNTY RECORDER
 BY NG Dep TX#: 158741

Twp 140 Rge 25 Index No. J.0-15.0

CERTIFICATE OF LOCATION OF GOVERNMENT CORNER

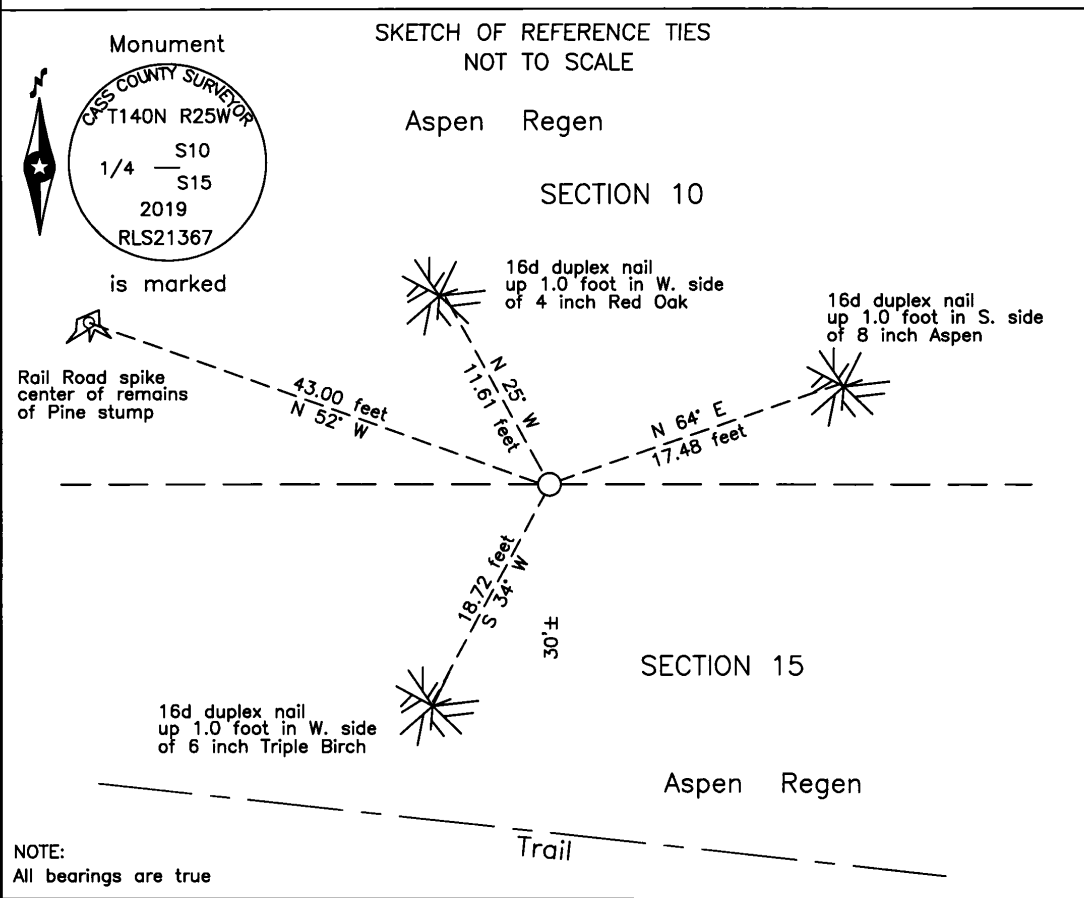
North Quarter corner of Section 15, Township 140 N., Range 25 W., 5th P.M.
 State of Minnesota, County of Cass

At the corner location shown on the sketch:

On 17 Oct 2019 found _____ remains of a 1920 witness tree.

left monument as found lowered monument removed monument (explain)

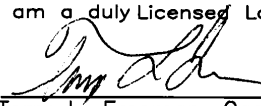
On 31 Oct 2019 placed an 1 inch by 32 inch aluminum tube with aluminum cap,
up 0.5 foot, 30 feet± north of woods trail.



NOTE:
All bearings are true

Statement of evidence relative to this corner location is on the back of this page.

I hereby certify that this survey, plan or report was prepared by me or under my direct supervision and that I am a duly Licensed Land Surveyor under the laws of the State of Minnesota.


 Terry L. Freeman, Cass County Surveyor
 Date 12/18/19 MN License No. 21367



Index No. J.0-15.0

Statement of Evidence

North Quarter corner Section 15, Township 140 North, Range 25 West, 5th Principal Meridian.

Oct. 1867 O.E. Garrison, General Land Office (GLO) Deputy Surveyor, in notes of the subdivision of Township 140 North, Range 25 West, set a post for the original corner and referenced it as follows:
10" Y. Pine S 88° E 37 links (24.42 feet) 5" Aspen N 81 1/2° W 10 links (6.60 feet)
Said records are on file with the Minnesota Historical Society, St. Paul, Minnesota, copies are filed with the Cass County Highway Department, Surveyor's Office (CCHD/SO).

Nov. 1920 E.B. Horst, LS 376, Deputy County Surveyor, Survey Record 481, Book C, page 533, and Curo Book 68, page 57, on file in the CCHD/SO, lists GLO witnesses and states "I find the stumps of which bear the original scribe marks also find a fallen stake near true point for cor. I set a large hub for the true ¼ cor." and witnesses as follows:
9" W. Pine N 76°45' E 35.7 feet 8" W. Pine N 52° W 43.0 feet

1937 Civilian Conservation Corps.(CCC) personnel, Washburn Lake notes, Book 2, page 62, on file in the Department of Natural Resources Office (DNR), states at 2640 from east set Approx. ¼ cor.

Sept. 2005 B. Hippen, technician, records of the CCHD/SO, searched area, 1 pine stump, in 12-15 year old regen in this area, no evidence of corner.

Oct. 2019 B. Hippen, technician, notes of the CCHD/SO, determined the centerline station for the 1920 survey must be mislabeled by 100 feet, a new search position is located 100 feet south, found remains of 1920 White Pine, set a 1 inch diameter 32 inch long aluminum tube with aluminum cap, up 0.6 foot, from said witness and witnessed as follows:
Pine stump(1920) N 52° W 43.0 feet 4" Red Oak N 25° W 11.61 feet
6" Tri Birch S 34° W 18.72 feet 8" Aspen N 64° E 17.48 feet

The monument, recovered and established references for the position are shown on the face of this document.

Analysis of the recovered record data, field evidence and survey measurements, indicates that the monument set by CCHD/SO in 2019 is the correct perpetuation of this corner.

County Coordinates (Cass County North)

Northing 152724.78

Easting 597228.28