



A000655867

OFFICE OF THE COUNTY RECORDER
CASS COUNTY, MINNESOTA
CERTIFIED, FILED, AND/OR
RECORDED ON

12/5/2019 10:21:15 AM

AS DOC #: A000655867

PAGES: 2

REC FEES: 0.00

KATHRYN M. NORBY
CASS COUNTY RECORDER

BY SF _____ Dep TX#: 158387

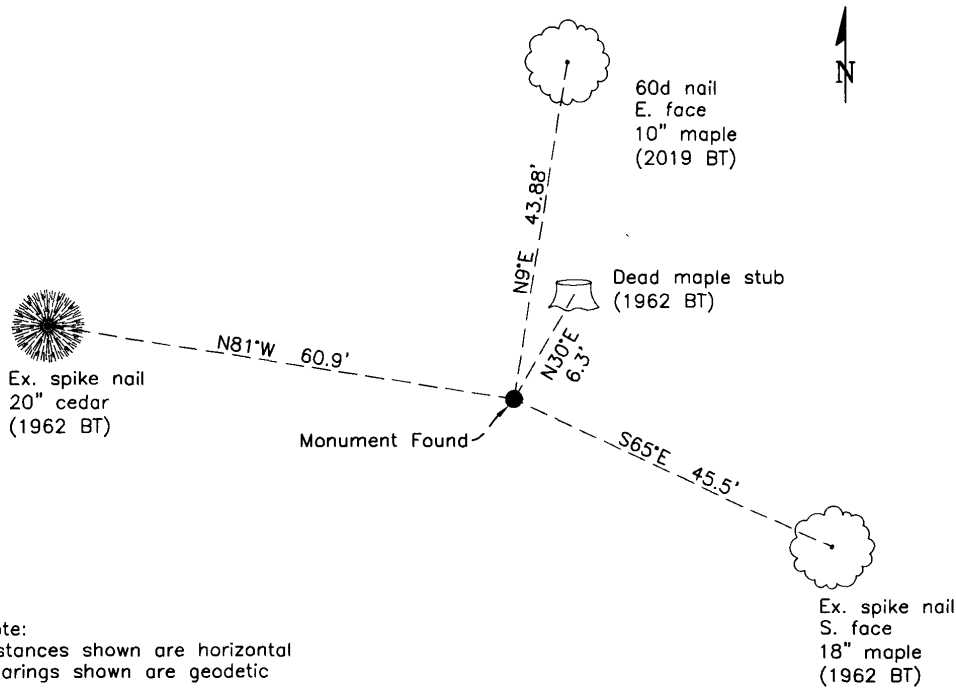
CERTIFICATE OF LOCATION OF GOVERNMENT CORNER

Northeast Corner of Section 36, Township 145 N, Range 30 W, 5th P.M.
County of Cass, State of Minnesota

At the corner location shown on the sketch :

- On 9/17/2019 found 3" GLO brass tablet, set in 6" diameter concrete cylinder
- left monument as found lowered monument removed monument (explain)
- On _____ set _____

SKETCH OF REFERENCE TIES (NOT TO SCALE)



Statement of evidence relative to this corner location is on the back of this page

I hereby certify that this survey, plan, or report was prepared by me or under my direct supervision and that I am a duly Licensed Land Surveyor under the laws of the state of Minnesota.

AJ Skattum
Aaron J. Skattum
MN License No. 54139

12-2-2019
Date

Corner Index No. V.0-25.0
GCDB ID No. 700200

Cass County Coordinates
North Zone, NAD83(2011)
N: 295159.106
E: 450458.375



Corner Index No. V.0-25.0

STATEMENT OF EVIDENCE

Northeast Corner of Sec. 36, T.145N., R.30W., 5th P.M., Cass County, MN

1873 P.H. Conger, US General Land Office, originally established this corner while surveying the east line of this township, and set wood post to mark the corner position with the following witnesses:

5" Poplar	N15°E	18 links (11.88')
3" Poplar	N26°W	13 links (8.58')
4" Poplar	S60°W	5 links (3.30')
3" Poplar	S62°E	10 links (6.60')

Information on file at the MN Historical Society, St. Paul, MN. Copies filed with the Cass County Highway Department/Surveyor's Office (CCHD/SO).

1900 & 1903 T.M. Fowble, US Army Corps of Engineers surveyor, indicates this is a known corner on the map of the Leech Lake and Lake Winnibigoshish Reservoirs survey.

Information on file at the CCHD/SO.

1933 W. Bandy, GLO surveyor, during a dependent resurvey of the east line of this township (among other things) established this corner by proportionate distance, having found no evidence of the original post or bearing trees. The monument set was a 3-1/2" brass tablet embedded in a 6"x24" concrete cylinder to mark the corner. The following ties were noted:

6" Yellow Birch	N60.75°E	33 links (21.78')
6" White Birch	S80°E	23 links (15.18')
10" Elm	S29.25°W	56 links (39.96')
10" Elm	N25°W	15 links (9.90')

Information on file at the CCHD/SO.

1935 L. Henry, CCC Party Chief (CCC Book 106, p. 31, and CCC Book 107, p. 1, USFS records) found the 1933 GLO monument and noted the following ties:

8" Ash	N27°W	15.9 links (10.49')*
4" Birch	S79°E	23.0 links (15.18')
8" Ash	S30°W	36.3 links (23.96')*
5" Birch	N61°E	33.3 links (21.98')

*These ties are shown as they appear in the above-referenced CCC field books, but the calls for ash trees are assumed to be in error, and were more likely elm trees as noted by surveyors before and after this survey. The notes also show a distance of 36.3 links to the SW bearing tree, but this is more likely 56 links, also as noted by surveyors before and after this survey.

US Forest Service (USFS) records cited herein are on file at the Chippewa National Forest Supervisor's Office, Cass Lake, MN.

1937 H. Hennes, US Forest Service (Form 874-9, USFS Records) found a "brass cap, surrounded by cement", 2" above ground, and noted the following ties:

10" Elm	N27°W	16 links
4" Yellow Birch	N60°E	33 links
4.5" White Birch	S80°E	23 links
12" Elm	S29°W	56 links

1962 R. McDonald, US Forest Service (Corner Book 1, Page 5, USFS Records) found the 1933 GLO monument as described. The following ties were noted:

10" Elm	S29.25°W	39.96'	1933 BT, now 12" elm, scribe overgrown
10" Elm	N25°W	9.90'	1933 BT, now decayed stump
15" Cedar	N81°W	60.9'	new BT
5" Maple	N30°E	6.3'	new BT
9" Maple	S65°E	45.5'	new BT

This corner was previously certified by P. Meyer, USFS, and recorded in 1962, then later re-recorded in 2013 as Doc. A000590395, on file at the Cass County Recorder's Office.

2019 A. Skattum, US Forest Service (Land Lines Book 31, Page 58, USFS records) found the 1933 GLO monument in good condition, approximately 2" above ground level. The following ties were noted:

15" Cedar	N81°W	60.9'	1962 BT, now 20"
5" Maple	N30°E	6.3'	1962 BT, now dead stub
9" Maple	S65°E	45.5'	1962 BT, now 18"
10" Maple	N9°E	43.88'	new BT
17" Basswood	S40°W	3.5'	blazed on 4 sides (by others) w/ old FS Location Posters by Krause (1975) and Marvin (1935)