



A000655296

OFFICE OF THE COUNTY RECORDER
CASS COUNTY, MINNESOTA
CERTIFIED, FILED, AND/OR
RECORDED ON

11/14/2019 10:32:43 AM

AS DOC #: A000655296

PAGES: 2

REC FEES: 0.00

KATHRYN M. NORBY
CASS COUNTY RECORDER

BY SF _____ Dep TX#: 157910

Page 1 of 2
A000655296

Index No. X.0 - 5.0

CERTIFICATE OF LOCATION OF GOVERNMENT CORNER

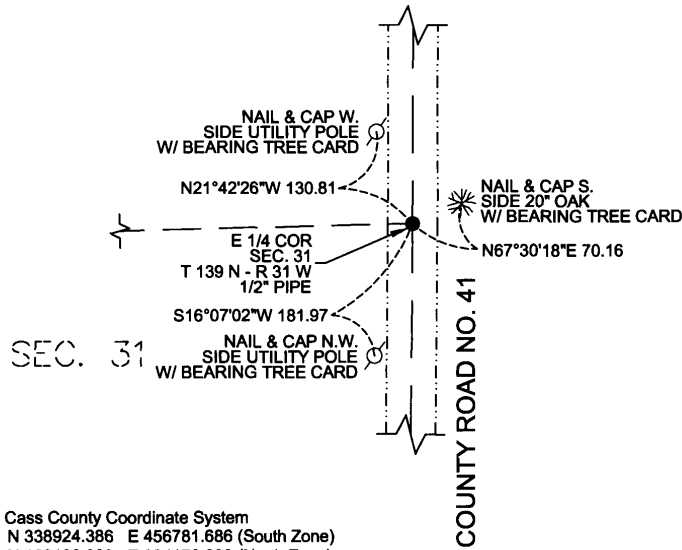
E 1/4 Corner of Section 31 , Township 139 North, Range 31 West of the 5th P.M. State of Minnesota, County of Cass .

At the corner location shown on the sketch:

On 10/28/2019 found a 1/2" pipe

On 10/28/2019 left monument as found.

SKETCH OF REFERENCE TIES



Cass County Coordinate System
N 338924.386 E 456781.686 (South Zone)
N 103106.900 E 394176.230 (North Zone)

● INPLACE IRON MONUMENT

NOTE: THE BEARINGS SHOWN ARE BASED ON CASS COUNTY (SOUTH ZONE)

I hereby certify that this survey, plan, report was prepared by me or under my direct supervision and that I am a duly Registered Land Surveyor under the laws of the State of Minnesota.

Brad M. Nyberg

Date November 6th, 2019 License No. 42620



Index No. X.0 - 5.0

STATEMENT OF EVIDENCE

East Quarter Corner of Section 31, Township 139 North, Range 31 West, Cass County, Minnesota.

- 1870 The U.S. General Land Office field Surveyor Mahlon Black's notes, on file in the MN Secretary of State's Office, describe this original corner as a post for 1/4 section corner, from which a 12" Black Pine bears S 31° W, 28 links and a 6" aspen bears N 34° E, 8 links.
- 2002 The Minnesota Department of Transportation found a 1/2" pipe with cap stamped RLS 13620 at the split distance between the NE and SE corners in the middle of a gravel road at the Quarter Corner location and established three new ties. The Minnesota Department of Transportation accepts this position as the correct location for the East Quarter Corner of Section 31, Township 139 N., Range 31 W., 5th Principia Meridian, Cass County, Minnesota.
- 2019 Nyberg Surveying did not find any evidence of the original section corner at this location. Eric Nyberg with Nyberg Surveying found a 1/2" pipe 12"± below the surface of County Road No. 41. Nyberg Surveying left the monument as found and its position was accepted as the East Quarter Corner of Section 31.