



A000655295

OFFICE OF THE COUNTY RECORDER  
CASS COUNTY, MINNESOTA  
CERTIFIED, FILED, AND/OR  
RECORDED ON

11/14/2019 10:32:42 AM

AS DOC #: A000655295

PAGES: 2

REC FEES: 0.00

KATHRYN M. NORBY  
CASS COUNTY RECORDER

BY SF \_\_\_\_\_ Dep TX#: 157910

Page 1 of 2  
A000655295

Index No. X.0 - 1.0

### CERTIFICATE OF LOCATION OF GOVERNMENT CORNER

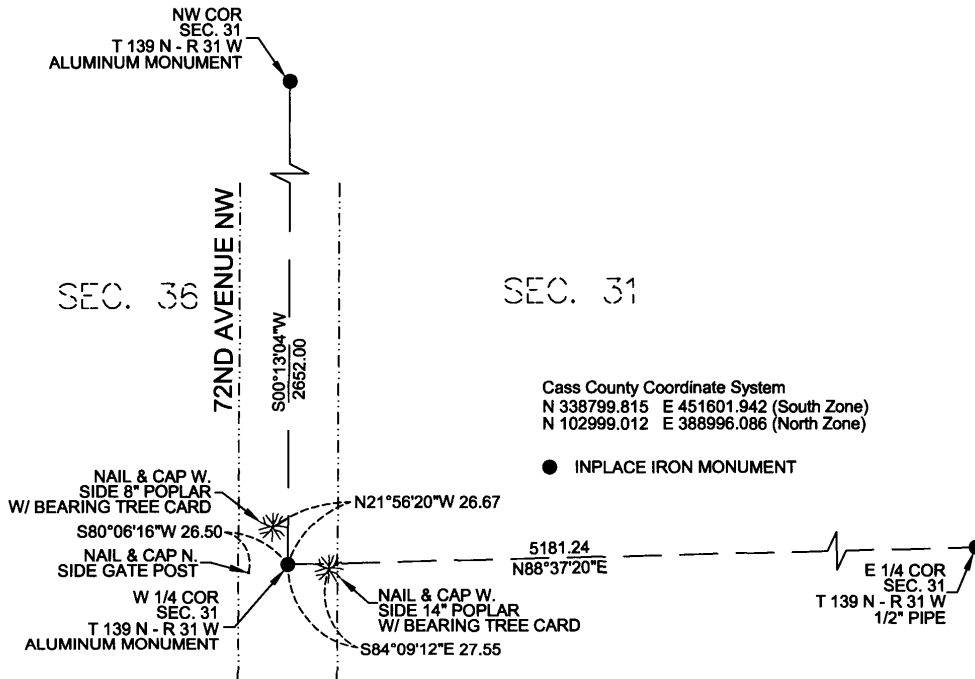
W 1/4 Corner of Section 31, Township 139 North, Range 31 West of the 5th P.M. State of Minnesota, County of Cass.

At the corner location shown on the sketch:

On 10/28/2019 found a Aluminum Monument

On 10/28/2019 left monument as found.

#### SKETCH OF REFERENCE TIES



Cass County Coordinate System  
N 338799.815 E 451601.942 (South Zone)  
N 102999.012 E 388996.086 (North Zone)

● INPLACE IRON MONUMENT

NOTE: THE BEARINGS SHOWN ARE BASED ON CASS COUNTY (SOUTH ZONE)

I hereby certify that this survey, plan, report was prepared by me or under my direct supervision and that I am a duly Registered Land Surveyor under the laws of the State of Minnesota.

Brad M. Nyberg

Date November 6th, 2019 License No. 42620

Statement of evidence for this corner position is on the back of this page

(FILE NO. 10116)

Index No. X.0 - 1.0**STATEMENT OF EVIDENCE**

West Quarter Corner of Section 31, Township 139 North, Range 31 West, Cass County, Minnesota.

1860 The U.S. General Land Office Surveyor J.W. Myers field notes, on file in the MN Secretary of State's Office, describe this original corner as a new post for 1/4 section corner, from which a 12" Pine bears S 60° W, 13 links and a 12" Pine bears S 80° E, 31 links.

No surveys are on file at the Cass County Recorders Office for the West Quarter Corner of Section 31, Township 139 North, Range 31 West.

2004 In January, a Minnesota Department of Transportation Survey Crew searched and found no evidence of the original post or sign of occupation at the Quarter Corner location. The Minnesota Department of Transportation computes corner lost for the West Quarter Corner of Section 31, Township 139 N., Range 31 W., 5th Principia Meridian, Cass County, Minnesota.

2008 Hubbard County Survey Department set corner lost midpoint and on line between the NE and SE corners of Section 36, Township 139 North, Range 32 West. Filed a certificate of location of government corner in Hubbard County as Document No. A00033972 marked ties 8" Aspen N 85° E 22.53', 5" J. Pine S 35° W 39.73'

2019 Nyberg Surveying did not find any evidence of the original section corner at this location. Eric Nyberg with Nyberg Surveying found an Aluminum Monument 12"± below the surface of 72nd Avenue NW. The position was found to measure 2652.00 feet from the Northwest Corner of Section 31 and 5181.24 feet from the East Quarter Corner of Section 31. Nyberg Surveying left the monument as found and its position was accepted as the West Quarter Corner of Section 31.