



A000655293
OFFICE OF THE COUNTY RECORDER
CASS COUNTY, MINNESOTA
CERTIFIED, FILED, AND/OR
RECORDED ON
11/14/2019 10:32:40 AM
AS DOC #: A000655293
PAGES: 2
REC FEES: 0.00
KATHRYN M. NORBY
CASS COUNTY RECORDER
BY SF Dep TX#: 157910

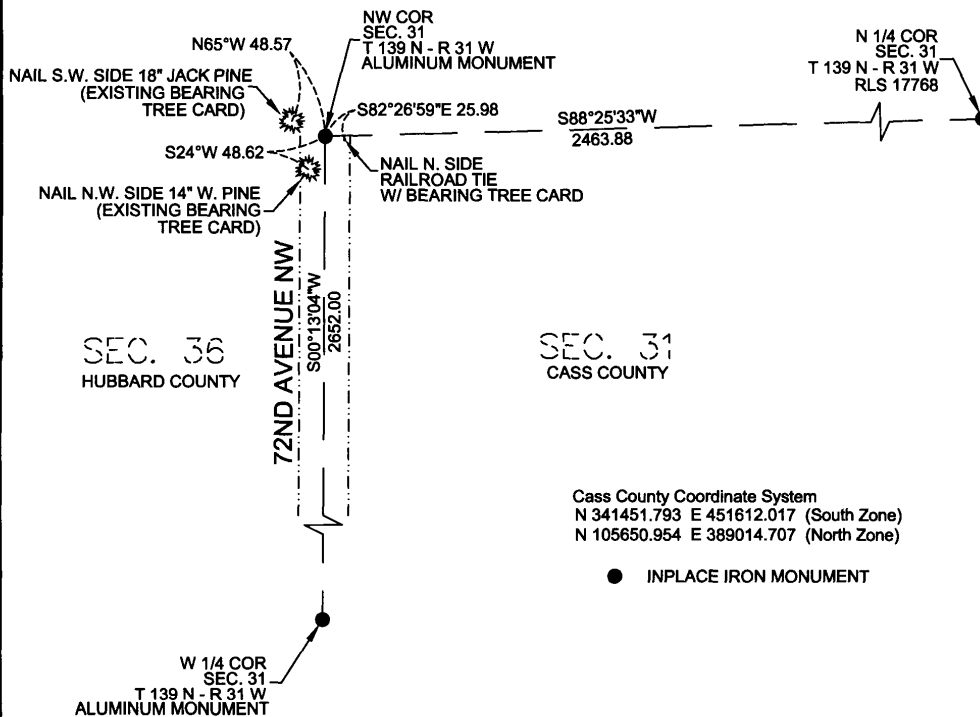
Index No. V.0 - 1.0

CERTIFICATE OF LOCATION OF GOVERNMENT CORNER

NW Corner of Section 31, Township 139 North, Range 31 West of the 5th P.M. State of Minnesota, County of Cass.

At the corner location shown on the sketch:
On 10/28/2019 found a Aluminum Monument
On 10/28/2019 left monument as found.

SKETCH OF REFERENCE TIES



NOTE: THE BEARINGS SHOWN ARE BASED ON CASS COUNTY (SOUTH ZONE)

I hereby certify that this survey, plan, report was prepared by me or under my direct supervision and that I am a duly Registered Land Surveyor under the laws of the State of Minnesota.

Brad M. Nyberg

Date November 6th, 2019 License No. 42620



Index No. V.0 - 1.0

STATEMENT OF EVIDENCE

Northwest Corner of Section 31, Township 139 North, Range 31 West, Cass County, Minnesota.

- 1860 The U.S. General Land Office Surveyor J.W. Myers field notes, on file in the MN Secretary of State's Office, describe this original corner as a set post for section corner, from which a 10" Spruce bears S 80° W, 8 links, 10" Spruce bears N 20° W, 12" Pine bears S 43° E, and a 12" Spruce bears N 60° E, 49 links.
- 2004 In January, the Minnesota Department of Transportation found a square spike of unknown origin at the location for the Northwest Corner of Section 31. The Minnesota Department of Transportation accepts this position as the correct location for the Northwest Corner of Section 31, Township 139 N., Range 31 W., 5th Principal Meridian, Cass County, Minnesota.
- 2005 Cass County Highway Department / Surveyors Office found a 1" iron pin, 16' west of centerline of trail and 2' north of centerline old grade to east marked BTs. 8" J. Pine N 65° W 48.57', corner fence post N 51° E 27.98', fence brace post S 54° E 30.91' and 6" W Pine S 24° W 48.62'.
- 2008 Hubbard County Survey Department found iron pin as found in 2005. Replaced with a 2 1/2" aluminum cap on 3' repair. Filed a certificate of location of government corner in Hubbard County as Document No. A000333973.
- 2019 Nyberg Surveying did not find any evidence of the original section corner or the square spike at this location. Eric Nyberg with Nyberg Surveying found an Aluminum Monument 12"± below the surface of 72nd Avenue NW. The position was found to measure 2652.00 feet from the West Quarter Corner of Section 31 and 2463.88 feet from the North Quarter Corner of Section 31 . Nyberg Surveying left the monument as found and its position was accepted as the Northwest Corner of Section 31.