



A000653753
OFFICE OF THE COUNTY RECORDER
CASS COUNTY, MINNESOTA
CERTIFIED, FILED, AND/OR
RECORDED ON
 9/26/2019 11:31:04 AM
 AS DOC #: A000653753
 PAGES: 2
 REC FEES: 0.00
KATHRYN M. NORBY
CASS COUNTY RECORDER
 BY NG Dep TX#: 156684

CERTIFICATE OF LOCATION OF GOVERNMENT CORNER

I hereby certify that this survey, plan, or report was prepared by me or under my direct supervision and that I am a duly Licensed Land Surveyor under the laws of the State of Minnesota.

Patrick A. Trotter
 Patrick A. Trotter

Date: 9-19-2019 License No: 41002
 PLS# 41002

East Quarter Corner of Section 32, Township 137 N, Range 31 W, 5th P.M.

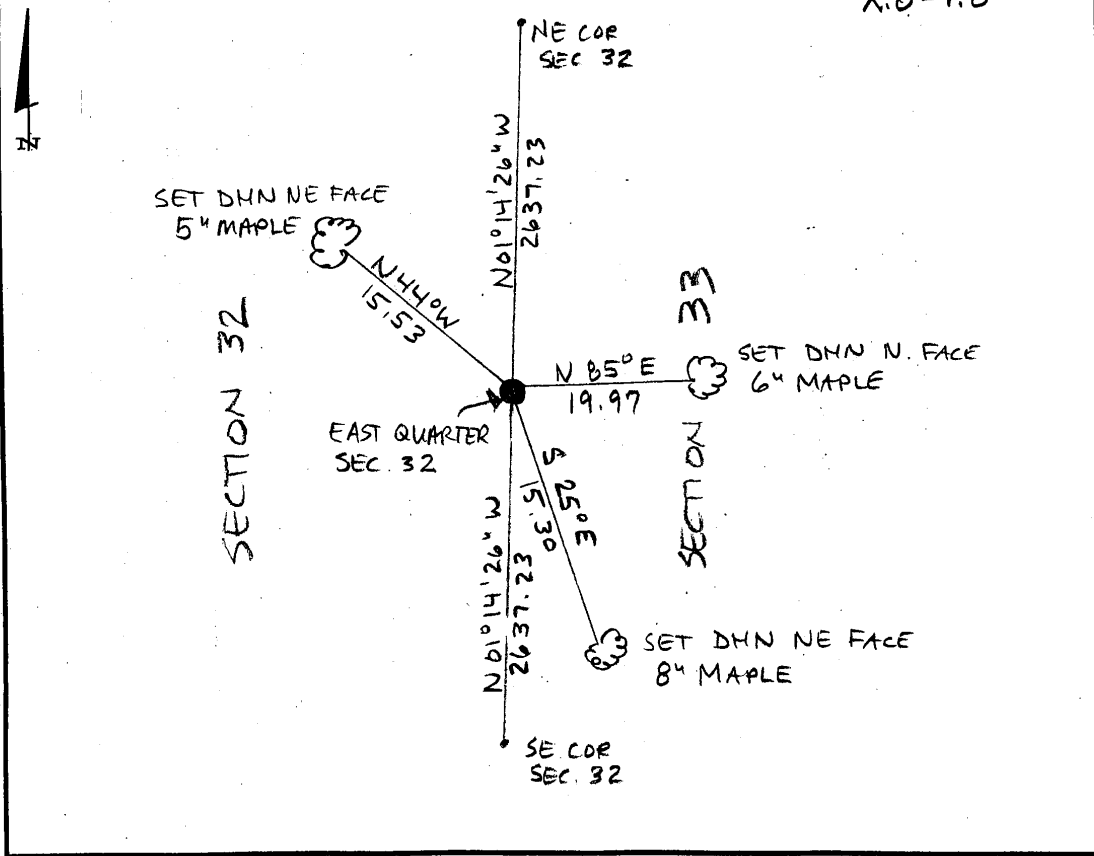
On _____ found a _____
 left monument as found, lowered monument, removed monument (explain)
 On 8-21-19 placed a 1/2" x 18" iron pipe with plastic cap stamped
"RLS 41002"

SKETCH OF REFERENCE TIES

Not to Scale

Corner Index:

X.0-9.0



X.0-9.0

Statement of Evidence

**East quarter corner, Section 32, Township 137 North, Range 31
West, 5th Principal Meridian, Cass County, Minnesota**

1870 – R. Cronk, General Land Office (GLO) Surveyor originally established this corner position while surveying the interior subdivision lines of Township 137 North, Range 31 West. A wood post was set to mark the corner position with the following witnesses:

20" N. Pine N 50° W 65 links

24" N. Pine N 61° E 105 links

Information on file in the MN Historical Society, St. Paul, MN. Copies on file in the Cass County Highway Department/Surveyors Office (CCHD/SO).

2019 – Patrick A. Trottier, RLS 41002 finds no evidence of corner and determines position by single proportion method between established NE and SE corners of Section 32. Sets 1/2" x 18" iron pipe with plastic cap stamped "RLS 41002" as the perpetuation of the corner and establishes the witnesses as shown on the face of this drawing.

County Coordinates (Cass County South NAD83/96)

Northing 275582.56

Easting 461797.83