



A000653751

OFFICE OF THE COUNTY RECORDER
CASS COUNTY, MINNESOTA
CERTIFIED, FILED, AND/OR
RECORDED ON

9/26/2019 11:31:02 AM

AS DOC #: A000653751

PAGES: 2

REC FEES: 0.00

KATHRYN M. NORBY
CASS COUNTY RECORDER

BY NG Dep TX#: 156684

Page 1 of 2
A000653751

CERTIFICATE OF LOCATION OF GOVERNMENT CORNER

I hereby certify that this survey, plan, or report was prepared by me or under my direct supervision and that I am a duly Licensed Land Surveyor under the laws of the State of Minnesota.

Patrick A. Trotter

Patrick A. Trotter

Date: 9-19-2019 License No: 41002
PLS# 41002

Northeast Corner of Section 32, Township 137 N, Range 31 W, 5th P.M.

On _____ found a _____

left monument as found, lowered monument, removed monument (explain)

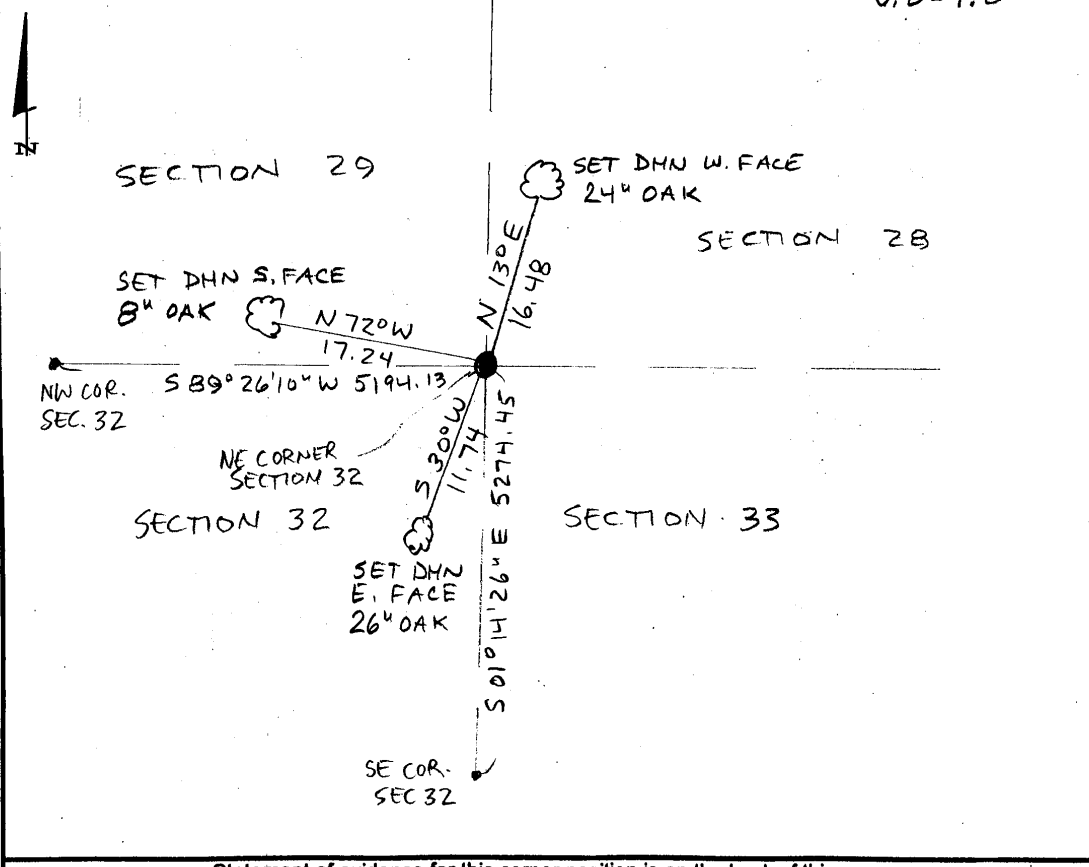
On 8-28-19 placed a 1/2" x 18" iron pipe with plastic cap stamped
URLS 41002, up 0³

SKETCH OF REFERENCE TIES

Corner Index:

V.D-9.0

Not to Scale





V.0-9.0

Statement of Evidence

**Northeast corner, Section 32, Township 137 North, Range 31
West, 5th Principal Meridian, Cass County, Minnesota**

1870 – R. Cronk, General Land Office (GLO) Surveyor originally established this corner position while surveying the interior subdivision lines of Township 137 North, Range 31 West. A wood post was set to mark the corner position with the following witnesses:

8" N. Pine	N 61° E	40 links
8" N. Pine	N 55° W	70 links
6" Aspen (dead)	S 57° W	85 links
7" Aspen (dead)	S 15° E	160 links

Information on file in the MN Historical Society, St. Paul, MN. Copies on file in the Cass County Highway Department/Surveyors Office (CCHD/SO).

2019 – Patrick A. Trotter, RLS 41002 finds no evidence of corner and determines position by double proportion method utilizing the NE corner of Section 36, T137N R32W and the NE corner Section 33, the SE corner Section 32, and the NE corner of Section 20, all in T137N R31 W. Sets 1/2" x 18" iron pipe with plastic cap stamped "RLS 41002" as the perpetuation of the corner and establishes the witnesses as shown on the face of this drawing.

County Coordinates (Cass County South NAD83/96)
Northing 278219.16
Easting 461740.73