



A000653744

OFFICE OF THE COUNTY RECORDER
 CASS COUNTY, MINNESOTA
 CERTIFIED, FILED, AND/OR
 RECORDED ON

9/26/2019 11:30:55 AM

AS DOC #: A000653744

PAGES: 2

REC FEES: 0.00

KATHRYN M. NORBY
 CASS COUNTY RECORDER

BY NG Dep TX#: 156684

CERTIFICATE OF LOCATION OF GOVERNMENT CORNER

I hereby certify that this survey, plan, or report was prepared by me or under my direct supervision and that I am a duly Licensed Land Surveyor under the laws of the State of Minnesota.

Patrick A. Trotter

Patrick A. Trotter

Date: 9-19-2019 License No: 41002
 PLS# 41002

Northeast Corner of Section 30, Township 137 N, Range 31 W, 5th P.M.

On _____ found a _____

left monument as found, lowered monument, removed monument (explain)

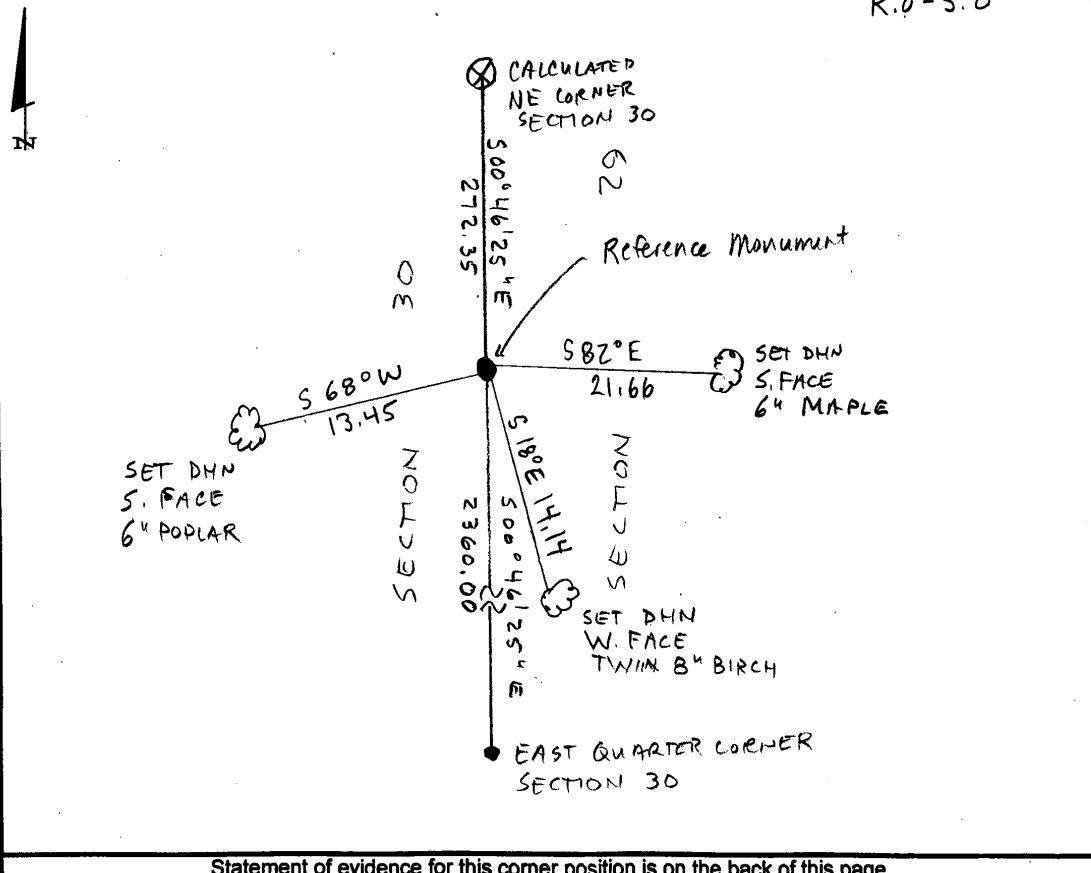
On 9-10-2019 placed a 1/2" x 18" pipe with plastic cap stamped "RLS 41002" as a reference monument lying 272.35 feet south of calculated position

SKETCH OF REFERENCE TIES

Not to Scale

Corner Index:

R.0-5.0



R.0-5.0

Statement of Evidence

**Northeast corner, Section 30, Township 137 North, Range 31
West, 5th Principal Meridian, Cass County, Minnesota**

1870 – R. Cronk, General Land Office (GLO) Surveyor originally established this corner position while surveying the interior subdivision lines of Township 137 North, Range 31 West. A wood post was set to mark a witness corner position 2.5 chains south of true corner position with the following witnesses:

12" N. Pine S 60° E 19 links
8" W. Birch S 84° W 30 links

Information on file in the MN Historical Society, St. Paul, MN. Copies on file in the Cass County Highway Department/Surveyors Office (CCHD/SO).

2019 – Patrick A. Trottier, RLS 41002 finds no evidence of corner and determines position by double proportion method utilizing the NE corner of Section 25, T137N R32W and the NE corner Section 28, the SE corner Section 31, and the NE corner of Section 6, all in T137N R31 W. Position falls in swamp. Sets 1/2" x 18" iron pipe with plastic cap stamped "RLS 41002" as a reference monument to the true corner, lying 272.35 feet south of true corner and on east line of Northeast Quarter, said section, and establishes the witnesses to the reference monument as shown on the face of this drawing.

County Coordinates (Cass County South NAD83/96)

Calculated corner position:

Northing 283432.27
Easting 456475.78

Reference monument position:

Northing 283159.95
Easting 456479.45