



A000653743

OFFICE OF THE COUNTY RECORDER
 CASS COUNTY, MINNESOTA
 CERTIFIED, FILED, AND/OR
 RECORDED ON

9/26/2019 11:30:54 AM

AS DOC #: A000653743

PAGES: 2

REC FEES: 0.00

KATHRYN M. NORBY
 CASS COUNTY RECORDER

BY NG Dep TX#: 156684

CERTIFICATE OF LOCATION OF GOVERNMENT CORNER

I hereby certify that this survey, plan, or report was prepared by me or under my direct supervision and that I am a duly Licensed Land Surveyor under the laws of the State of Minnesota.

Patrick A. Trotter

Patrick A. Trotter

Date: 9-19-2019 License No: 41002
 PLS# 41002

Northeast Corner of Section 36, Township 137N, Range 32W, 5th P.M.

On _____ found a _____

left monument as found; lowered monument; removed monument (explain)

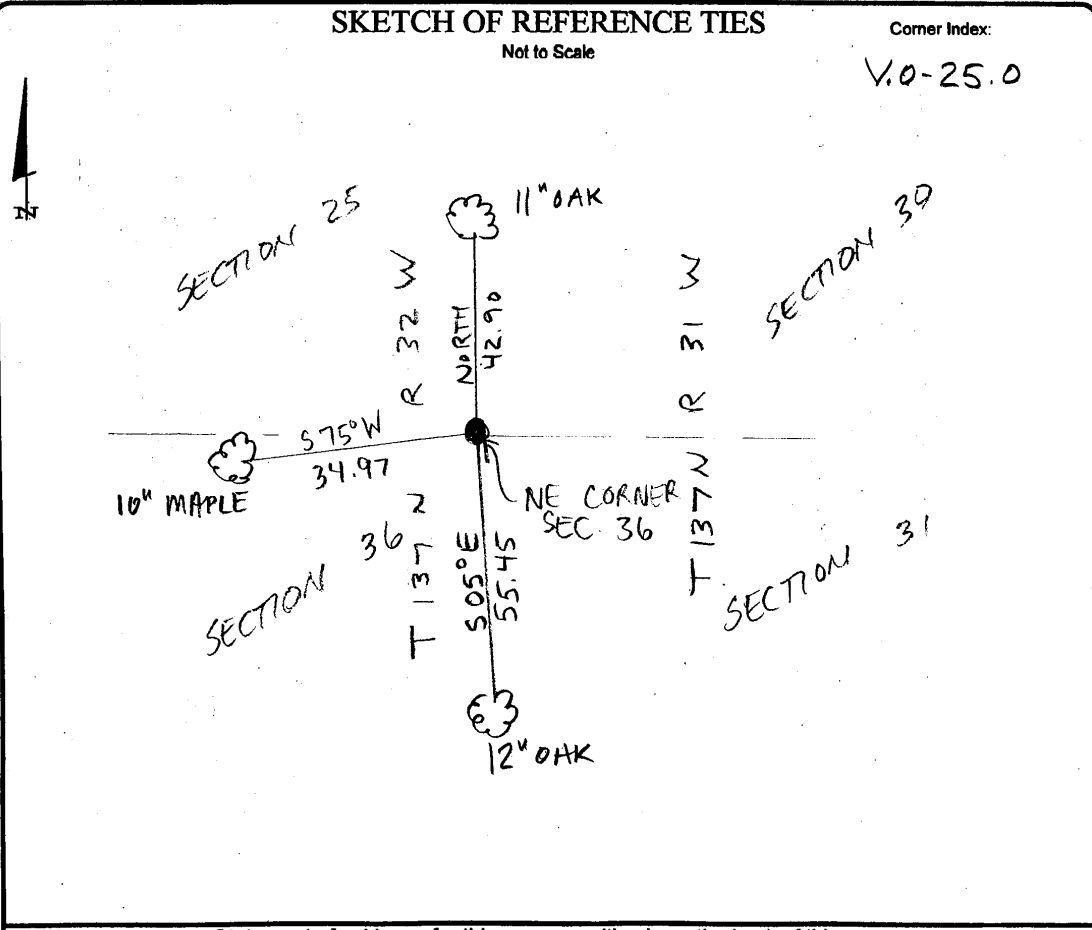
On 8-20-19 placed a 1/2" x 18" iron pipe with plastic cap stamped "RLS 41002", up 0 3/4"

SKETCH OF REFERENCE TIES

Not to Scale

Corner Index:

V.O-25.0



V.0-25.0

Statement of Evidence

**Northeast corner, Section 36, Township 137 North, Range 32
West, 5th Principal Meridian, Cass County, Minnesota**

1860 – J.W. Myers, General Land Office (GLO) Deputy Surveyor notes for the survey of the 4th Guide Meridian set a wood post to mark the corner position with the following witnesses:

- 6" W. Birch N 60° W 6 links
- 6" W. Birch S 48° W 22 links
- 8" W. Birch S 60° E 28 links
- 18" W. Pine N 32° E 20 links

Information on file in the MN Historical Society, St. Paul, MN. Copies on file in the Cass County Highway Department/Surveyors Office (CCHD/SO).

1913 – J. W. Curo, LS 1428, County Surveyors Record Book A page 602, found the stumps or roots of all GLO BTs, from which he set a 2.5" x 48" galvanized iron pipe with cap and the following witnesses:

- 12" Pine stump S 46° E 18.30 feet
- 18" Pine stub N 68° 50' E 16.65 feet

Information on file in the CCHD/SO.

1915 – Township Road Order F deems survey unnecessary as road is wholly on a section line. Information on file in the CCHD/SO.

2003 – J. D. Walker, LS 16098, in unrecorded Certificate of Location, found 2" iron pipe, up 2.5', on west facing slope approximately 100' easterly of swamp and established the following witnesses:

- 8" Oak North 42.90 feet
- 9" Oak 175° 55.45 feet
- 7" Maple 255° 34.97 feet

Information on file in the CCHD/SO.

2011 – CCHD/SO staff found all 2003 ties and a 2.5" x 48" iron pipe with plumber cap laying on ground.

Information on file in the CCHD/SO.

2019 – Patrick A. Trottier, RLS 41002 finds all 2003 ties, and 2.5" x 48" iron pipe with plumber cap laying on ground. From ties, sets 1/2" x 18" iron pipe with plastic cap stamped "RLS 41002" as the perpetuation of the corner and updates the size of the witnesses trees as shown on the face of this drawing.

County Coordinates (Cass County South NAD83/96)

Northing 278108.85

Easting 451385.08