



A000652802

OFFICE OF THE COUNTY RECORDER  
CASS COUNTY, MINNESOTA  
CERTIFIED, FILED, AND/OR  
RECORDED ON

8/29/2019 10:58:44 AM

AS DOC #: A000652802

PAGES: 2

REC FEES: 0.00

KATHRYN M. NORBY  
CASS COUNTY RECORDER

BY SF Dep TX#: 155990

Index No. J.O-7.0

I hereby certify that this document was prepared by me or under my direct supervision and that I am a duly Licensed Land Surveyor under the laws of the State of Minnesota

Paul Herkenhoff  
PAUL HERKENHOFF

Date 7/29/19 License No. 45875

### CERTIFICATE OF LOCATION OF GOVERNMENT CORNER

NORTH QUARTER Corner of Section 17, Township 138, Range 32, 5TH P.M.

STATE OF MINNESOTA, County of CASS

At the location shown on the sketch:

On 5/15/19 found 8 INCH CONCRETE MONUMENT  
DATE

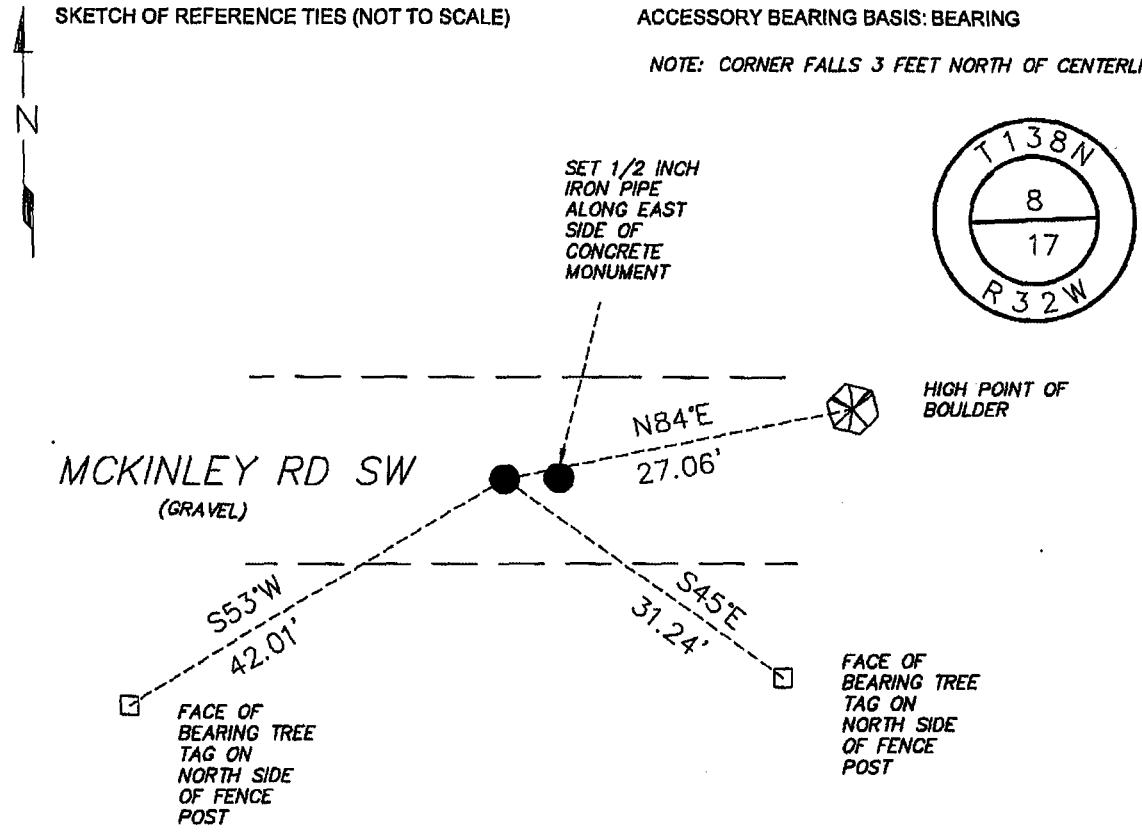
left monument as found,  lowered monument,  removed monument (explain)

On \_\_\_\_\_ placed an \_\_\_\_\_  
DATE

SKETCH OF REFERENCE TIES (NOT TO SCALE)

ACCESSORY BEARING BASIS: BEARING

NOTE: CORNER FALLS 3 FEET NORTH OF CENTERLINE



N= 325603.246 E= 427652.660  
 DATUM= CASS COUNTY SOUTH  
NAD 83/96 ADJ. US SURVEY FT.

Statement of evidence relative to this corner is on back of page.

Page 1 of 2 A000652802





**Index No. J.0-7.0**

**Statement of Evidence:**

**North Quarter Corner of Section 17, Township 138, Range 32 West, 5th Principle Meridian, Cass County, Minnesota**

Dec. 1870 M. Black, General Land Office (GLO) Deputy Surveyor set a post for the original corner in the subdivision and noted the following accessory.

12" White Pine            S7.5W            278 links

1908 John W. Curo, LS 1428, Cass County Surveyor found the original government post and the original bearing tree. Surveyor's Record Book A, Pages 418-424. Filed in the office of the Cass County Highway/Surveyor's Office.

1912 John W. Curo, LS 1428, Cass County Surveyor in a continuation of his 1908 work, replaced the post with an 8" x 8" x 36" cement post for the corner.

2019 Lakes Area Surveying recovered a planted 8" x 8" x 36" cement monument during an excavation. The monument was in good condition and did not appear to be disturbed. Accepting the found monument as the best available evidence for the corner. Reference ties were found or set as shown on the front of this certificate.

**Analysis of the recovered record data, field evidence and survey measurements, indicates that the monument found by Lakes Area Surveying in 2019 is the accepted location of this corner.**