



A000652800

OFFICE OF THE COUNTY RECORDER  
CASS COUNTY, MINNESOTA  
CERTIFIED, FILED, AND/OR  
RECORDED ON

8/29/2019 10:58:42 AM

AS DOC #: A000652800

PAGES: 2

REC FEES: 0.00

KATHRYN M. NORBY  
CASS COUNTY RECORDER

BY SF \_\_\_\_\_ Dep TX#: 155990

Index No. E.O-3.0

I hereby certify that this document was prepared by me or under my direct supervision and that I am a duly Licensed Land Surveyor under the laws of the State of Minnesota

*Paul Herkenhoff*  
\_\_\_\_\_  
PAUL HERKENHOFF

Date 7/29/19 License No. 45875

### CERTIFICATE OF LOCATION OF GOVERNMENT CORNER

NORTH QUARTER Corner of Section 7, Township 138, Range 32, 5TH P.M.

STATE OF MINNESOTA, County of CASS

At the location shown on the sketch: A 1/2 INCH IRON PIN IN AN 8 INCH CONCRETE

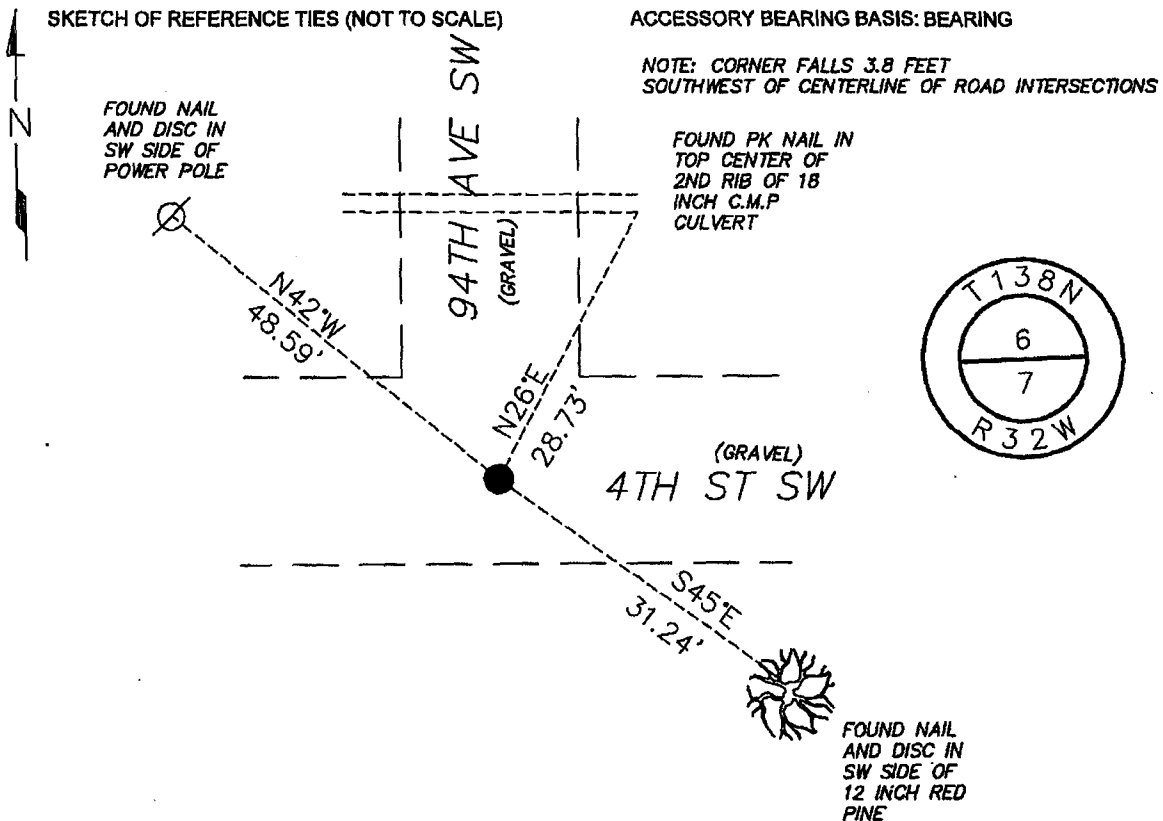
On 5/15/19 found MONUMENT  
DATE

left monument as found,  lowered monument,  removed monument (explain)

On \_\_\_\_\_ placed an \_\_\_\_\_  
DATE

SKETCH OF REFERENCE TIES (NOT TO SCALE)

ACCESSORY BEARING BASIS: BEARING



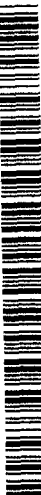
N= 331017.150 E= 422369.402

DATUM= CASS COUNTY SOUTH

NAD 83/96 ADJ.

US SURVEY FT.

Statement of evidence relative to this corner is on back of page.





Index No. E.0-3.0

Statement of Evidence:

**North Quarter Corner of Section 7, Township 138, Range 32 West, 5th Principle Meridian, Cass County, Minnesota**

- Dec. 1870 M. Black, General Land Office (GLO) Deputy Surveyor set a post for the original corner in the subdivision and noted the following accessories.
- |                 |        |            |
|-----------------|--------|------------|
| 18" Norway Pine | N26.5E | 3.69 links |
| 6" Black Pine   | S68.5W | 4.21 links |
- (It is assumed that there is a scrivener's error in regards to the distances from the corner to the bearing trees. The units are thought to be in chains and not in links)
- 1908 John W. Curo, LS 1428, Cass County Surveyor, working for Mckinley Township found both bearing trees plainly marked and placed a 4" x 4" x 36" stake for the corner. Survey Record Number 182 Book A, Pages 421-422. Entry on file in the Cass County Highway Department/Surveyor's Office.
- 1912 John W. Curo, LS 1428, Cass County Surveyor, in a continuation of the 1908 work, replaces his wood stake with an 8" x 8" x 36" cement monument. No additional reference ties were given and no measurements to adjacent section corner were given. Survey Record Number 182 Book A, Pages 421-422. Entry on file in the Cass County Highway Department/Surveyor's Office.
- 2014 Robert Kovanen, LS 16459 working for NWSE set the corner accepting the centerline of the roads as the best available evidence for the corner and noted that no excavation was made. He filed a Certificate of Location doc. no. A000610420, which is on file in the office of the Cass County Recorder.
- 2019 Lakes Area Surveying recovered the 1912 Curo 8" x 8" concrete monument with a rebar placed alongside it near the centerline intersection. The reference ties from the said 2014 Certificate of Location were also recovered, but the monument was gone. It is believed that subsequent to 2014, the concrete monument was recovered and a rebar was placed next to it for a magnetic reference and that the 2014 monument was removed. Lakes Area Surveying is rejecting the 2014 position and accepting the found concrete monument as the direction perpetuation of the original Quarter Corner. Reference ties were found or set as shown on the front of this certificate.

**Analysis of the recovered record data, field evidence and survey measurements, indicates that the monument established by Lakes Area Surveying in 2019 is the accepted location of this corner.**