



A000652799

OFFICE OF THE COUNTY RECORDER
CASS COUNTY, MINNESOTA
CERTIFIED, FILED, AND/OR
RECORDED ON

8/29/2019 10:58:41 AM

AS DOC #: A000652799

PAGES: 2

REC FEES: 0.00

KATHRYN M. NORBY
CASS COUNTY RECORDER

BY SF Dep TX#: 155990

Index No. J.O-1.0

I hereby certify that this document was prepared by me or under my direct supervision and that I am a duly Licensed Land Surveyor under the laws of the State of Minnesota

Paul Herkenhoff
PAUL HERKENHOFF

Date 7/29/19 License No. 45875

CERTIFICATE OF LOCATION OF GOVERNMENT CORNER

SOUTHWEST Corner of Section 7, Township 138, Range 32, 5TH P.M.

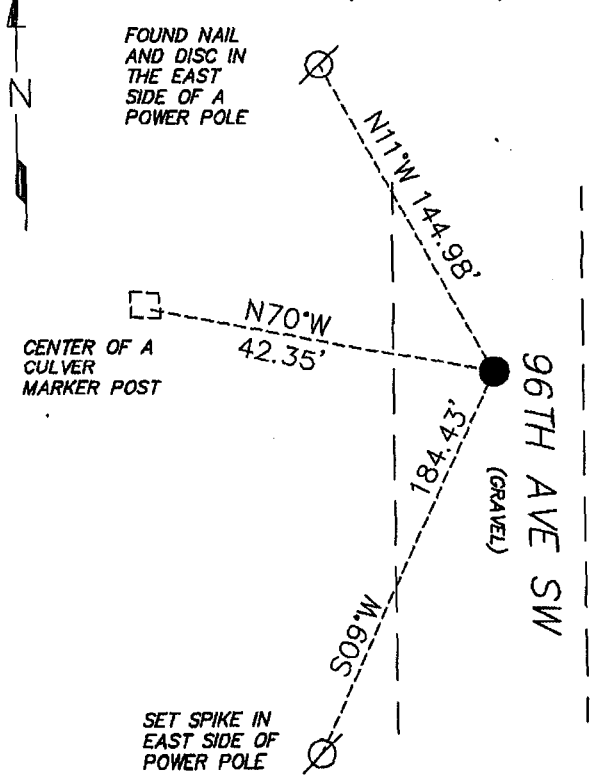
STATE OF MINNESOTA, County of CASS

At the location shown on the sketch:

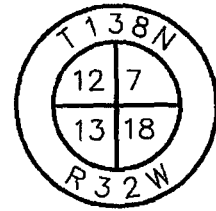
- On 5/15/19 found 1-1/2 INCH IRON PIPE
- left monument as found, lowered monument, removed monument (explain)
- On _____ placed an _____

SKETCH OF REFERENCE TIES (NOT TO SCALE)

ACCESSORY BEARING BASIS: BEARING



NOTE: CORNER FALLS ON CENTERLINE OF ROAD



N= 325723.518 E= 419740.348
 DATUM= CASS COUNTY SOUTH
NAD 83/96 ADJ. US SURVEY FT.

Statement of evidence relative to this corner is on back of page.





Index No. J.O-1.0

Statement of Evidence:

Southwest Corner of Section 7, Township 138, Range 32 West, 5th Principle Meridian, Cass County, Minnesota

Dec. 1860 J. Myers, General Land Office (GLO) Deputy Surveyor in the survey of the range line set a post for the original corner in the subdivision and noted the following accessories.

16" Black Pine	S66E	60 links
18" Black Pine	N77E	136 links
7" Tamarack	S82W	5 links
12" Black Pine	N75W	13 links

1944 John W Curo, LS 1428, Cass County Surveyor notes setting a 1 ¼" x 38" pipe in the center of a north/south road. The graphics show that the range line through sections 7 and 18 were set proportionally. With a distance of 5305.2 feet per mile. Filed in Curo Book B, Pages 3034, which is on file in the office of the Cass County Highway/Surveyor's Office.

2019 Lakes Area Surveying recovered a 1 ¼" pipe in the road with distances agreeing very closely to those noted by Curo in 1944. Accepting the found monument as the one set by Curo in 1944 and accepting the monument as the best available evidence of the corner. Reference ties were found or set as shown on the front of this certificate.

Analysis of the recovered record data, field evidence and survey measurements, indicates that the monument found by Lakes Area Surveying in 2019 is the accepted location of this corner.