



A000652796

OFFICE OF THE COUNTY RECORDER  
CASS COUNTY, MINNESOTA  
CERTIFIED, FILED, AND/OR  
RECORDED ON

8/29/2019 10:58:38 AM

AS DOC #: A000652796  
PAGES: 2  
REC FEES: 0.00

KATHRYN M. NORBY  
CASS COUNTY RECORDER  
BY SF Dep TX#: 155990

Index No. V.0-23.0

I hereby certify that this document was prepared by me or under my direct supervision and that I am a duly Licensed Land Surveyor under the laws of the State of Minnesota

*Paul Herkenhoff*  
PAUL HERKENHOFF

Date 4/17/19 License No. 45875

### CERTIFICATE OF LOCATION OF GOVERNMENT CORNER

NORTH QUARTER Corner of Section 36, Township 134, Range 32, 5TH P.M.

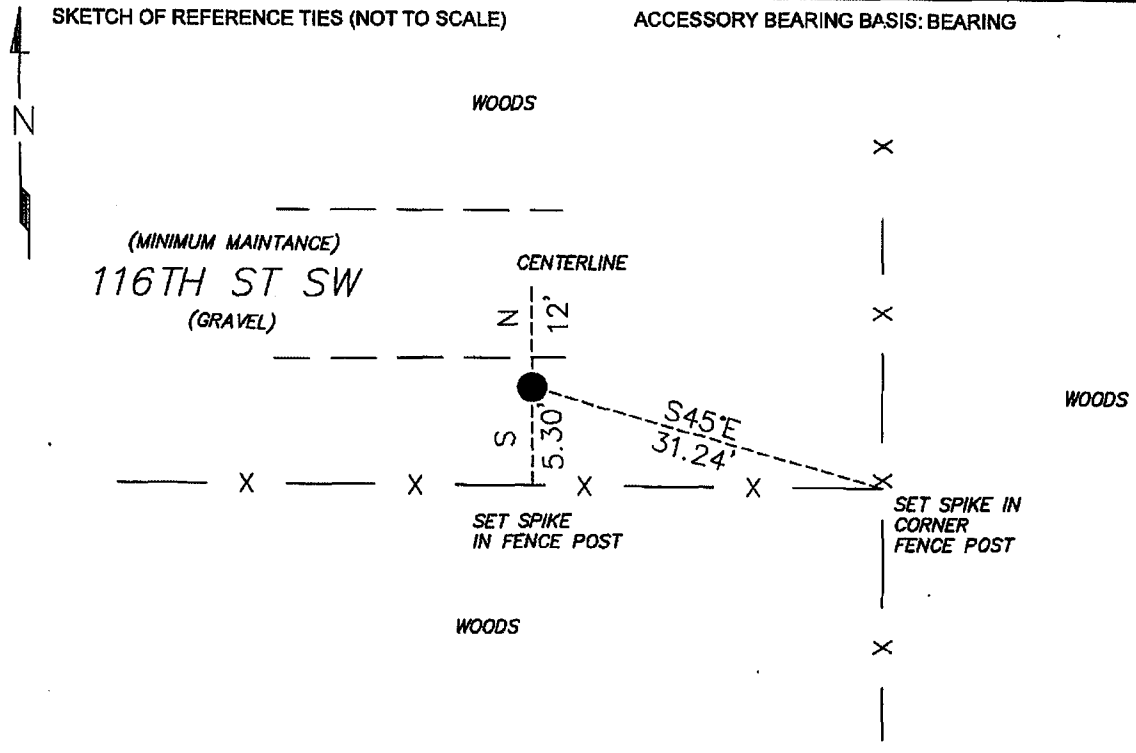
STATE OF MINNESOTA, County of CASS

At the location shown on the sketch:

On 4/17/19 found 1/2 INCH OPEN IRON PIPE

left monument as found,  lowered monument,  removed monument (explain)

On \_\_\_\_\_ placed an \_\_\_\_\_



N= 183013.28      E= 450157.35  
DATUM= CASS COUNTY SOUTH  
NAD 83/96 ADJ.      US SURVEY FT.

Statement of evidence relative to this corner is on back of page.

Page 1 of 2      A000652796





**Index No. V.0-23.0**

Statement of Evidence:

**North Quarter Corner of Section 36, Township 134, Range 32 West, 5th Principle Meridian, Cass County, Minnesota**

Oct 1870      W.P Allen, General Land Office (GLO) Deputy Surveyor in the survey of the subdivision of Township 134 North, Range 32 West set a post for the original corner and referenced it as follows:

4" Aspen	S78E	22 links
4" Aspen	N27W	19 links

2004      Westwood Professional Services used this corner for a survey in the Southwest Quarter of Section 36. Certificate of Survey on file in the office of the Cass County Highway/Surveyor office.

2007      Westwood Professional Services used this corner for a survey in the Southwest Quarter of Section 36. Certificate of Survey on file in the office of the Cass County Highway/Surveyor office.

2019      Lakes Area Surveying searched the area for all previous evidence, finding a 1/2 inch open iron pipe at the corner. This corner is the same corner recovered by Westwood Professional Services. This corner position fits a lost posit on between the northeast and northwest corner of Section 36.

**Analysis of the recovered record data, field evidence and survey measurements, indicates that the monument found by Lakes Area Surveying in 2019 is the accepted location of this corner.**