



A000652794

OFFICE OF THE COUNTY RECORDER
CASS COUNTY, MINNESOTA
CERTIFIED, FILED, AND/OR
RECORDED ON

8/29/2019 10:58:36 AM

AS DOC #: A000652794
PAGES: 2
REC FEES: 0.00

KATHRYN M. NORBY
CASS COUNTY RECORDER
BY SF _____ Dep TX#: 155990

Index No. T.O-21.0

I hereby certify that this document was prepared by me or under my direct supervision and that I am a duly Licensed Land Surveyor under the laws of the State of Minnesota

Paul Herkenhoff

PAUL HERKENHOFF

Date 4/17/19 License No. 45875

CERTIFICATE OF LOCATION OF GOVERNMENT CORNER

EAST QUARTER Corner of Section 26, Township 134, Range 32, 5TH P.M.

STATE OF MINNESOTA, County of CASS

At the location shown on the sketch:

On 4/17/19 found 1 INCH SQUARE BOLT BENT
DATE

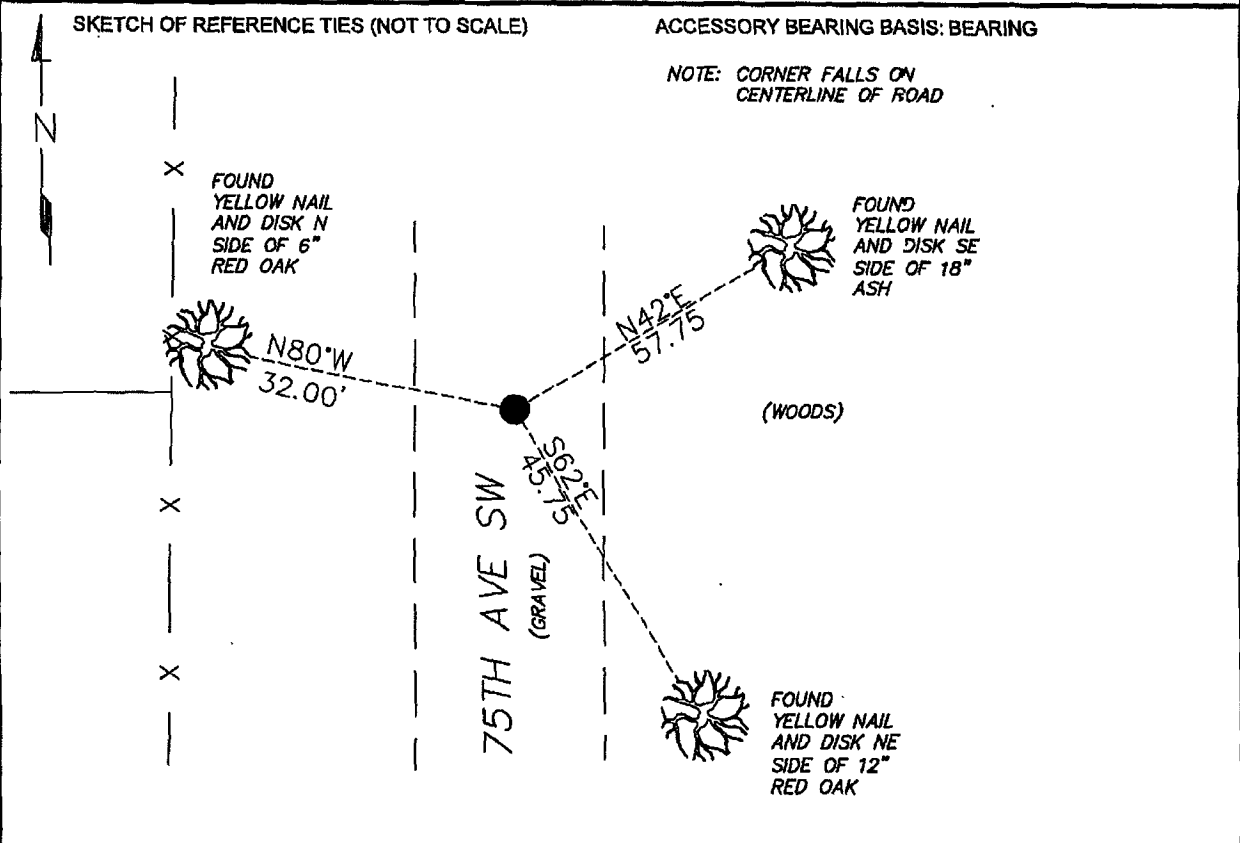
left monument as found, lowered monument, removed monument (explain)

On 4/17/19 placed an 1/2 INCH BY 14 INCH IRON PIPE IN SAME
DATE POSITION AS BOLT

SKETCH OF REFERENCE TIES (NOT TO SCALE)

ACCESSORY BEARING BASIS: BEARING

NOTE: CORNER FALLS ON CENTERLINE OF ROAD



N= 185671.39 E= 447461.15
DATUM= CASS COUNTY SOUTH
NAD 83/96 ADJ. US SURVEY FT.

Statement of evidence relative to this corner is on back of page.

Page 1 of 2 A000652794





Index No. T.0-21.0

Statement of Evidence:

East Quarter Corner of Section 26, Township 134, Range 32 West, 5th Principle Meridian, Cass County, Minnesota

Oct 1870 W.P Allen, General Land Office (GLO) Deputy Surveyor in the survey of the subdivision of Township 134 North, Range 32 West set a post for the original corner and referenced it as follows:

8" Linden	S49E	13 links
14" Oak	S22W	19 links

1998 and 1999 Ronald Engelmeyer, LS 13334 found and used this corner for a survey in the Northeast Quarter of Section 26. Certificate of Survey on file in the office of the Cass County Highway/Surveyor's Office.

2019 Lakes Area Surveying searched the area for all previous evidence, finding a 1 inch square bolt in place. Monument location fits centerline of a township road and a fence line heading west from the corner. Distance to the Northeast Corner of Section 26 measures 2673.13 feet and distance to the Southeast Corner of Section 26 measures 2670.08.

Analysis of the recovered record data, field evidence and survey measurements, indicates that the monument found by Lakes Area Surveying in 2019 is the accepted location of this corner.