



A000651793

OFFICE OF THE COUNTY RECORDER
CASS COUNTY, MINNESOTA
CERTIFIED, FILED, AND/OR
RECORDED ON

7/25/2019 12:40:36 PM

AS DOC #: A000651793

PAGES: 2

REC FEES: 0.00

KATHRYN M. NORBY
CASS COUNTY RECORDER

BY SF Dep TX#: 155173

Twp 144 Rge 25 Index No. V.0-19.0

CERTIFICATE OF LOCATION OF GOVERNMENT CORNER

North Quarter corner of Section 35, Township 144 N., Range 25 W., 5th P.M.
State of Minnesota, County of Cass

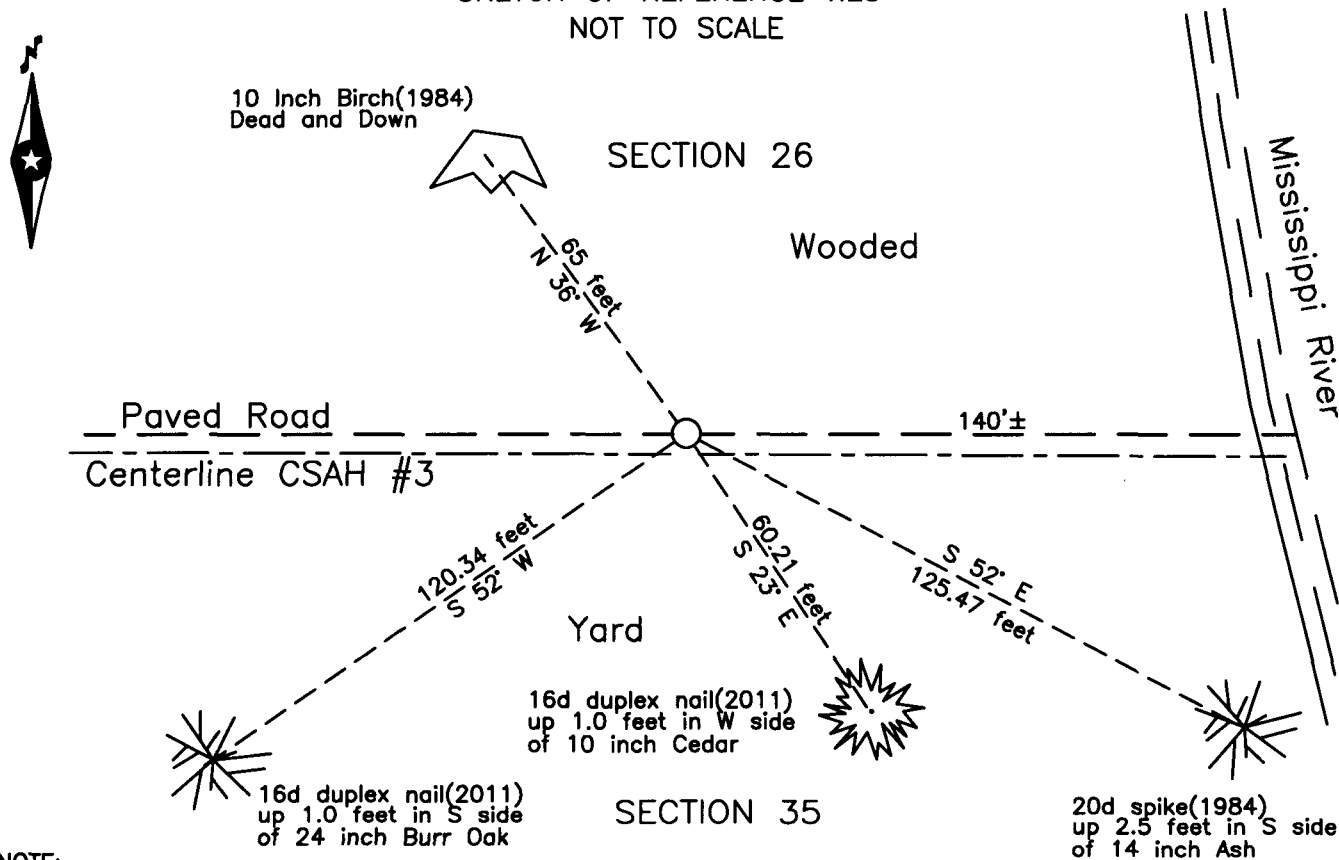
At the corner location shown on the sketch:

On 23 July 2011 found a USFS brass cap monument, down 0.7 foot, on centerline
of CSAH #3, 199 feet± west of Mississippi River bridge.

left monument as found lowered monument removed monument (explain)

On 18 July 2019 found a 1.5 inch magnetic concrete nail, placed over found
monument in 2011, 0.5 foot north of the centerline of CSAH #3.

SKETCH OF REFERENCE TIES
NOT TO SCALE



NOTE:
All bearings are true

Statement of evidence relative to this corner location is on the back of this page.

I hereby certify that this survey, plan or report was prepared by me or under my direct supervision and that I am a duly Licensed Land Surveyor under the laws of the State of Minnesota.

Terry L. Freeman, Cass County Surveyor
Date 7/24/19 MN License No. 21367

Statement of Evidence**North Quarter corner of Section 35, Township 144 North, Range 25 West, 5th Principal Meridian.**

- Dec. 1983 J.R. Worcester, Cass County Highway Department(CCHD), S.P. 11-603-06, on file in the CCHD, plan indicates subject corner assumed at Station 418+33.
- May 1985 J. Parker, LS 9235, under contract with the United States Forest Service (USFS), set a 2.5 inch diameter by 24 inch iron pipe with a stamped 3 inch brass cap in the obliterated position, 0.3 foot below the road surface, on centerline of CSAH #3 at feature call distance from the Mississippi River. He recorded a Certificate of Location of Government Corner in the Cass County Recorders Office(CCRO) on May 15, 1985 as **Document Number 281979**. The document indicates the corner was witnessed as follows:
 10" Birch N 36° W 64.46 feet 12" Ash S 52° E 125.47 feet
- July 2011 B. Hippen, technician, records of the Cass County Highway Department, Survey Office(CCHD/SO), prior to reconstruction of CSAH #3, found the USFS brass cap monument, down 0.7 foot, 199 feet, more or less, west of the west end of the Mississippi River bridge, on centerline of CSAH #3 and added witnesses as follows:
 24" B. Oak S 52° W 120.34 feet 10" Cedar S 23° E 60.21 feet
- Aug. 2011 B. Hippen, technician, records of the CCHD/SO, set a magnetic concrete nail from witnesses, 0.5 foot north of the new centerline of CSAH #3.
- July 2019 B. Hippen, technician, records of the CCHD/SO, found a magnetic concrete nail, 05. foot north of the centerline of CSAH #3 and 140 feet, more or less, west of the Mississippi River bank, the 1985 and 2011 witnesses.

The recovered and established witnesses for this corner position are shown on the face of this document.

Analysis of the recovered record data, field evidence and survey measurements, indicates that the position recovered in 2011 by the CCHD/SO, is the accepted location of this corner.

County Coordinates (Cass County North)

Northing 263816.71

Easting 602178.95