



A000651783

OFFICE OF THE COUNTY RECORDER  
CASS COUNTY, MINNESOTA  
CERTIFIED, FILED, AND/OR  
RECORDED ON

7/25/2019 12:40:26 PM

AS DOC #: A000651783

PAGES: 2

REC FEES: 0.00

KATHRYN M. NORBY  
CASS COUNTY RECORDER

BY SF \_\_\_\_\_ Dep TX#: 155173

Page 1 of 2 A000651783

Twp 144 Rge 26 Index No. R.0-25.0

### CERTIFICATE OF LOCATION OF GOVERNMENT CORNER

Northeast corner of Section 25, Township 144 N., Range 26 W., 5th P.M.

State of Minnesota, County of Cass

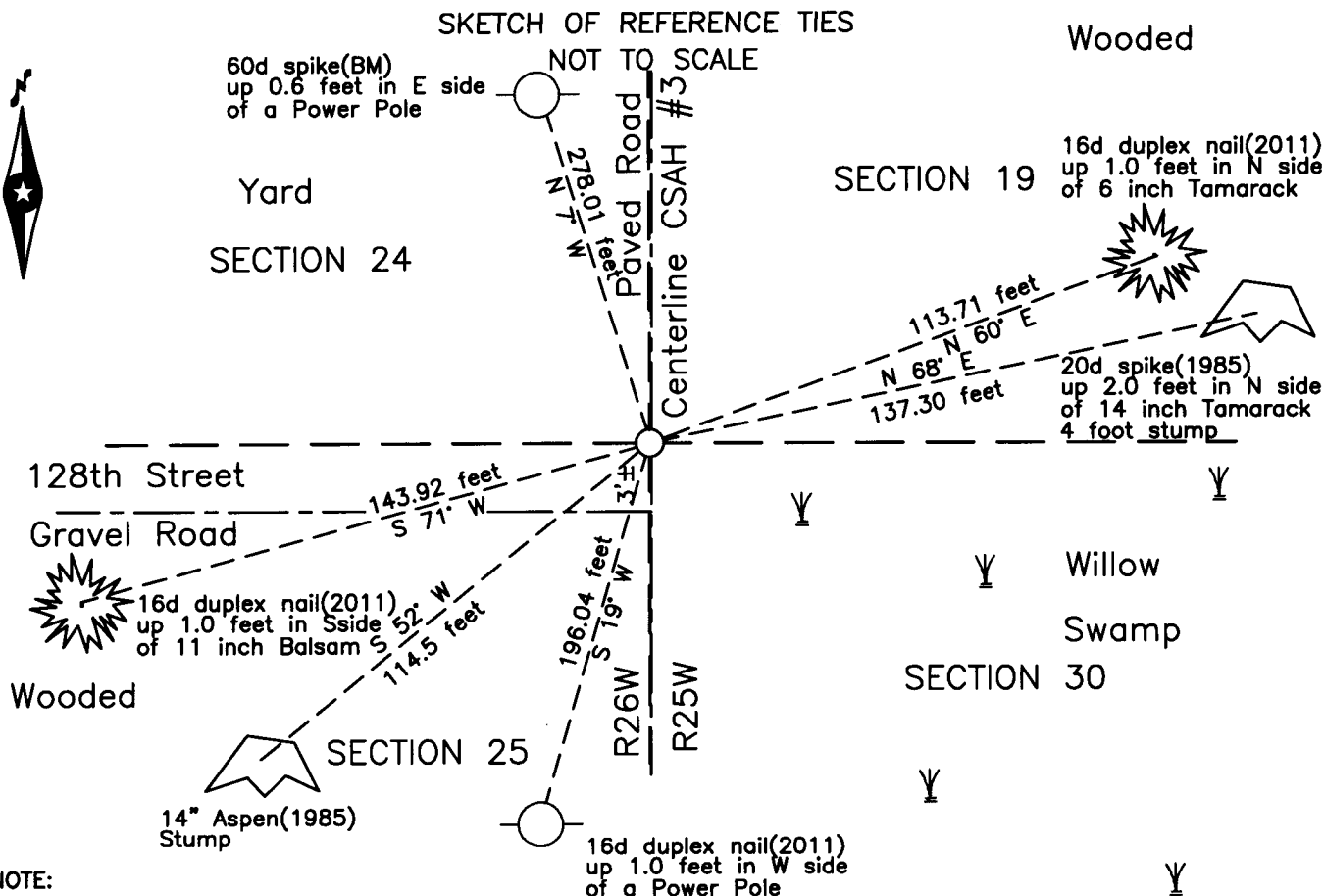
At the corner location shown on the sketch:

On 18 July 2019 found a 1.5 inch magnetic concrete nail, flush, on centerline of  
CSAH #3, 3 feet± north of centerline of 128th Street.

left monument as found     lowered monument     removed monument (explain)

On \_\_\_\_\_ placed \_\_\_\_\_

#### SKETCH OF REFERENCE TIES



NOTE:  
All bearings are true

Statement of evidence relative to this corner location is on the back of this page.

I hereby certify that this survey, plan or report was prepared by me or under my direct supervision and that I am a duly Licensed Land Surveyor under the laws of the State of Minnesota.

Terry L. Freeman, Cass County Surveyor  
Date 7/24/19 MN License No. 21367

Statement of Evidence

**Northeast corner of Section 25, Township 144 North, Range 26 West, 5th Principal Meridian.**

Feb. 1903 O.C. Gilbert, deputy under J.M. Canfield, County Surveyor, plat of Zuzu & Bear River Road, and Auditors Road Calendar A, pages 3, 8, & 44 and Auditors Road Calendar B, page 30 all on file at the Cass County Highway Department, Surveyors Office (CCHD/SO) indicates this corner by symbol and shows dimensions north and south to other corners.

1983 Cass County Highway Department (CCHD), S.P. 11-603-05, on file in the CCHD, plan indicates subject corner at P.I. Station 127+49.7 and witnesses as follows:

10" Pop.	SSW	171.2 feet	6" Balm of Gilead	NW	163.8 feet
10" Pop.	SW	114.8 feet			

May 1985 J. Parker, LS 9235, under contract with the United States Forest Service (USFS), set a 5/8 inch diameter by 36 inch aluminum rod with a stamped 3inch aluminum cap in the obliterated position, 0.5 foot below the road surface, on centerline of CSAH #3 and centerline of a Township road to the west. He recorded a Certificate of Location of Government Corner in the Cass County Recorders Office (CCRO) on May 15, 1985 as **Document Number 281954**. The document indicates the corner was witnessed as follows:

12" Tamarack	N 68° E	137.30 feet	8" Elm	S 30° E	118.36 feet
10" Aspen	S 52° W	114.55 feet	8" Aspen	N 76° W	161.71 feet

Feb. 1999 B. Hippen and C. Loe, technicians, records of the CCHD/SO, set a concrete nail from the 1985 witnesses, on centerline of CSAH #3.

July 2011 B. Hippen, technician, records of the CCHD/SO, prior to reconstruction of CSAH # 003, found the concrete nail set in 1999, 3 feet, more or less, north of centerline of 128<sup>th</sup> Street and on centerline of CSAH #3 and added witnesses as follows:

6" Tamarack	N 60° E	113.71 feet	Power Pole	N 7° W	278.01 feet
11" Balsam	S 71° W	143.92 feet	Power Pole	S 19° W	196.04 feet

Aug. 2011 B. Hippen, technician, records of the CCHD/SO, set a magnetic concrete nail from witnesses 0.5 foot east of the new centerline of CSAH #3.

July 2019 B. Hippen, technician, records of the CCHD/SO, found a magnetic concrete nail on the centerline of CSAH #3 and the 1985 and 2011 witnesses.

The recovered and established witnesses for this corner position are shown on the face of this document.

**Analysis of the recovered record data, field evidence and survey measurements, indicates that the position recovered in 2011 by the CCHD/SO, is the accepted location of this corner.**

**County Coordinates (Cass County North)**  
**Northing 269109.32**  
**Easting 578177.04**