



A000651782

OFFICE OF THE COUNTY RECORDER
CASS COUNTY, MINNESOTA
CERTIFIED, FILED, AND/OR
RECORDED ON

7/25/2019 12:40:25 PM

AS DOC #: A000651782

PAGES: 2

REC FEES: 0.00

KATHRYN M. NORBY
CASS COUNTY RECORDER

BY SF _____ Dep TX#: 155173

Page 1 of 2 A000651782

Twp 144 Rge 26 Index No. P.0-25.0

CERTIFICATE OF LOCATION OF GOVERNMENT CORNER

East Quarter corner of Section 24, Township 144 N., Range 26 W., 5th P.M.
State of Minnesota, County of Cass

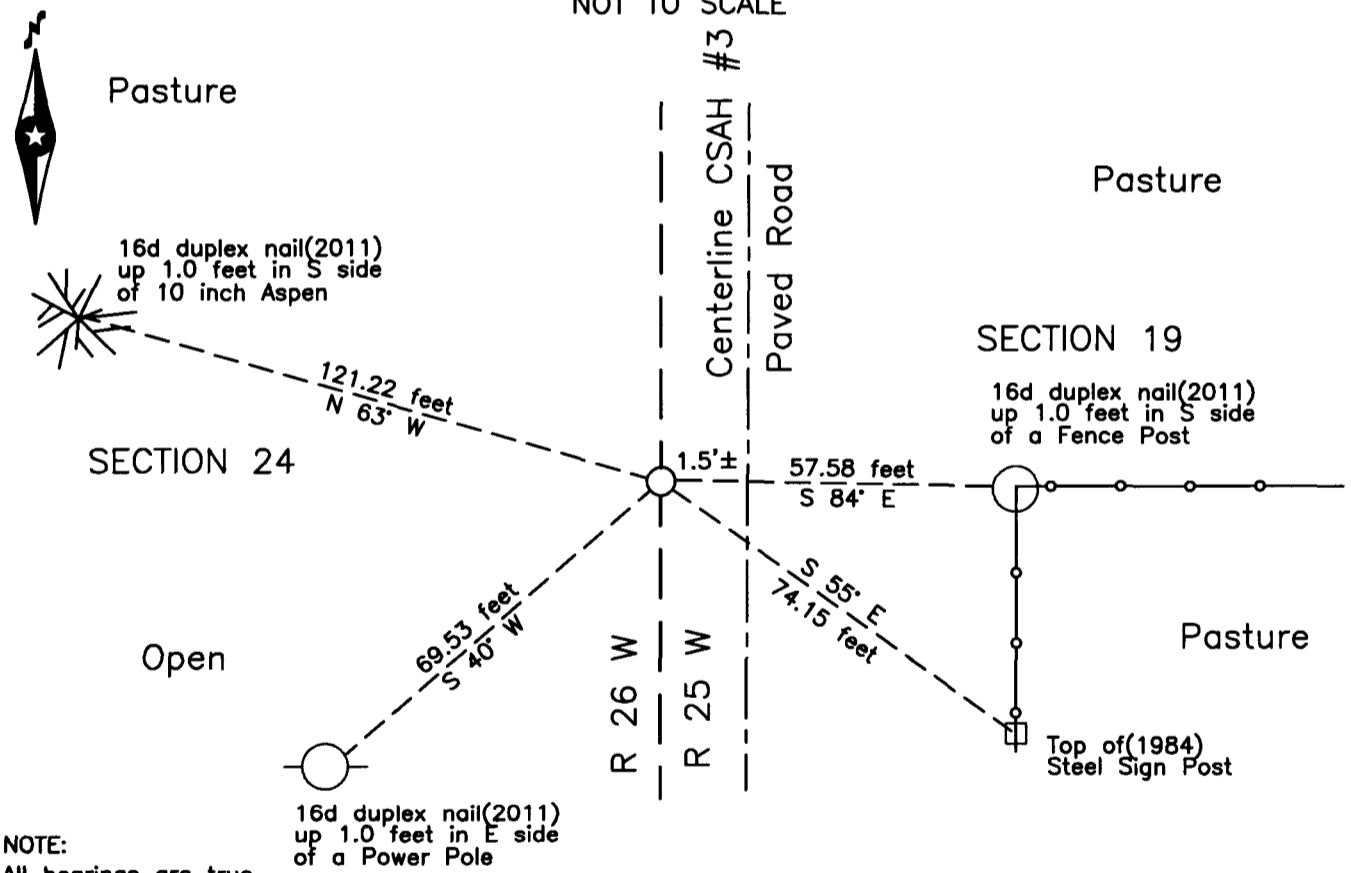
At the corner location shown on the sketch:

On 13 July 2011 found an Aluminum rod, down 1.4 feet, top 0.5 foot bent,
1.5 feet west of centerline of CSAH #3.

left monument as found lowered monument removed monument (explain)

On 18 July 2019 found a 1.5 inch magnetic concrete nail placed over found rod
1.5 foot± west of the new centerline of CSAH #3.

SKETCH OF REFERENCE TIES
NOT TO SCALE



Statement of evidence relative to this corner location is on the back of this page.

I hereby certify that this survey, plan or report was prepared by me or under my direct supervision and that I am a duly Licensed Land Surveyor under the laws of the State of Minnesota.

Terry L. Freeman, Cass County Surveyor
Date 7/24/19 MN License No. 21367

Statement of Evidence**East Quarter corner of Section 24, Township 144 North, Range 26 West, 5th Principal Meridian.**

- Feb. 1903 O.C. Gilbert, deputy under J.M. Canfield, County Surveyor, plat of Zuzu & Bear River Road, and Auditors Road Auditors Road Calendar A, pages 3, 8, & 44 and Auditors Road Calendar B, page 30 all on file at the Cass County Highway Department, Surveyors Office(CCHD/SO) indicates this corner by symbol and shows dimensions north and south to other corners.
- 1983 Cass County Highway Department (CCHD), plan S.P. 11-603-05, on file in the CCHD, indicates subject corner to be assumed at centerline Station 101+07.5.
- May 1985 J. Parker, LS 9235, under contract with the United States Forest Service (USFS), set a 5/8 inch diameter by 36 inch aluminum rod with a stamped 3 inch aluminum cap in the obliterated position, 0.3 foot below the road surface, on centerline of CSAH #3 and fence lines to the east and west. He recorded a Certificate of Location of Government Corner in the Cass County Recorders Office (CCRO) on May 15, 1985 as **Document Number 281948**. The document indicates the corner was witnessed as follows:
- | | | | | | |
|---------|---------|------------|------------|---------|------------|
| P. Pole | S 40° W | 68.80 feet | Steel Post | S 55° E | 74.15 feet |
|---------|---------|------------|------------|---------|------------|
- July 1999 B. Hippen and C. Loe, technicians, records of the CCHD/SO, found a concrete nail 1.5 feet west of centerline of CSAH #3 which fit the 1985 steel post witnesses and added the following:
- | | | | | | |
|------------|---------|-------------|------------|---------|------------|
| 9" Aspen | N 68° W | 127.42 feet | Power Pole | S 40° W | 69.39 feet |
| Fence Post | S 84° E | 57.34 feet | | | |
- July 2011 B. Hippen, technician, records of the CCHD/SO, prior to resurfacing of CSAH #3, excavated a 2 foot east-west by 1.5 foot north-south area based on recovered witnesses. Found the aluminum rod monument, down 1.4 feet, top 0.5 foot is bent, 1.5 feet west of centerline of CSAH #3 and added witnesses as follows:
- | | | | | | |
|------------|---------|-------------------|------------|---------|-------------------|
| 10" Aspen | N 63° W | 121.22 feet | Power Pole | S 40° W | 69.53 feet (1999) |
| Fence Post | S 84° E | 57.58 feet (1999) | | | |
- Aug. 2011 B. Hippen, technician, records of the CCHD/SO, set a magnetic concrete nail from witnesses 1 foot West of the new bituminous centerline.
- July 2019 B. Hippen, technician, records of the CCHD/SO, found a magnetic concrete nail 1.5 feet, more or less, west of centerline of CSAH #3 and the 2011 witnesses.

The recovered and established witnesses for this corner position are shown on the face of this document.

Analysis of the recovered record data, field evidence and survey measurements, indicates that the position recovered in 2011 by the CCHD/SO, is the accepted location of this corner.

County Coordinates (Cass County North)

Northing 271742.33

Easting 578139.39