



A000651780

OFFICE OF THE COUNTY RECORDER
 CASS COUNTY, MINNESOTA
 CERTIFIED, FILED, AND/OR
 RECORDED ON

7/25/2019 12:40:23 PM

AS DOC #: A000651780

PAGES: 2

REC FEES: 0.00

KATHRYN M. NORBY
 CASS COUNTY RECORDER

BY SF _____ Dep TX#: 155173

Twp 144 Rge 26 Index No. L.0-25.0

CERTIFICATE OF LOCATION OF GOVERNMENT CORNER

East Quarter corner of Section 13, Township 144 N., Range 26 W., 5th P.M.

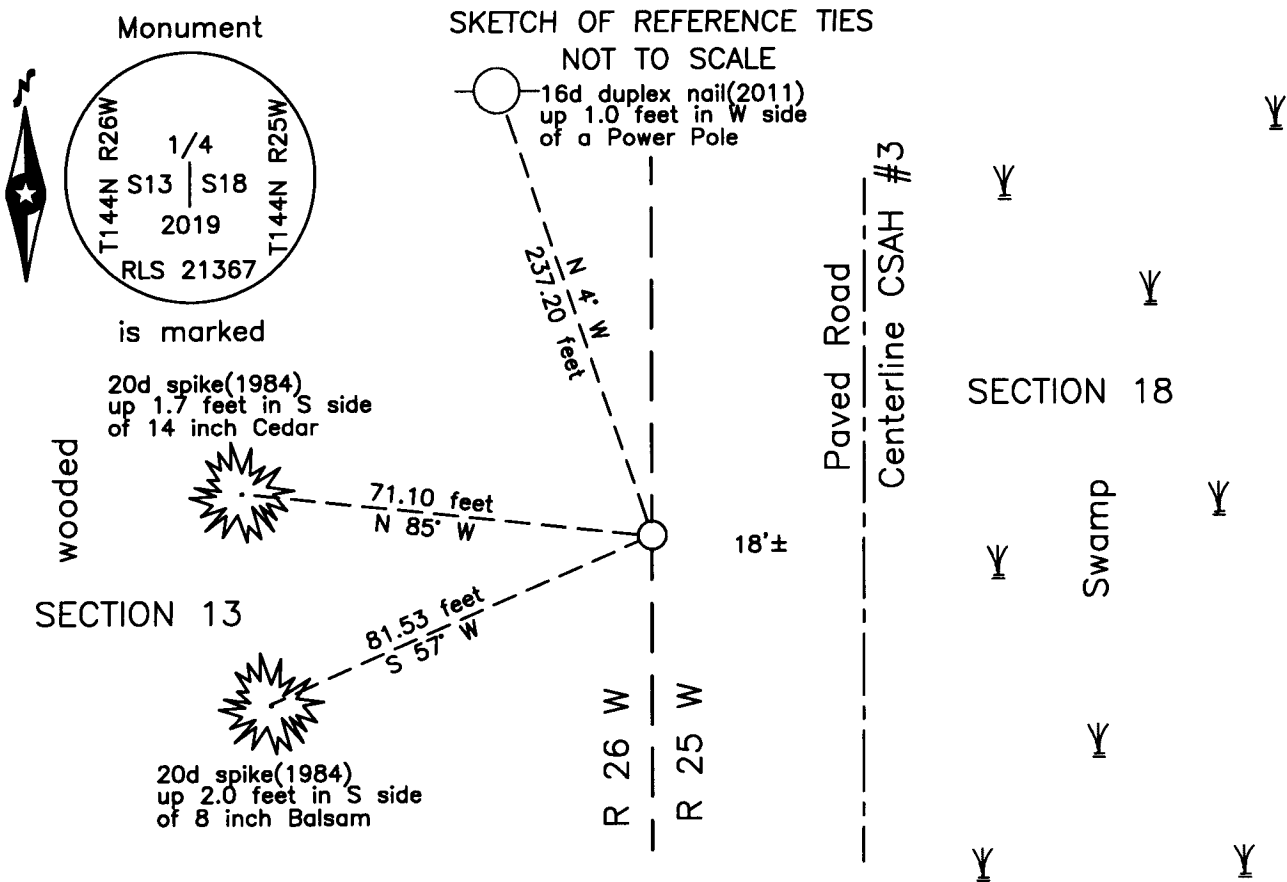
State of Minnesota, County of Cass

At the corner location shown on the sketch:

On 18 July 2019 found a concrete nail set form witnesses in 2011, 18 feet±
west of centerline of CSAH #3.

left monument as found lowered monument removed monument (explain)

On 23 July 2019 placed a 1 inch by 32 inch aluminum tube with aluminum cap,
down 0.5 foot, 18 feet± west of centerline of CSAH #3.



NOTE:
 All bearings are true

Statement of evidence relative to this corner location is on the back of this page.

I hereby certify that this survey, plan or report was prepared by me or under my direct supervision and that I am a duly Licensed Land Surveyor under the laws of the State of Minnesota.

Terry L. Freeman
 Terry L. Freeman, Cass County Surveyor
 Date 7/24/19 MN License No. 21367

Statement of Evidence**East Quarter corner of Section 13, Township 144 North, Range 26 West, 5th Principal Meridian.**

- 1983 Cass County Highway Department(CCHD), S.P. 11-603-05, on file in the CCHD, plan indicates subject corner assumed at Station 47+74.1.
- May 1985 J. Parker, LS 9235, under contract with the United States Forest Service (USFS), set a 5/8 inch diameter by 36 inch aluminum rod with a stamped 3 inch aluminum cap in the lost position, 0.3 foot below the road surface, on centerline of CSAH #3. He recorded a Certificate of Location of Government Corner in the Cass County Recorders Office(CCRO) on May 3, 1985 as **Document Number 281714**. The document indicates the corner was witnessed as follows:
 12" Cedar N 85° W 71.10 feet 6" Balsam S 57° W 81.53 feet
- Feb. 1999 B. Hippen and C .Loe, technicians, records of the Cass County Highway Department, Surveyors Office (CCHD/SO), set a concrete nail from the 1985 witnesses, 18 feet, more or less, west of centerline of CSAH #3.
- July 2011 B. Hippen, technician, records of the CCHD/SO, prior to reconstruction of CSAH #3, found the concrete nail set in 1999, on west edge of bituminous, 18 feet, more or less, west of centerline and added witness as follows:
 Power Pole N 4° W 237.20 feet
- Aug. 2011 B. Hippen, technician, records of the CCHD/SO, replace concrete nail with a magnetic concrete nail, 1 foot, more or less, west of edge new bituminous.
- July 2019 B. Hippen, technician, records of the CCHD/SO, found a magnetic concrete nail and replaced it with a 1 inch by 32 inch aluminum tube with aluminum cap, down 0.05 foot, 18 feet, more or less, west of centerline of CSAH #3 and recovered the 1985 and 2011 witnesses.

The recovered and established witnesses for this corner position are shown on the face of this document.

Analysis of the recovered record data, field evidence and survey measurements, indicates that the position recovered in 2011 by the CCHD/SO, is the accepted location of this corner.

County Coordinates (Cass County North)

Northing 277084.34

Easting 578158.96