



A000650928

OFFICE OF THE COUNTY RECORDER  
CASS COUNTY, MINNESOTA  
CERTIFIED, FILED, AND/OR  
RECORDED ON

6/27/2019 10:32:52 AM

AS DOC #: A000650928

PAGES: 2

REC FEES: 0.00

KATHRYN M. NORBY  
CASS COUNTY RECORDER

BY NG Dep TX#: 154500

Page 1 of 2 A000650928

Twp 139 Rge 26 Index No. U.2-21.0

### CERTIFICATE OF LOCATION OF GOVERNMENT CORNER

Meander corner #7 of Section 26, Township 139 N., Range 26 W., 5th P.M.  
State of Minnesota, County of Cass

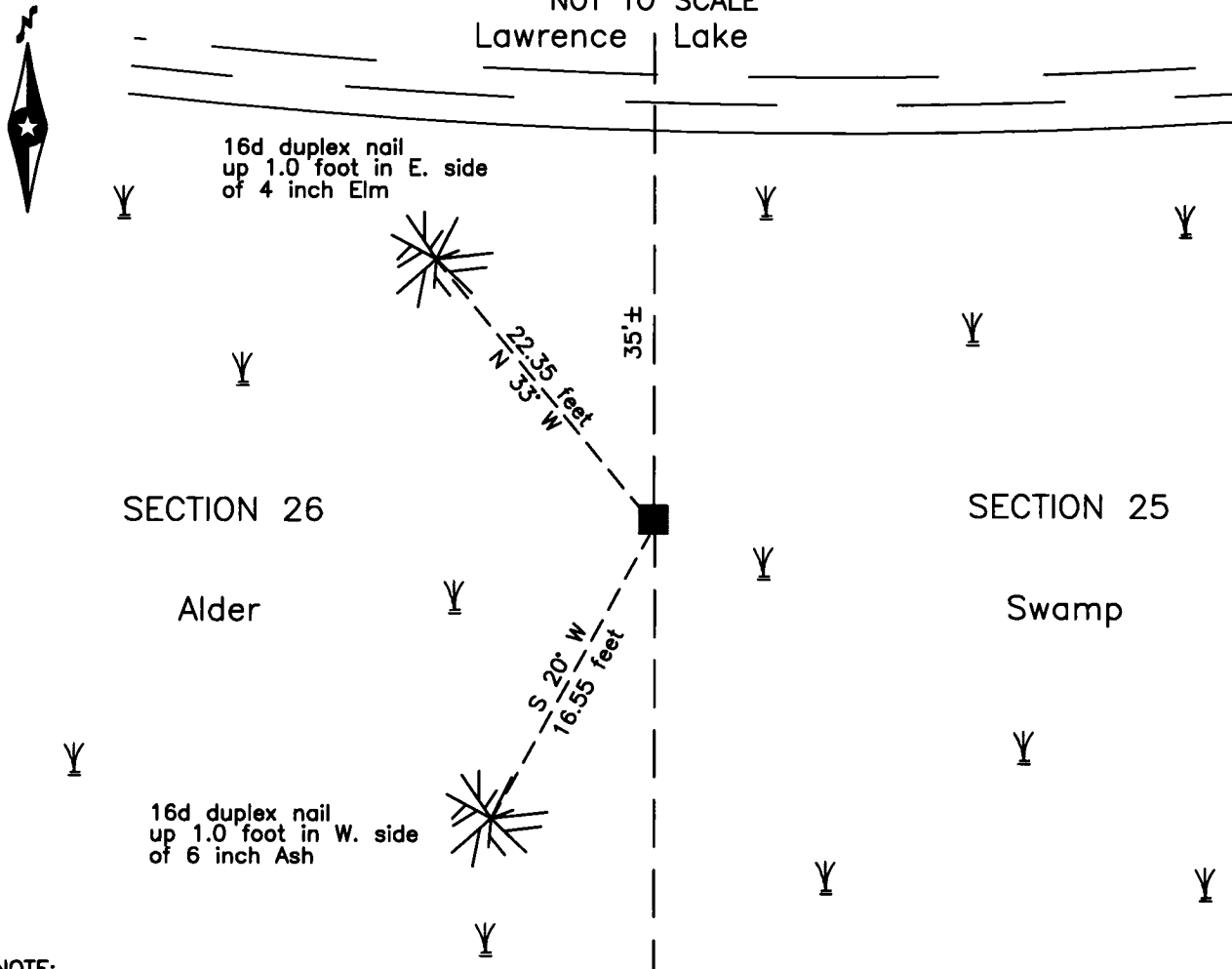
At the corner location shown on the sketch:

On 17 May 2019 found \_\_\_\_\_ a 4 inch square concrete post, up 1.1 feet,  
\_\_\_\_\_ 35 feet± south of Lawrence Lake.

left monument as found     lowered monument     removed monument (explain)

On \_\_\_\_\_ placed \_\_\_\_\_

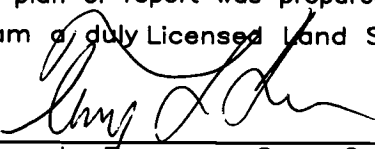
#### SKETCH OF REFERENCE TIES NOT TO SCALE



NOTE:  
All bearings are true

Statement of evidence relative to this corner location is on the back of this page.

I hereby certify that this survey, plan or report was prepared by me or under my direct supervision and that I am a duly Licensed Land Surveyor under the laws of the State of Minnesota.

  
Terry L. Freeman, Cass County Surveyor  
Date 6/26/19 MN License No. 21367

Statement of Evidence**Meander corner #7 Section 26, Township 139 North, Range 26 West, 5th Principal Meridian.**

Dec. 1863 Johnson and Thornton, General Land Office (GLO) Deputy Surveyors, notes of the subdivision of Township 139 North, Range 26 West, set a post for the original corner and referenced as follows:  
10" Elm            S 62° E    45 links (29.70 feet)            4" Black Ash    S 45° W            24 links (15.84 feet)  
Said records are on file at the Minnesota Historical Society, St. Paul, Minnesota, copies are filed with the Cass County Highway Department, Surveyor's Office (CCHD/SO).

Oct. 1916 E.B. Horst, LS 376, Survey Record #283, Book B, page 191, on file in the CCHD/SO, lists the GLO witnesses and states "We find some Elm stumps but none are bearing trees."

May 1927 J.P. Larsen, LS 143, Plat of TINGDALE BROS.' ROOSEVELT TRAILS, on file in the Cass County Recorders Office(CCRO), as Document Number 87084, indicates Concrete Mon. MC at the subject corner.

Dec. 1931 H.D. Keath, LS 1601, Plat of Tingdale Bro'. Lake Lawrance Point, on file in the CCRO as Document Number 95508, indicates Concrete M. at the subject corner.

May 2019 B. Hippen, technician, records of the CCHD/SO, found a 4 inch square concrete post, up 1.1 feet, 35 feet, more or less, south of Lake shore, in a Tag Alder swamp and the following witnesses:  
4" Elm            N 33° W            22.35 feet            6" Ash            S 20° W            16.55 feet  
The recovered and established witnesses for this corner position are shown on the face of this document.

**Analysis of the recovered record data, field evidence and survey measurements, indicates that the monument recovered in 2019 by the CCHD/SO, is the accepted location of this corner.**

**County Coordinates (Cass County North)****Northing 106363.89****Easting 573538.89**