



A000646245

OFFICE OF THE COUNTY RECORDER
 CASS COUNTY, MINNESOTA
 CERTIFIED, FILED, AND/OR
 RECORDED ON

11/29/2018 10:30:04 AM

AS DOC #: A000646245

PAGES: 3

REC FEES: 0.00

KATHRYN M. NORBY
 CASS COUNTY RECORDER

BY SF Dep TX#: 150651

Twp 142 Rge 31 Index No. R.0-13.0

CERTIFICATE OF LOCATION OF GOVERNMENT CORNER

Northeast corner of Section 28, Township 142 N., Range 31 W., 5th P.M.
 State of Minnesota, County of Cass

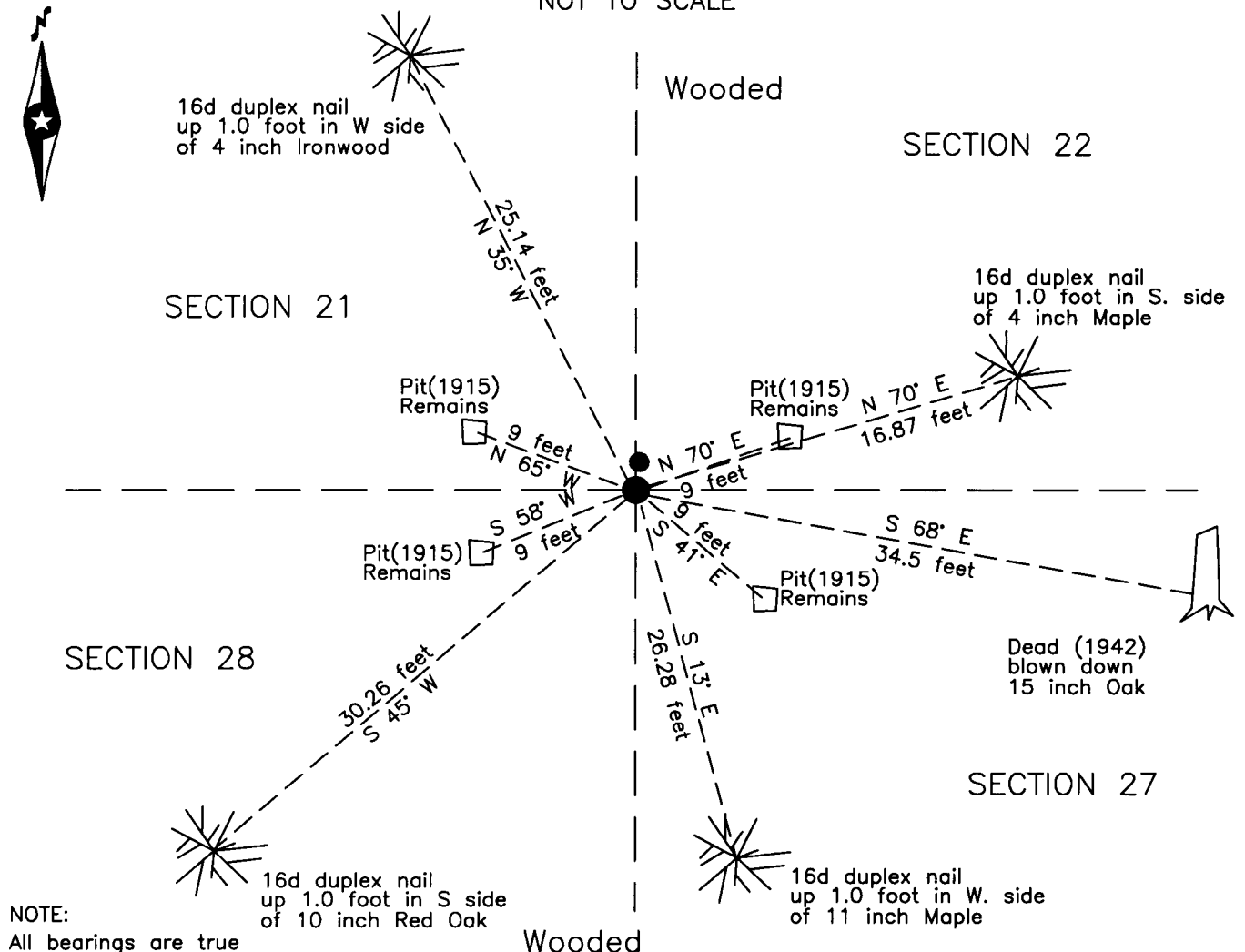
At the corner location shown on the sketch:

On 18 Aug 2018 found a 2.5 inch outside diameter iron pipe with plumber cap,
up 2.1 feet, GLO brass cap, north 0.45 foot.

left monument as found lowered monument removed monument (explain)

On _____ placed _____

SKETCH OF REFERENCE TIES
 NOT TO SCALE



Statement of evidence relative to this corner location is on the back of this page.

I hereby certify that this survey, plan or report was prepared by me or under my direct supervision and that I am a duly Licensed Land Surveyor under the laws of the State of Minnesota.

Terry L. Freeman, Cass County Surveyor
 Date 11/28/18 MN License No. 21367

**Index No. R.0-13.0**Statement of Evidence**Northeast corner Section 28, Township 142 North, Range 31 West, 5th Principal Meridian.**

- Aug. 1873 P.H. Conger, General Land Office (GLO) Deputy Surveyor, in the notes of the subdivision of Township 142 North, Range 31 West, set a post for the original corner and referenced it as follows:
 4" B. Oak N 43° E 39 links (25.74 feet) 20" W. Pine N 62° W 120 links (79.20 feet)
 3" Birch S 74° W 44 links (29.04 feet) 3" Birch S 80° E 11 links (7.26 feet)
 The above records are on file with the Minnesota Historical Society in St. Paul, Minnesota, copies are filed with the Cass County Highway Department, Surveyor's Office (CCHD/SO).
- June 1915 F.N. Molyneux, Survey Assistant, Curo Book 79, page 67, on file in the CCHD/SO, with Curo states "looked up witness trees set temporary stake for corner and run temporary line south to highway with compass."
- Aug. 1915 H.F. Baldwin, Deputy County Surveyor, Survey Record #476, Book C, page 512 to 513 and Curo Book 60, pages 14, 26, 27, 58 and 78, on file in the CCHD/SO, indicates 2 1/4" x 4' I.M. at corner, on page 58 states "Curo & Baldwin set I.M. at N.E. Cor sec 28-142-31 with Archie Lavigne as witness." Witnessed as follows:
 30"x30"x12" Pit NE 9 feet 30"x30"x12" Pit SW 9 feet
 30"x30"x12" Pit NW 9 feet 30"x30"x12" Pit SE 9 feet
- Aug. 1915 P.M. Scott, Curo Book 78, pages 28-30 and 47, on file in the CCHD/SO, indicates the corner is 47.45 feet north of the random line intersection, he is working with Curo, Horst and Baldwin.
- Oct. 1915 J.W. Curo, LS 1428, Curo's Contract #11, Survey of Section 28, on file in the Cass County Recorders Office(CCRO) indicates a known corner set from old bearing trees.
- Nov. 1915 E.B. Horst, LS 376, Curo Book 78, page 76, on file in the CCHD/SO, with H. Curo states "We go to cor of sec 21-22-27-28 and set a large back sight".
- April 1916 L.S. H., CCHD, State Rural Highway #80, Ditch shelf 5, Book 26, page 26, on file in the CCHD/SO, indicates corner is 425.0 feet north of centerline station 3492+25.3.
- June 1921 E. G. Harrington, General Land Office U. S. Cadastral Engineer, states Intersect a galvanized iron pipe, 2 1/2 inches diameter, set by County Surveyor for the corner. North and alongside of galvanized iron pipe, I set and iron post, 3 feet long 2 inches diameter, 26 inches in the ground, with brass cap. Referenced as follows:
 30" Pine stump(GLO) N 62° W 120 links (79.20 feet)
 8" Oak stump(GLO) N 43° E 39 links (25.74 feet)
 6" Black Oak N 13 3/4° W 97 links (64.02 feet) 6" Red Oak S 66 1/2° E 203 links (133.98 feet)
 The above records are on file with the Minnesota Historical Society, St. Paul, Minnesota, copies are filed with the CCHD/SO.
- Nov. 1922 E.B. Horst, LS 376, Plat of SUNRISE BEACH, on file in the CCRO, as Document #70907, description commences at an iron monument 5742.87 feet north of corner.
- April 1942 J.W. Curo, LS 1428, Cass County Surveyor, Survey Record #594, Book D, page 294 to 295, on file in the CCHD/SO, indicates corner and witnesses as follows:
 8" Red Oak N 55° W 26.30 feet 6" Red Oak N 24° E 26.90 feet
 6" Red Oak S 58° W 23.40 feet 11" Red Oak S 69° E 34.55 feet
- Nov. 1948 R.A. Dahms, CE 936, Plat of FIRST ADDITION EVERGREEN CEMETERY, on file in the CCRO, as Document #134638, indicates corner.
- June 1951 J.W. Curo, LS 1428, Curo Book 19A, image 50, on file in the CCHD/SO, indicates corner in survey for Jewell in Government Lot 1 of Section 27.
- Oct. 1951 J.W. Curo, LS 1428, Curo Book 294, pages 18 and 19, on file in the CCHD/SO, indicates corner SW, 62.8 feet in survey in Government Lot 1 of Section 27.
- Dec. 1964 D.M. Anderson, LS 3091, Plat of SECOND ADDITION TO EVERGREEN CEMETERY, on file in the CCRO, as Document #178055, description commences 1385 feet north of corner.
- July 1965 R.F. Schneider, LS 5740, Cass County Surveyor, Survey Record Book D, page 465, on file in the CCHD/SO, indicates a GLO Monument at the SE corner of Section 21.
- May 1969 R.F. Schneider, LS 5740, Certificate of Survey in Section 22, on file in the Walker office of Northern Engineering and Consulting (NECI) and the CCHD/SO, indicates an iron monument at the SW corner of Section 22.
- July 1990 D.S. Landecker, LS 17008, Certificate of Survey for Dement, on file in the Walker office of NE CI) and the CCHD/SO, indicates a monument found at the SW corner of Section 22.
- Sept. 1990 J.R. Worchester, Cass County Engineer, Project SAP 11-612-03, on file in the CCHD, indicates a monument at the subject corner.
- March 1993 W.E. Curo, LS 11395, Curo Book 332, page 53 and file #2280, on file in the CCHD/SO, indicates section corner in survey for Larry Day.



Index No. R.0-13.0

- Sept. 1996 T.L. Freeman, LS 21367, Certificate of Survey for Johnson, on file in the Walker office of NECI and the CCHD/SO, indicates found iron at the subject corner.
- Sept. 1997 T.L. Freeman, LS 21367, Certificate of Survey for Hagen, on file in the Walker office of NECI and the CCHD/SO, indicates found iron at the subject corner.
- March 2002 T.M. Miller, LS 23046, Certificate of Survey for Burmayer, copy on file in the CCHD/SO, indicates found 2.5 inch diameter capped iron pipe with 3 inch diameter GLO monument on north side at the subject corner.
- Dec. 2004 T.L. Freeman, LS 21367, Certificate of Survey for Day, on file in the Walker office of NECI and the CCHD/SO, indicates found iron at the subject corner.
- June 2009 T.L. Freeman, LS 21367, Certificate of Survey for Rodekuhr, on file in the Walker office of NECI and the CCHD/SO, indicates U.S. GLO monument found at the subject corner.
- June 2011 T.L. Freeman, LS 21367, Certificate of Survey for Fagerman, on file in the Walker office of NECI and the CCHD/SO, indicates a calculated position for the subject corner.
- Aug. 2018 B. Hippen, technician, records of the CCHD/SO, found 2.5 inch outside diameter iron pipe, with plumbers cap, up 2.1 feet, GLO brass cap, up 0.8 foot, 0.45 foot, north and witnessed as follows:

Pit(1915)	N 70° E	9 feet	Pit(1915)	S 59° W	9 feet
Pit(1915)	N 65° W	9 feet	Pit(1915)	S 41° E	9 feet
15" Oak down(1942)	S 68° E	34.5 feet	11" Maple	S 13° E	26.28 feet
4" Ironwood	N 35° W	25.14 feet	10" R. Oak	S 45° W	30.26 feet
4" Maple	N 70° E	16.87 feet			
- Nov. 2018 T.L. Freeman, LS 21367, Certificate of Survey for Plattner, on file in the Walker office of NECI and the CCHD/SO, indicates found iron at the subject corner.

The monument, together with the recovered and established references for the position are shown on the face of this document.

Analysis of the recovered record data, field evidence and survey measurements, indicates that the monument recovered by CCHD/SO in 2018 is the correct perpetuation of this corner.

County Coordinates (Cass County North)

Northing 206164.51

Easting 405247.79