



A000645408

OFFICE OF THE COUNTY RECORDER
CASS COUNTY, MINNESOTA
CERTIFIED, FILED, AND/OR
RECORDED ON

10/25/2018 10:38:58 AM

AS DOC #: A000645408

PAGES: 2

REC FEES: 0.00

KATHRYN M. NORBY
CASS COUNTY RECORDER

BY SF Dep TX#: 149987

Twp 143 Rge 31 Index No. A.0-07.0

CERTIFICATE OF LOCATION OF GOVERNMENT CORNER

North Quarter corner of Section 5, Township 143 N., Range 31 W., 5th P.M.
State of Minnesota, County of Cass

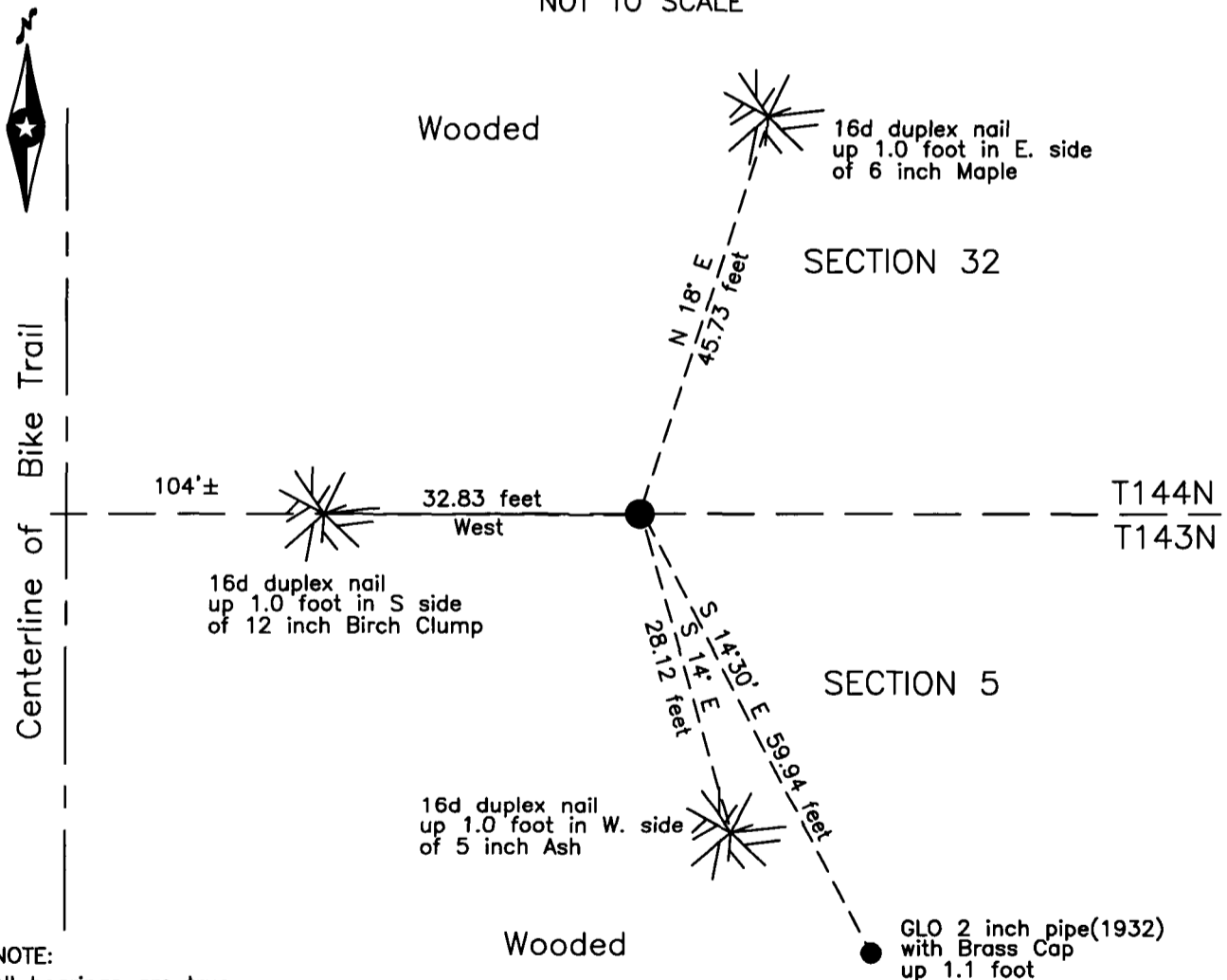
At the corner location shown on the sketch:

On 26 Sept 2018 found a 2.25 inch outside diameter iron pipe with plumber cap,
up 1.6 feet, 104 feet± east of centerline of Bike Trail.

left monument as found lowered monument removed monument (explain)

On _____ placed _____

SKETCH OF REFERENCE TIES
NOT TO SCALE



NOTE:
All bearings are true

Statement of evidence relative to this corner location is on the back of this page.

I hereby certify that this survey, plan or report was prepared by me or under my direct supervision and that I am a duly Licensed Land Surveyor under the laws of the State of Minnesota.

Terry L. Freeman, Cass County Surveyor
Date 10/23/18 MN License No. 21367

Statement of Evidence**North Quarter corner of Section 5, Township 143 North, Range 31 West, 5th Principal Meridian.**

- June 1875 B.C. Baldwin, General Land Office (GLO) Deputy Surveyor, in the notes for the North line of Township 143 North, Range 31 West, set a post for the original corner and referenced it as follows:
 4" Aspen S 75° E 40 links (26.40 feet) 3" Aspen N 8° W 47 links (31.02 feet)
 The above record is on file with the Minnesota Historical Society in St. Paul, Minnesota, copies are filed with the Cass County Highway Department, Surveyor's Office (CCHD/SO).
- Circa 1903 H. Dunaway, Surveyor, United States Army Corps of Engineers (ACE), Leech Lake Reservoir map for T.143 N., R.31 W., copy on file with the CCHD/SO, shows by symbol that the subject corner is a known corner.
- Feb. 1905 J.W. Curo, LS 1428, Curo Book 42, page 2, on file in the CCHD/SO, indicates the subject corner.
- Jan 1915 N.D. Gorman, Deputy County Surveyor, Survey Record #471, Book C, page 486 and Curo Book 87, pages 6, 7, 16, 38 and 45, on file in the CCHD/SO, lists the GLO witnesses and states "We find the old stake and the stump of the old NW bearing tree plainly marked from which we set a hub and tack for the true ¼ Cor." and witnesses as follows:
 8" Poplar S 18°10' W 34.00 feet 7" Tamarack N 73°47' W 9.42 feet
 This corner sets 100.40 feet east of center of Great Northern Rail Road.
- Nov. 1915 F.N. Molyneux, Assistant Engineer, Survey Record #471, Book C, page 492 and Curo Book 87, page 64, on file in the CCHD/SO, set iron monuments at subdivision corners of Sec. 32 as surveyed by Curo and Gorman last January.
- Dec. 1915 J.W. Curo, LS 1428, Cass County Surveyor, Survey of Section 32, Curo's Contract No. 3, on file in the Cass County Records Office, indicates 2 ¼"x 4' I.M., Known corner set from old bearing trees.
- May 1931 Hal D. Craig, U.S. Surveyor, Dependent Resurvey of a Portion of Township 144 North, Range 31 West, on file with the Minnesota Historical Society in St. Paul, Minnesota, copies are filed with the CCHD/SO, at proportionate distance, there is no remaining evidence of the original post or bearing trees. Set an iron post, 3 feet long, 2 inch diameter, with brass cap, 30 inches in the ground and referenced as follows:
 6" Ash N 78°45' E 17 links (11.22 feet) 8" Tamarack S 85° W 15 links (9.90 feet)
 2" Iron Pipe by Cass County Surveyor N 14°45' W 91 links (60.06 feet)
- Circa 1932 Minnesota Department of Transportation(MnDOT), right of way map, on file on the MnDOT web site, file 5-3_002 indicates U.S.G.L.O.S. 1931 monument 1 1/2 inch iron pipe and brass cap, 82.5 feet West of centerline Highway #371.
- March 2005 T.L. Freeman, LS 21367, Certificate of Survey for Nitchals, on file in the Northern Engineering and Consulting, Walker Office, indicates a 2 ½ inch Iron Pipe set in 1915 found.
- Sept. 2018 B. Hippen, technician, records of the CCHD/SO, found the 1915, 2.25 inch outside diameter iron pipe with plumber cap, up 1.6 feet, 104 feet, more or less, east of centerline of Bike Trail(on the old grade of the Great Northern Rail Road) and witnessed as follows:
 5" Ash S 14° E 28.12 feet 6" Maple N 18° E 45.73 feet
 12" Birch Clump West 32.83 feet 2" GLO Pipe S 14°30' E 59.94 feet
 The monument, recovered and established references for the position are shown on the face of this document.

Analysis of the recovered record data, field evidence and survey measurements, indicates that the monument recovered by the CCHD/SO in 2018 is the correct perpetuation of this corner.

County Coordinates (Cass County North)

Northing 258111.56

Easting 396880.23