



A000644510

OFFICE OF THE COUNTY RECORDER
CASS COUNTY, MINNESOTA
CERTIFIED, FILED, AND/OR
RECORDED ON

9/27/2018 10:16:18 AM

AS DOC #: A000644510

PAGES: 2

REC FEES: 0.00

KATHRYN M. NORBY
CASS COUNTY RECORDER

BY NG _____ Dep TX#: 149302

CERTIFICATE OF LOCATION OF GOVERNMENT CORNER

I hereby certify that this survey, plan, or report was prepared by me or under my direct supervision and that I am a duly Licensed Land Surveyor under the laws of the State of Minnesota.

Patrick A. Trottier

PATRICK A. TROTTIER

Date: 9-5-2018 License No: 41002
41002

OFFICE OF THE COUNTY RECORDER
County of CASS

I hereby certify that this document was filed in the Office of the County Recorder at _____ o'clock _____ .M. on the _____ day of _____, 20____ A.D.

County Recorder _____

By: _____, Deputy
DOCUMENT NO. _____

EAST QUARTER Corner of Section 31, Township 139, Range 26, 5th P.M.

On 5/9/2018 found a 2.5" IRON PIPE

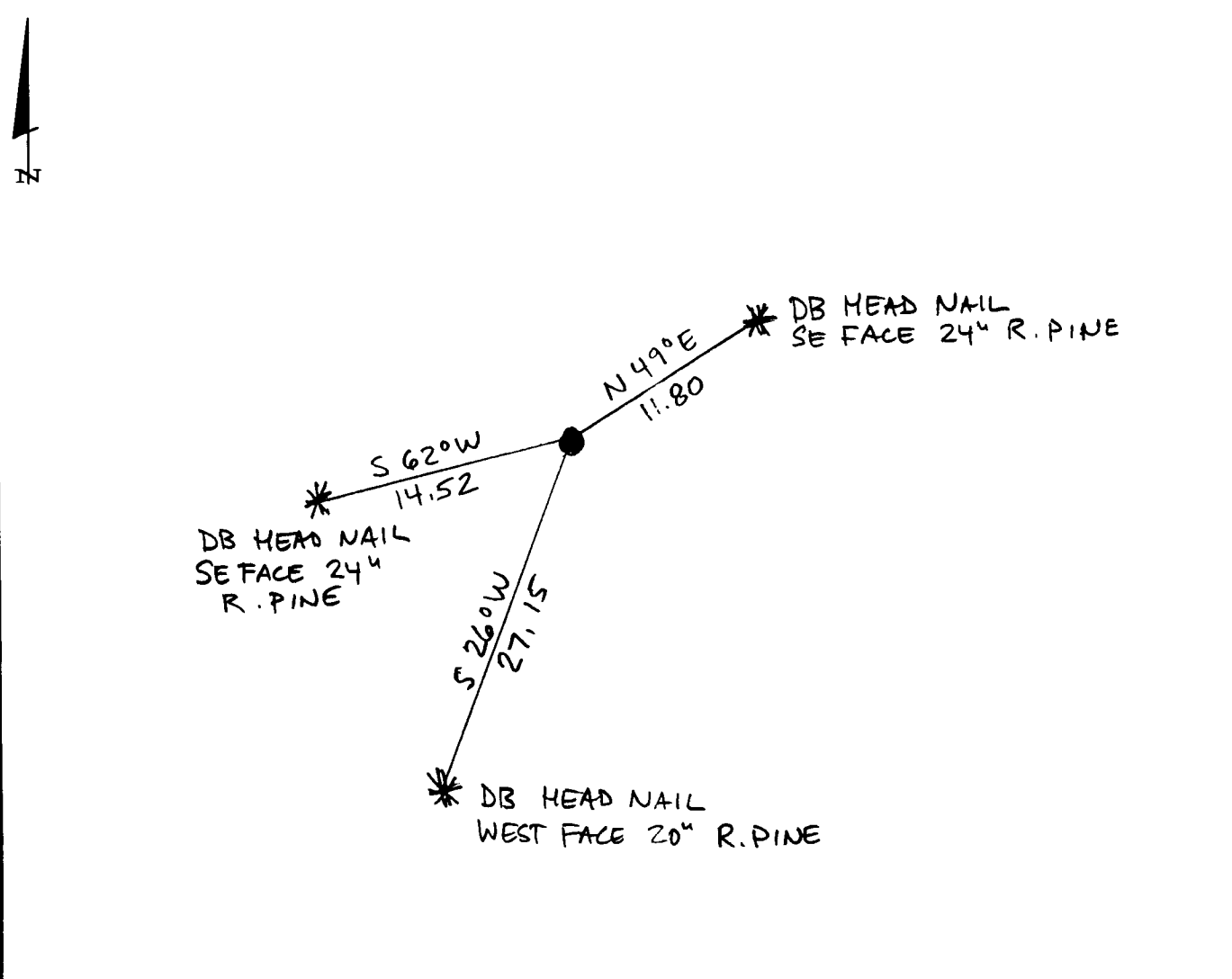
left monument as found, lowered monument, removed monument (explain)

On _____ placed a _____

SKETCH OF REFERENCE TIES

Corner Index: X.0-5.0

Not to Scale



Statement of evidence for this corner position is on the back of this page



X.0-5.0

Statement of Evidence

**East Quarter corner, Section 31, Township 139 North, Range 26
West, 5th Principal Meridian, Cass County, Minnesota**

1863 – Johnson and Thornton, US Deputy Surveyors originally established this corner position while surveying the interior subdivision lines of Township 139 North, Range 26 West. A wood post was set to mark the corner position with the following witnesses:

24" W. Pine N 75° E 6 links
17" W. Pine S 70° W 32 links

Information on file in the MN Historical Society, St. Paul, MN. Copies on file in the Cass County Highway Department/Surveyors Office (CCHD/SO).

1950 – Harold Curo, plat of Kavli's Wood Lake Shores, shows monument in place. Information on file in the CCRO.

2018 –A Stonemark survey crew found a 2.5 inch iron pipe up 0.5 feet from the ground, and is witnessed with the ties shown on the front of this certificate. Patrick Trottier PLS #41002, after analysis of record and survey information accepts this monument as the correct perpetuation of the corner.

County Coordinates (Cass County North NAD83/96)

Northing 102678.840
Easting 552040.500