



A000643882

OFFICE OF THE COUNTY RECORDER
CASS COUNTY, MINNESOTA
CERTIFIED, FILED, AND/OR
RECORDED ON

9/6/2018 10:49:24 AM

AS DOC #: A000643882

PAGES: 2

REC FEES: 0.00

KATHRYN M. NORBY
CASS COUNTY RECORDER

BY NG Dep TX#: 148823

Page 1 of 2
A000643882

CERTIFICATE OF LOCATION OF GOVERNMENT CORNER

I hereby certify that this survey, plan, or report was prepared by me or under my direct supervision and that I am a duly Licensed Land Surveyor under the laws of the State of Minnesota.

Patrick A. Trottier

PATRICK A. TROTTIER

Date: 8-30-2018 License No: 41002
41002

OFFICE OF THE COUNTY RECORDER
County of CASS

I hereby certify that this document was filed in the Office of the County Recorder at _____ o'clock _____ .M. on the _____ day of _____, 20 _____ A.D.

County Recorder _____

By: _____, Deputy
DOCUMENT NO. _____

NORTHEAST Corner of Section 30, Township 139, Range 26, 5th P.M.

On 6/4/2018 found a 1/2" IRON PIPE

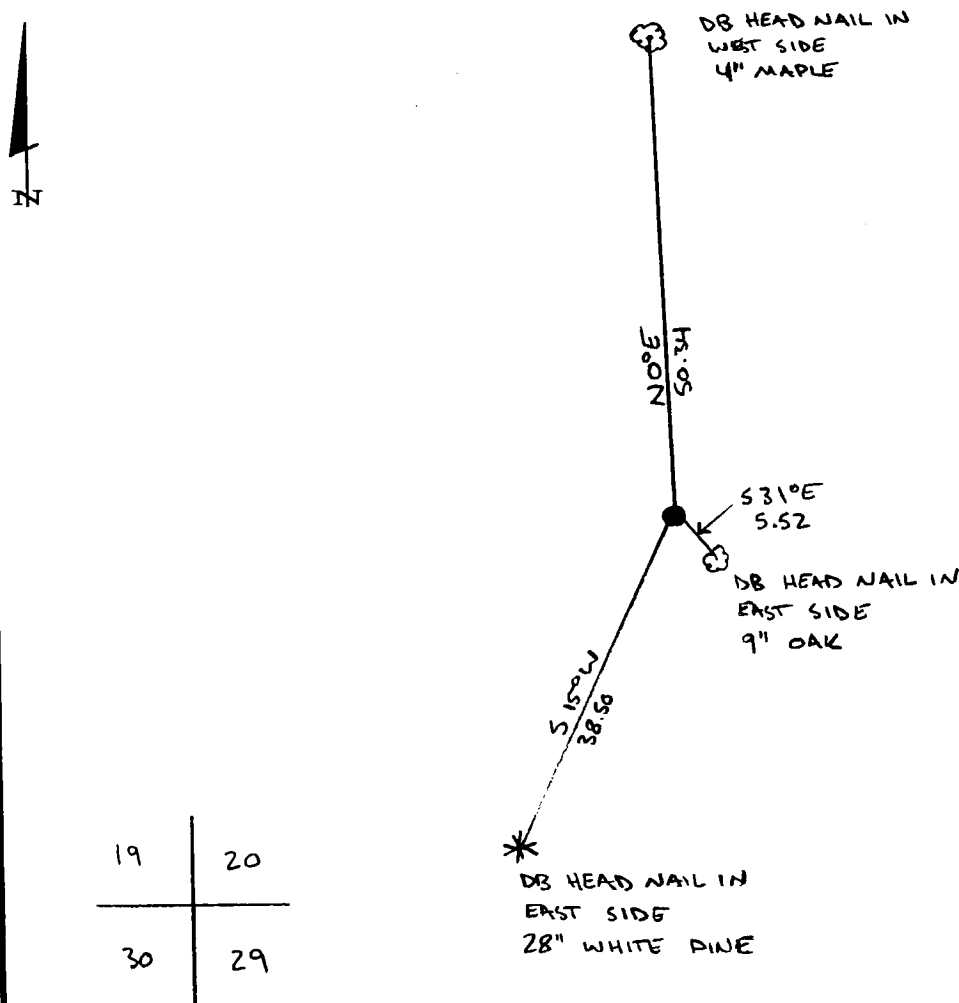
left monument as found, lowered monument, removed monument (explain)

On _____ placed a _____

SKETCH OF REFERENCE TIES

Corner Index: R.0-5.0

Not to Scale



Statement of evidence for this corner position is on the back of this page



R.0-5.0

Statement of Evidence

**Northeast corner, Section 30, Township 139 North, Range 26
West, 5th Principal Meridian, Cass County, Minnesota**

1863 – Johnson and Thornton, US Deputy Surveyors originally established this corner position while surveying the interior subdivision lines of Township 139 North, Range 26 West. A wood post was set to mark the corner position with the following witnesses:

8" Aspen	N 38° E	34 links
6" Y. Pine	S 15° E	39 links
7" Y. Pine	S 37° W	36 links
7" Aspen	N 60° W	44 links

Information on file in the MN Historical Society, St. Paul, MN. Copies on file in the Cass County Highway Department/Surveyors Office (CCHD/SO).

1938 – CCC, Washburn Lake Book 20, P52, corner is 2849' east of Mitchell Lake Road. Copies on file in the Washburn Lake Forestry Station.

1985 – Wallace Buckler, LS 9672, document number 282820, Plat of WANDRUS ESTATES indicates monument in place. Information on file in the Cass County Records Office.

1992 – Wallace Buckler, LS 9672, document number 343764, Plat of FIRST ADDITION TO WANDRUS ESTATES, indicates a set monument. Copies on file at the CCRO.

2008 – The CCSO/HD, job and file number 2007.065, on file at the CCSO/HD, indicates a 7/8" iron pipe up 0.5' was found with the following witnesses:

8" Maple	N 10° W	33.53 feet
20" W. Pine	S 15° W	38.50 feet
6" B. Oak	S 31° E	5.52 feet
10" Maple	West	10.97 feet

Information on file in the (CCHD/SO).

2013 – Jarrett Leas, LS 42619, March 2013, in correspondence with Mr. Buckler by telephone, determined the corner was set by Mr. Buckler circa mid 1980's.

2013 – A KLJ survey crew found a ½" iron pipe up 0.8' with the following witnesses:

14" Maple	S 89° W	10.97 feet
27" W. Pine	S 15° W	38.50 feet
9" B. Oak	S 31° E	5.52 feet

Information on file in the (CCHD/SO). COLOGC Doc# A000596809.

2018 – A Stonemark survey crew found a ½" inch bent iron pipe 0.8 feet above ground, a 9" B. Oak, S 31° E, 5.52', a 28" W. Pine, S 15° W, 38.50 feet, and is witnessed with the two found ties and an additional tie shown on the front of this certificate. Patrick Trottier PLS #41002, after analysis of record and survey information accepts this monument as the correct perpetuation of the corner.

County Coordinates (Cass County North NAD83/96)

Northing 110571.220
Easting 551980.046