



A000642623

OFFICE OF THE COUNTY RECORDER
CASS COUNTY, MINNESOTA
CERTIFIED, FILED, AND/OR
RECORDED ON

7/25/2018 11:02:58 AM

AS DOC #: A000642623

PAGES: 2

REC FEES: 0.00

KATHRYN M. NORBY
CASS COUNTY RECORDER

BY NG Dep TX#: 147795

Page 1 of 2
A000642623

Twp 141 Rge 26 Index No. C.0-25.0

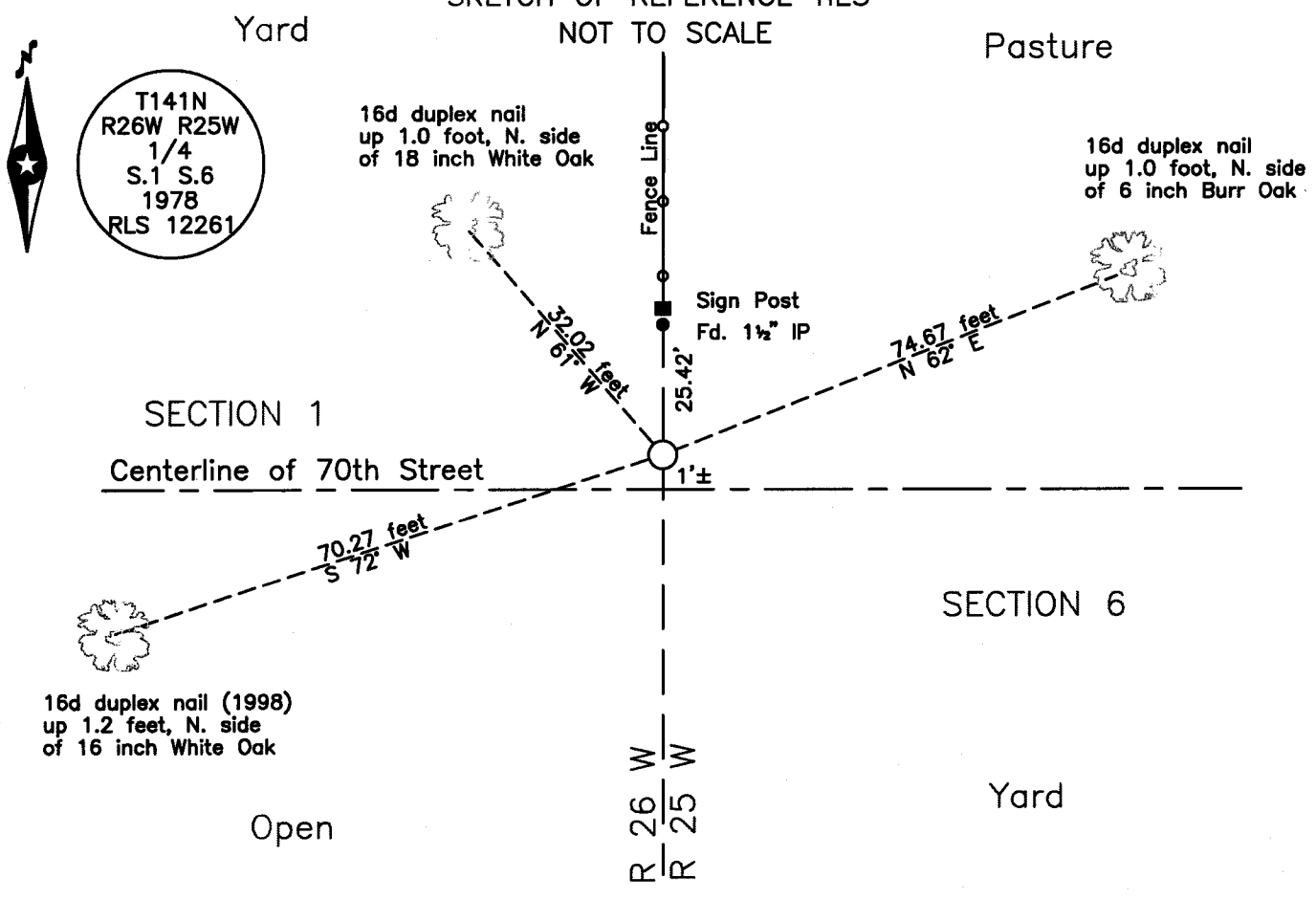
I hereby certify that this survey, plan or report was prepared by me or under my direct supervision and that I am a duly Licensed Land Surveyor under the laws of the State of Minnesota.

Terry L. Freeman, Cass County Surveyor

Date 7/18/18 MN License No. 21367

CERTIFICATE OF LOCATION OF GOVERNMENT CORNER

SKETCH OF REFERENCE TIES
NOT TO SCALE



East Quarter corner of Section 1, Township 141 N., Range 26 W., 5th P.M.
State of Minnesota, County of Cass

At the corner location shown on the sketch:

On 11 April 2018 found U.S.F.S. Monument down 0.8', 1.0' N.
of centerline (gravel) 70th Street

left monument as found lowered monument removed monument (explain)

On _____ placed _____

Statement of evidence relative to this corner location is on the back of this page.

**Index No. C.0-25.0**Statement of Evidence**East Quarter corner of Section 1, Township 141 North, Range 26 West, 5th Principal Meridian.**

- April 1871 E.P. Putnam, General Land Office (GLO) Deputy Surveyors in the notes of the East line of Township 141 North, Range 26 West, set a post for the original corner and referenced it as follows:
 8" Aspen N 81° E 14 links (9.24 feet) 4" Fir S 64° W 13 links (8.58 feet)
 Said records are on file with the Minnesota Historical Society, St. Paul, Minnesota, copies are filed with the Cass County Highway Department, Surveyor's Office (CCHD/SO).
- Circa 1927 Minnesota Department of Transportation(MN/DOT), Highway Plan 3-8, TH 6, on file on the MN/DOT web site as Document Number 1947787, indicates an Iron Pin, 5 inches below surface at the intersection of old roads and witnesses as follows:
 8" Poplar WSW 95.0 feet 24" Pine ESE 88.2 feet
 8" Elm SE 49.0 feet
- Nov. 1935 MN/DOT, Highway Plan 6-61, TH 200, on file on the MN/DOT web site as Document Number 1947404, indicates an Iron Pin, 5 inches below surface at the intersection of old roads, 708.2 feet north of centerline of Trunk Highway #34 now Highway #200.
- July 1977 M.E. Stefan, LS 12261, T141N R25W, Field Book 2, page 7, on file in the United States Department of Agriculture, Forest Service(USFS), Cass Lake Office, found a steel pin in center of road, 6 inches below surface on fence line to north and south. States "This Steel Pin has been in place many years. It has been used as the ¼ corner for Town of Remer, Fences North – South & Road East – West. I accept its position as the ¼ corner between Sections 1&6." Set a 6 inch concrete post in place of iron, down 18 inches, with brass tablet and witnessed as follows:
 1.5" Pipe North 25.7 feet Fence Post South 25.7 feet
 Fence Post N 15° W 28.1 feet Fence Post S 5° W 26.0 feet
 7" W. Oak N 34° W 43.10 feet 18" W. Oak S 46° W 108.45 feet
 17" W. Oak S 74° E 96.60 feet Steel Post North 25.5 feet
- May 1985 G.H. Stevenson, LS 12684, Worksheet for Section 1, copy on file at the CCHD/SO, indicates a USFS Monument at the subject corner.
- April 1989 W.E. Curo, LS 11395, Survey for Zylka, Curo Book 321 page 51, on file at the CCHD/SO, indicates a monument at the subject corner.
- Oct. 1994 W.E. Curo, LS 11395, Certificate of Survey for Hansen and Curo Book 335, page 75, on file at the CCHD/SO, indicates Iron monument found in place at the subject corner.
- Aug. 1998 B. Hippen and C. Loe, technicians, records of the CCHD/SO, found a Concrete Cylinder with brass cap, down 0.8 foot, 1 foot, more or less, north of centerline of 70th and witnessed as follows:
 10" W. Oak N 41° W 42.71 feet 20" W. Oak S 46° W 108 feet
 20" W. Oak S 76° E 96.60 feet 14" W. Oak S 72° W 70.27 feet
- Sept. 1999 M.E. Stefan, LS 12261, Certificate of Survey for Andrews in the NW ¼ of the SE ¼ of Section 1, copy on file in the CCHD/SO, indicates a 6 inch Concrete Cylinder/Bass Cap monument found at the subject corner.
- April 2001 J.J. Bunkowske, LS 24606, Certificate of Survey for Duro in the SW ¼ of the NE ¼ of Section 1, copy on file in the CCHD/SO, indicates a monument found at the subject corner.
- May 2018 B. Hippen, technician, records of the CCHD/SO, found USFS Concrete Monument with brass cap, down 0.8 foot, 1 foot, more or less, north of centerline of 70th Street and witnesses as follows:
 16" W. Oak(1998) S 72° W 70.27 feet 18" W. Oak N 61° W 32.02 feet
 6" B. Oak N 62° E 74.67 feet 1.5" Iron Pipe North 25.42 feet

The monument, recovered and established references for the position are shown on the face of this document.

Analysis of the recovered record data, field evidence and survey measurements, indicates that the monument recovered by the CCHD/SO in 1998 is the accepted location of this corner.

County Coordinates (Cass County North)

Northing 192354.38

Easting 578561.40