



A000637921

OFFICE OF THE COUNTY RECORDER  
CASS COUNTY, MINNESOTA  
CERTIFIED, FILED, AND/OR  
RECORDED ON

1/18/2018 11:01:00 AM

AS DOC #: A000637921

PAGES: 2

REC FEES: 0.00

KATHRYN M. NORBY  
CASS COUNTY RECORDER

BY SR Dep TX#: 143948

Twp 142 Rge 28 Index No. J.0-17.0

### CERTIFICATE OF LOCATION OF GOVERNMENT CORNER

Northeast corner of Section 15, Township 142 N., Range 28 W., 5th P.M.  
State of Minnesota, County of Cass

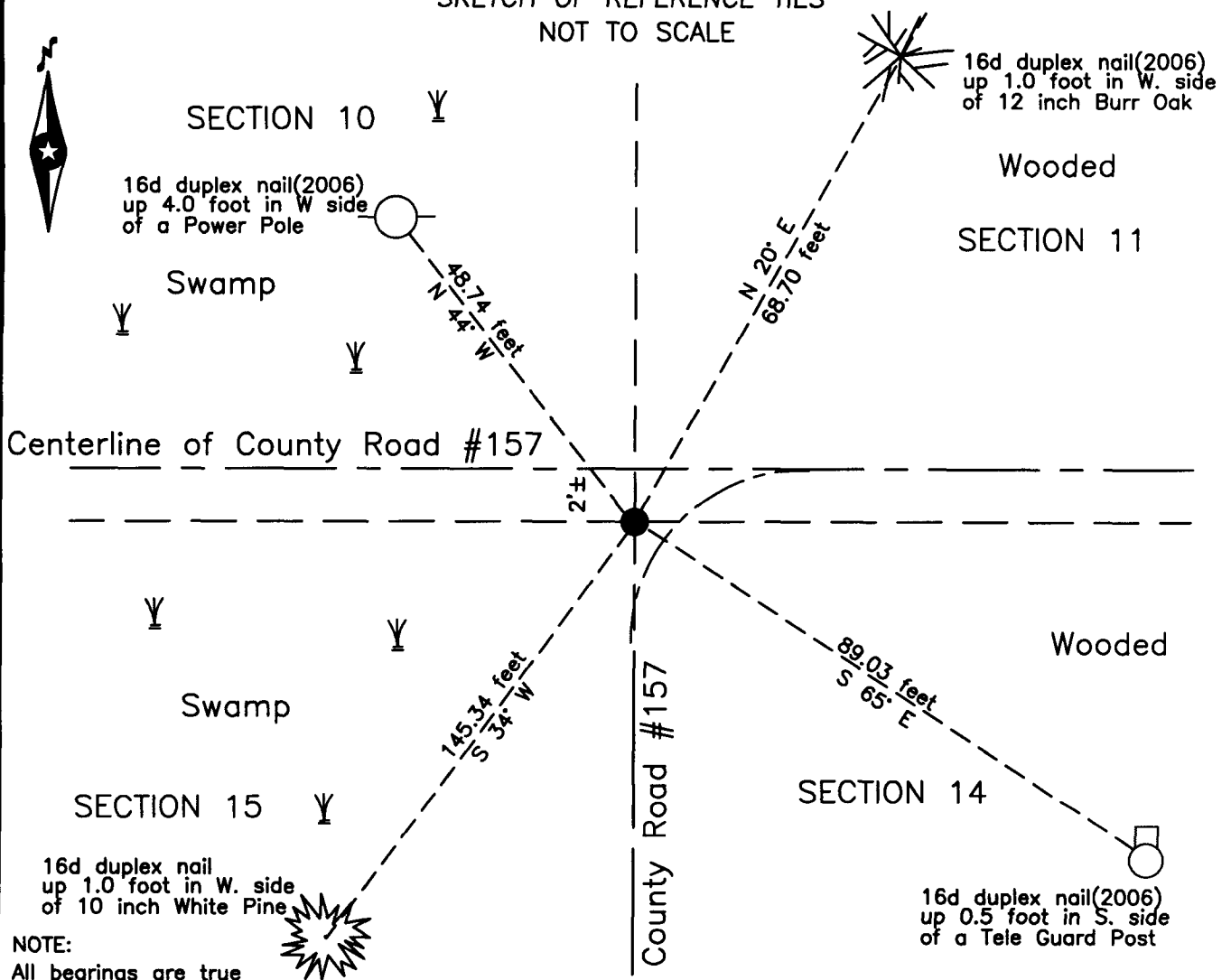
At the corner location shown on the sketch:

On 2 May 2017 found a 7/8 inch outside diameter iron pipe capped RLS 21367,  
down 0.6 foot, on centerline County Road #157.

left monument as found     lowered monument     removed monument (explain)

On \_\_\_\_\_ placed \_\_\_\_\_

#### SKETCH OF REFERENCE TIES NOT TO SCALE



NOTE:  
All bearings are true

Statement of evidence relative to this corner location is on the back of this page.

I hereby certify that this survey, plan or report was prepared by me or under my direct supervision and that I am a duly Licensed Land Surveyor under the laws of the State of Minnesota.

Terry L. Freeman, Cass County Surveyor  
Date 1/17/18 MN License No. 21367



**Index No. J.0-17.0**Statement of Evidence**Northeast corner Section 15, Township 142 North, Range 28 West, 5th Principal Meridian.**

- Feb. 1874 P.H. Conger, General Land Office (GLO) Deputy Surveyor, in the notes of the subdivision of Township 142 North, Range 28 West, set a post for the original corner and referenced it as follows:  
 6" Tamarac N 80° E 26 links (17.16 feet) 8" W. Pine N 25° W 65 links (42.90 feet)  
 5" Tamarac S 43° E 62 links (40.92 feet) 4" Spruce S 70° W 89 links (58.74 feet)  
 The above records are on file with the Minnesota Historical Society in St. Paul, Minnesota, copies are filed with the Cass County Highway Department, Surveyor's Office (CCHD/SO).
- May 1916 H.F. Baldwin, Deputy County Surveyor, CCHD/SO, Survey Record #288, Book B, page 221 and Curo Book 77, pages 7 and 41, on file in the CCHD/SO, lists the GLO witnesses and states "A Tamarac Corner post with scribe marks sets correct distance from B.Ts." Later states an iron monument was set.
- Aug. 1919 E.B. Horst, LS 376, Deputy County Surveyor, Survey Record #435, Book C, page 343, on file in the CCHD/SO, states 39251.0 cor. to secs. 10-11-14-15 sets W. 162.5 ft and 39516.5 on sec. line Sec. Cor. 10-11-14-15 sets N. 209.2 ft.
- Oct 1919 E.B. Horst, LS 376, Ditch Shelf 1, Book 6, page 41, on file in the CCHD/SO, indicates at Station 392+51 corner sets west 162.5 feet and at Station 395+16.5 corner sets north 209.2 feet, Sec. Cor. I.M.
- June 1928 Hal D. Craig, General Land Office U. S. surveyor, states the corner is a 2 inch iron pipe, set by County Surveyor of Cass County. North and alongside of iron pipe. Set an iron post, 3 feet long, 2 inches diameter, 26 inches in the ground, for the corner and lists original witnesses as follows:  
 12" W. Pine N 27°45' W 65 links (42.90 feet)  
 12" Tamarack stump N 66°30' E 26 links (17.16 feet)  
 12" Tamarack fallen S 43° E 62 links (40.92 feet)  
 New witnesses as follows:  
 12" W. Oak N 20°30' E 73 links (48.18 feet) 10" W. Pine S 45° E 67 links (44.22 feet)  
 10" Tamarack S 20°30' W 81 links (53.46 feet) 8" Tamarack N 35°45' W 30 links (21.78 feet)  
 The above records are on file with the Minnesota Historical Society, St. Paul, Minnesota, copies are filed with the CCHD/SO.
- March 1935 C. Sherman, Civilian Conservation Corp.(CCC) Form 874-9, on file in the United States Department of Agriculture Forest Service (USFS), Cass Lake Office, indicates he found a 10 inch Oak north 1 CH. Placed FSLP on same.
- April 1993 C.R. Krause, technician, USFS, T142NR28W Book 2, page 61, on file in the USFS Cass Lake Office, states Search at intersection of County Roads E and W and S, no iron could be located at surface, road fill of about 3 to 4 feet at corner, monument could be too deep to pick up with locator, may have to dig with backhoe later.
- April 2006 T. Freeman, LS 21367, Certificate of Survey and notes for Brent Zapzalka in Section 15, on file in the Walker office of Northern Engineering and Consulting (NECI) and the CCHD/SO, indicates the corner was set at the intersection of County Road #157, south and east and witnessed as follows:  
 15" Oak N 20° E 68.70 feet 6" Wood Post S 62° E 89.03 feet  
 P. Pole N 44° W 48.74 feet
- May 2017 B. Hippen, technician, records of the CCHD/SO, found 7/8 inch outside diameter iron pipe, down 0.6 foot, 2 feet, more or less, south of centerline of County Road #157 to the east, on the extension of County Road #157 to the south and witnesses as follows:  
 12" B. Oak(2006) N 20° E 68.70 feet Tele. Guard Post(2006) S 65° E 89.03 feet  
 P. Pole(2006) N 44° W 48.74 feet 10" W. Pine S 34° W 145.34 feet

The monument, recovered and established references for the position are shown on the face of this document.

**Analysis of the recovered record data, field evidence and survey measurements, indicates that the monument recovered by the CCHD/SO in 2017 is the accepted location of this corner.**

**County Coordinates (Cass County North)**

**Northing 217481.65**

**Easting 503449.72**