



A000636848

OFFICE OF THE COUNTY RECORDER
CASS COUNTY, MINNESOTA
CERTIFIED, FILED, AND/OR
RECORDED ON

12/7/2017 1:56:38 PM

AS DOC #: A000636848

PAGES: 2

REC FEES: 0.00

KATHRYN M. NORBY
CASS COUNTY RECORDER

BY SR _____ Dep TX#: 143133

Page 1 of 2 A000636848

Twp 137 Rge 29 Index No. V.0-05.0

CERTIFICATE OF LOCATION OF GOVERNMENT CORNER

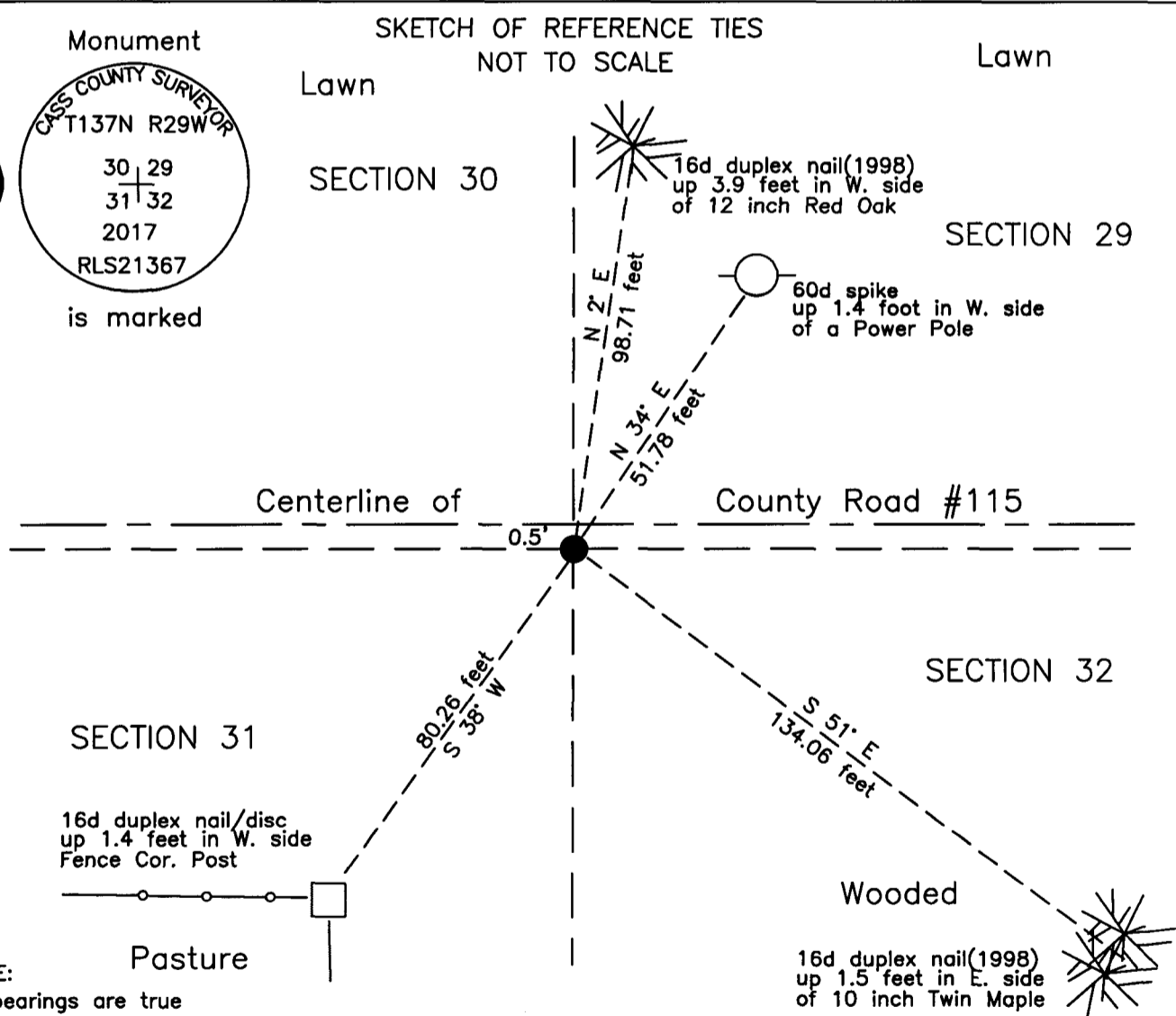
Northeast corner of Section 31, Township 137 N., Range 29 W., 5th P.M.
State of Minnesota, County of Cass

At the corner location shown on the sketch:

On 30 Sept 1998 found _____ remains of 8 inch concrete monument, tipped and
_____ concrete witness to the southwest.

left monument as found lowered monument removed monument (explain)

On 20 Oct 2017 placed an 1 inch by 32 inch aluminum tube with aluminum cap,
down 0.05 foot, 0.5 foot± south of new centerline County Road #115.



Statement of evidence relative to this corner location is on the back of this page.

I hereby certify that this survey, plan or report was prepared by me or under my direct supervision and that I am a duly Licensed Land Surveyor under the laws of the State of Minnesota.

Terry L. Freeman, Cass County Surveyor
Date 12/6/17 MN License No. 21367

**Index No. V.0-05.0**Statement of Evidence**Northeast corner of Section 31, Township 137 North, Range 29 West, 5th Principal Meridian.**

- July 1865 G.B. Wright, General Land Office (GLO) Deputy Surveyor in the notes of the subdivision of Township 137 North, Range 29 West, set a post for the original corner and referenced it as follows:
 10" Aspen N 48° E 33 links (21.78 feet) 12" Aspen N 22° W 50 links (33.00 feet)
 14" Aspen S 45° W 36 links (23.76 feet) 14" Aspen S 53° E 10 links (6.60 feet)
 Said records are on file with the Minnesota Historical Society, St. Paul, Minnesota, copies are filed with the Cass County Highway Department, Surveyor's Office (CCHD/SO).
- Sept. 1910 J.W. Curo, LS 1428, Survey Record #156, Book A, pages 323 and 328 and Curo Book 91, page 19, on file in the CCHD/SO, lists the GLO witnesses and states they are all gone. Later sets an 8 x 8 x 36 inch cement post at double proportion position.
- Aug. 1914 J.W. Curo, LS 1428, Curo Book 93, page 108, on file in the CCHD/SO, states "the live 8 x 8 x 36" cement post sets East 8.46 feet making the total distance 5241.60'.
- Sept. 1917 J.F. Pomasel, LS 1728, Lateral of SRH #80, Ditch Shelf 3, Book 9, pages 2, 4 and 8 on file in the CCHD/SO, indicates the subject corner at 52+46.6 is concrete monument in center of road.
- Aug. 1920 G. Weatman, State Road No. 12, Ditch Shelf 1, Book 13, page 5, on file in the CCHD/SO, indicates 6" Con Mon. and Station 52+96.3 and R.P. as follows:
 5" Oak SSW 35.7 feet 3" Birch hub SE 48.8 feet
- Oct. 1925 A.R. Taubman, Assistant Engineer, S.A.R. No. 6, Ditch Shelf 5, Book 153, page 29, on file in the CCHD/SO, indicates corner at station 52+53.5, and notes R.P. as follows:
 10" N. Pine N 91.8 feet 10" Oak SW 38.9 feet
- May 1927 A.R. Taubman, Assistant Engineer, S.A.R. No. 6, Ditch Shelf 1, Book 3, page 7, on file in the CCHD/SO, and Certificate of Location of Government Corner, on file in the Cass County Recorders Office as Document No. A000583894, indicates corner located from previous road survey R.P.s. A Concrete Monument 4"x 4" top, 6"x 6" base, 18" long and witnessed by triangular concrete monuments as follows:
 Conc. Mon. N 52°05' W 46.669 feet Conc. Mon. S 37°55' W 46.669 feet
- Sept. 1998 B. Hippen, technician and M. Lawrenson, Backhoe Operator, CCHD records of the CCHD/SO, excavated a 6 feet wide by 10 feet long hole, on centerline of County Road #115 at Township Road to south, the dig was 4 feet deep. Found concrete monument, down 4 feet, tipped, also found concrete witness to southwest. Set spike for corner above monument position and 46.67 feet from concrete witness. Concrete monuments were removed and the corner was witnessed as follows:
 30" Red Oak N 40° E 94.94 feet 8" Twin Maple S 51° E 134.06 feet
 8" Red Oak N 2° E 98.71 feet 6" Aspen N 12° W 91.52 feet
- Sept. 2000 B. Hippen, technician, records of the CCHD/SO, set a magnetic concrete nail from witnesses, on centerline of County Road #115 and 2 feet, more or less, east of Township Road to south.
- Sept. 2002 B. Hippen, technician, records of the CCHD/SO, found a magnetic concrete nail, on centerline of County Road #115 and Township Road to south and located with Global Positioning System (GPS).
- Oct. 2017 B. Hippen, technician, records of the CCHD/SO, set an aluminum Cass County monument after County Road construction was completed, at the 1998 position, down 0.05 foot, 0.5 foot south of the new centerline of County Road #115 and added new witnesses as follows:
 Power Pole N 34° E 51.78 feet Fence Corner S 38° W 80.26 feet

The monument, recovered and established references for the position are shown on the face of this document.

Analysis of the recovered record data, field evidence and survey measurements, indicates that the monument set by the CCHD/SO in 2017 is the accepted location of this corner.

County Coordinates (Cass County South)

Northing 278520.73

Easting 519871.90