



A000636512

OFFICE OF THE COUNTY RECORDER
CASS COUNTY, MINNESOTA
CERTIFIED, FILED, AND/OR
RECORDED ON

11/27/2017 2:09:23 PM

AS DOC #: A000636512

PAGES: 2

REC FEES: 0.00

KATHRYN M. NORBY
CASS COUNTY RECORDER

BY MW Dep TX#: 142902

Page 1 of 2
A000636512

Twp 137 Rge 32 Index No. N.0-13.0

CERTIFICATE OF LOCATION OF GOVERNMENT CORNER

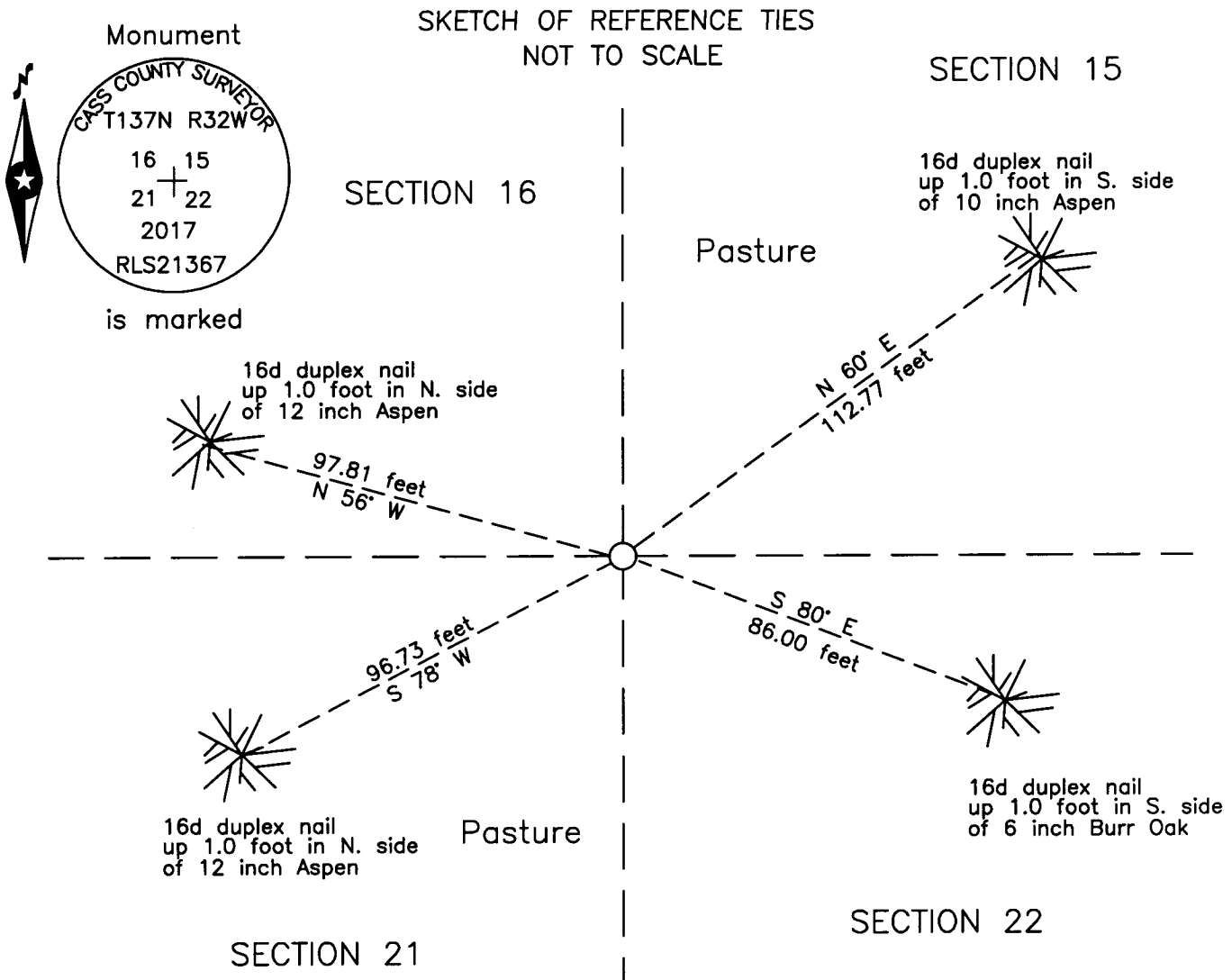
Northeast corner of Section 21, Township 137 N., Range 32 W., 5th P.M.
State of Minnesota, County of Cass

At the corner location shown on the sketch:

On 8 Sept 2017 found a 2 inch outside diameter iron pipe, horizontal, and bent.

left monument as found lowered monument removed monument (explain)

On 14 Sept 2017 placed an 1 inch by 30 inch aluminum tube with aluminum cap,
down 0.1 foot, at the lower and straiter end of found 2 inch pipe.



NOTE:
All bearings are true

Statement of evidence relative to this corner location is on the back of this page.

I hereby certify that this survey, plan or report was prepared by me or under my direct supervision and that I am a duly Licensed Land Surveyor under the laws of the State of Minnesota.

Terry L. Freeman, Cass County Surveyor
Date 11/22/17 MN License No. 21367

Statement of Evidence

Northeast corner Section 21, Township 137 North, Range 32 West, 5th Principal Meridian.

Dec. 1870 R. Cronk, General Land Office (GLO) Deputy Surveyor, notes for the subdivision of Township 137 North, Range 32 West, set a post for the original corner and referenced it as follows:
 16" W. Pine S 72 1/2° E 27 links (17.82 feet) 18" W. Pine S 20° W 11 links (7.26 feet)
 16" W. Pine N 53° E 71 links (46.86 feet) 16" W. Pine N 9° W 54 links (35.64 feet)
 The above record is on file with the Minnesota Historical Society in St. Paul, Minnesota, copies are filed with the Cass County Highway Department, Surveyor's Office (CCHD/SO).

June 1916 E.B. Horst, LS 376, Survey Record Number 353, Book B, page 545 and Curo Book 65, page 29, on file in the CCHD/SO, states "walk to vicinity of cor. To secs. 15, 16, 21, 22 where Jenson and Burtson saw the B.T's, several years ago. We look for them, but cannot find the place any more, so we go to 1/4 cor. Bet. 15 and 16, run a compass line S. and chain roughly to find corner". He lists the GLO witnesses and states "We find all four stumps badly burned, but marks are still plain and check for course and distance. I set corner from B.T's and mark old B.T's again, as there are no trees near."

June 1917 E.B. Horst, LS 376, Survey Record Number 386, Book C, page 64 and Curo Book 76, page 50, on file in the CCHD/SO, states "at cor. to 15 - 16 - 21 - 22 - 137 - 32 set I.M." I.M. being a 2 inch by 48 inch Boiler flue.

Sept. 2017 B. Hippen, technician, records of the CCHD/SO, found a 2 inch, outside diameter iron pipe, horizontal and badly bent, bend starts 2 feet from one end and this end being slightly lower, determine this to be the likely position for the 1916 monument. An Aluminum County monument was set at this position, down 0.1 foot and witnessed as follows:

12" Aspen	N 56° W	97.81 feet	6" Burr Oak	S 80° E	86.00 feet
12" Aspen	S 78° W	96.73 feet	10" Aspen	N 60° E	112.77 feet

The recovered and established references for the position are shown on the face of this document.

Analysis of the recovered record data, field evidence and survey measurements, indicates that the monument set by the CCHD/SO in 2017 is the correct perpetuation of this corner.

County Coordinates (Cass County South)

Northing 288595.41

Easting 435637.56