



A000636500

OFFICE OF THE COUNTY RECORDER  
CASS COUNTY, MINNESOTA  
CERTIFIED, FILED, AND/OR  
RECORDED ON

11/27/2017 2:09:11 PM

AS DOC #: A000636500

PAGES: 2

REC FEES: 0.00

KATHRYN M. NORBY  
CASS COUNTY RECORDER

BY MW Dep TX#: 142902

Twp 136 Rge 30 Index No. C.0-25.0

### CERTIFICATE OF LOCATION OF GOVERNMENT CORNER

East Quarter corner of Section 1, Township 136 N., Range 30 W., 5th P.M.  
State of Minnesota, County of Cass

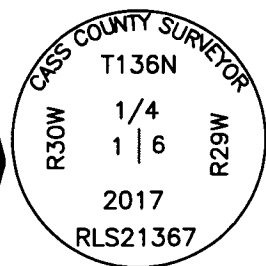
At the corner location shown on the sketch:

On \_\_\_\_\_ found \_\_\_\_\_

left monument as found     lowered monument     removed monument (explain)

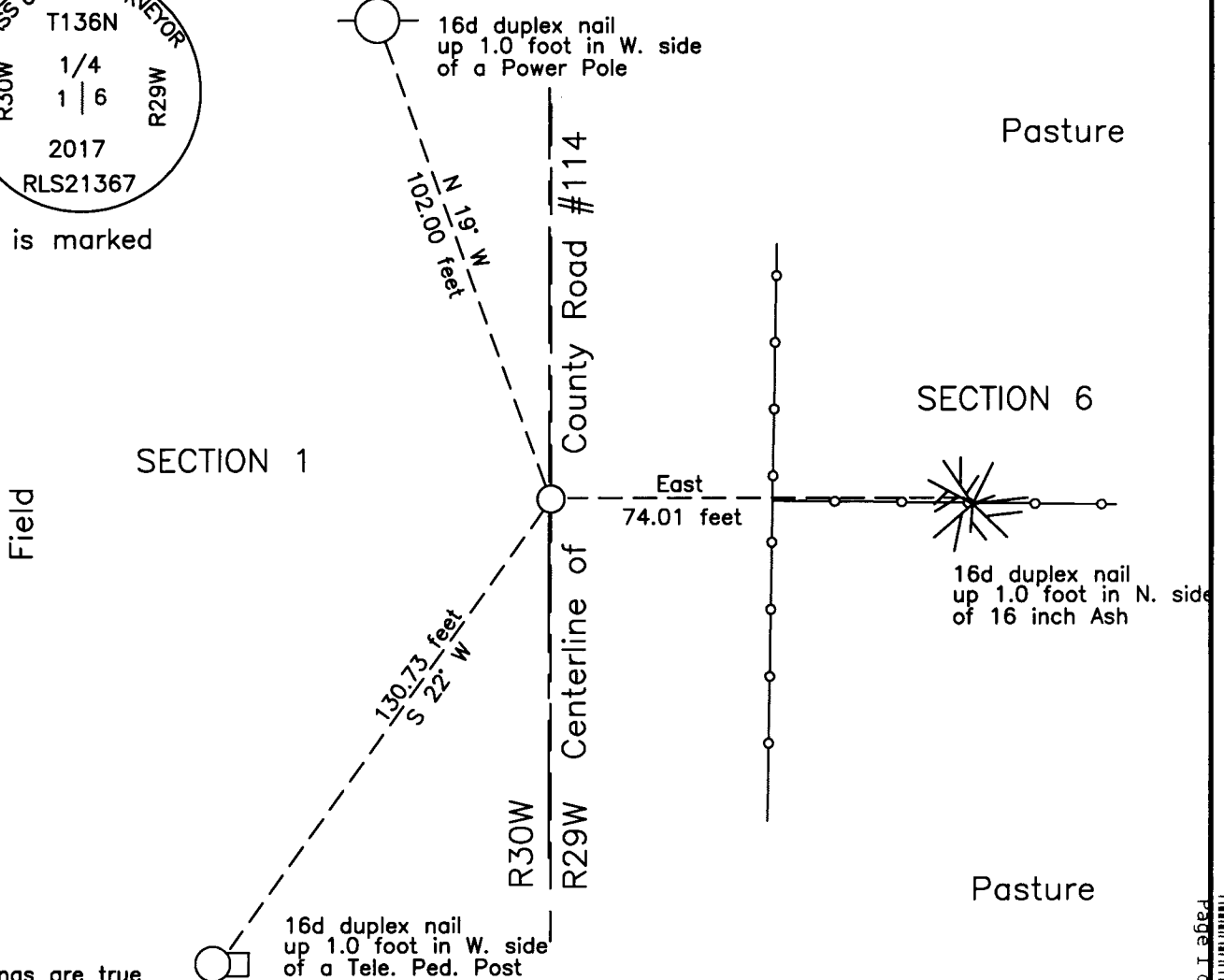
On 20 Oct 2017 placed an 1 inch by 24 inch aluminum tube with aluminum cap,  
down 0.05 foot, on new centerline County Road #114.

Monument



is marked

#### SKETCH OF REFERENCE TIES NOT TO SCALE



NOTE:  
All bearings are true

Statement of evidence relative to this corner location is on the back of this page.

I hereby certify that this survey, plan or report was prepared by me or under my direct supervision and that I am a duly Licensed Land Surveyor under the laws of the State of Minnesota.

Terry L. Freeman, Cass County Surveyor  
Date 11/22/17 MN License No. 21367

Page 1 of 2  
A000636500





**Index C.0-25.0**

Statement of Evidence

**East Quarter corner of Section 1, Township 136 North, Range 30 West, 5th Principal Meridian.**

Jan. E.N. Darling, General Land Office (GLO) Deputy Surveyor in the notes of the survey of the East line of  
1858 Township 136 North, Range 30 West, set a post for the original corner and referenced it as follows:  
12" Tam S 86° W 17 links (11.22 feet) 15" Tam S 57° W 30 links (19.80 feet)

The above records are on file with the Minnesota Historical Society in St. Paul, Minnesota, copies are filed with the Cass County Highway Department, Surveyor's Office (CCHD/SO).

Nov. W.H. Luffman, Loon Lake Township, Supervisors' Road Order "9", on file in the CCHD/SO, indicates he surveyed  
1910 a road between the Southeast corner of section 12 and the Northeast corner of Section 1, Township 136 North,  
Range 30 West.

Jan. J.M. Greene, Cass County Surveyor, Curo Book 62, pages 87, on file in the CCHD/SO, indicates a symbol at the  
1927 subject corner which indicates a Monument set. Resurvey of Section 1, on file in the Cass County Recorders  
Office (CCRO) as Document Number 86319, indicates corner.

June E.B. Horst, LS 376, Curo Book 150, page 29, on file in the CCHD/SO, states "intersect Range line 464.5 ft N. of ¼  
1917 cor between Secs 1 & 6 T 136 Rge 29 & 30."

June B. Hippen and T. Anderson, technicians, records of the CCHD/SO, found no evidence of corner at the search area  
2002 for the subject corner.

Oct. B. Hippen, technician, records of the CCHD/SO, set an aluminum Cass County monument at the 1926 distance  
2017 between the southeast corner and north one sixteenth corner of section 1, on the new centerline of County Road  
#114 and witnesses as follows:

Power Pole	N 19° W	102.00 feet	16" Ash	East	74.01 feet
Tele Ped Post	S 22° W	130.73 feet			

The monument, recovered and established references for the position are shown on the face of this document.

**Analysis of the recovered record data, field evidence and survey measurements, indicates that the monument set by CCHD/SO in 2017 is the accepted location of this corner.**

**County Coordinates (Cass County South)**

**Northing 270601.73**

**Easting 518319.77**