



A000635007

OFFICE OF THE COUNTY RECORDER
CASS COUNTY, MINNESOTA
CERTIFIED, FILED, AND/OR
RECORDED ON

10/5/2017 11:08:52 AM

AS DOC #: A000635007

PAGES: 2

REC FEES: 0.00

KATHRYN M. NORBY
CASS COUNTY RECORDER

BY MW Dep TX#: 141694

Page 1 of 2 A000635007

INDEX NO. R-0-7.0

CERTIFICATE OF LOCATION OF GOVERNMENT CORNER

N 1/4 Corner of Section 29, Township 139 N., Range 25 W., 5TH P.M., State of Minnesota, County of Cass

At the corner location shown on the sketch:

On 6/13/2017 found a ALUMINUM COUNTY MONUMENT
Date

X left monument as found lowered monument removed monument (explain)

On _____ placed a _____
Date

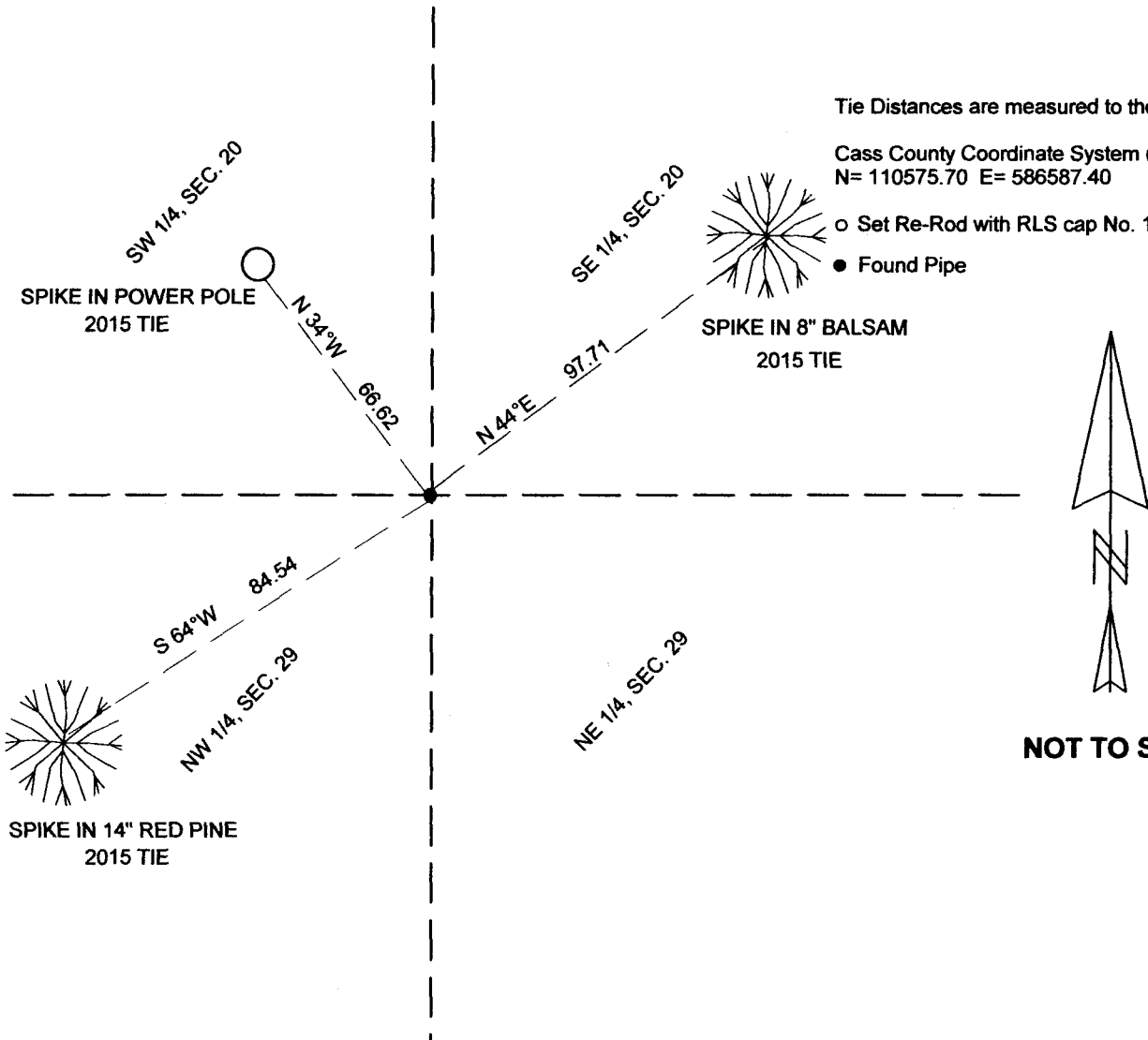
SKETCH OF REFERENCE TIES

Tie Distances are measured to the spikes.

Cass County Coordinate System (North Zone)
N= 110575.70 E= 586587.40

○ Set Re-Rod with RLS cap No. 17774

● Found Pipe



NOT TO SCALE

I hereby certify that this document and the data contained herein was prepared by me or under my direct supervision.

Marvin R. Kohout
Marvin R. Kohout

9/27/2017
Date

Statement of evidence relative to this corner location is on back of page.

License No. 17774

Land surveyor



INDEX NO. R.O-7.0

STATEMENT OF EVIDENCE

NORTH 1/4 OF SECTION 29, TOWNSHIP 139 N., RANGE 25 W., 5TH P.M.

- 1863 DEPUTY SURVEYORS GATES A. JOHNSON, AND ALONZO L. THORTON, SET ¼ CORNER POST. REFERENCES:
7" ASPEN S11E 59 LINKS (38.94 FT) 12" J. PINE N45E 34 LINKS (22.44 FT)
RECORDS ON FILE AT THE MN HISTORICAL SOCIETY IN ST. PAUL AND COPIES FILED WITH CASS COUNTY HIGHWAY DEPARTMENT/ SURVEYOR'S OFFICE (CCHD/SO)
- 1908 JOHN W. CURO, LIC. NO. 1428, SET A 4X4X48" WOOD POST 2642.43 EAST OF THE NW CORNER OF SECTION 29 SURVEY RECORD 160, BK A, PG 342 CURO BK 95, PG 4,7-8 CCHD/SO
- 1915 G. A. RALPH, ENGINEER, INDICATES THE CORNER AT STATION 1168+98 REFERENCES:
4" SPRUCE HUB NORTH 45 4" SPRUCE HUB SOUTH 50
SURVEY RECORD 258, BK B, PG93 CURO BK 82 PG 64 CCHD/SO
- 1937 CCC, MEASURED 2654 FROM NW CORNER OF SECTION TO 4" SQUARE POST
WASHBURN LAKE CAMP BK 2 PG 30 WASBURN LAKE FORESTRY STATION
- 1972 J.R.WORCHESTER, COUNTY HIGHWAY EMPLOYEE, INDICATES AN ASSUMED CORNER POSITION 7 FEET NORTH OF P.O.T. STATION 198+15 COUNTY HIGHWAY DEPT.
S.A.P. 11-658-02 CCHD/SO
- 1984 F. C. JACKSON, LIC.NO. 3600, INDICATES A POSITION FOR THE SUBJECT CORNER.
CCHD/SO
- 1986 WALLACE F. BUCKLER, LIC. NO. 9672, INDICATES A CORNER 2640.00 EAST OF THE NE CORNER OF SECTION 30 SURVEY RECORD NO. 3770 CCHD/SO
- 2007 BRIAN HIPPEN, TECHNICIAN, FOUND A PK NAIL 7' +/- SOUTH OF THE C/L OF COUNTY ROAD NO. 58, ON THE C/L OF SHAFER LAKE ROAD. CCHD/SO
- 2015 BRIAN HIPPEN, TECHNICIAN, SET A CASS COUNTY ALUMINUM MONUMENT EAST OF THE NE CORNER OF SEC. 30 AT THE 1908 DISTANCE OF 2642.43. THE MONUMENT IS 8.5 +/- SOUTH OF THE NEW C/L AND 12+/- WEST OF THE C/L OF SHAFER LAKE ROAD.
REFERENCES: POWER POLE N34W 66.62 8" BALSAM N44E 97.91
14" N.PINE S64W 84.54 CCHD/SO
- 2015 TERRY L. FREEMAN, LIC. NO. 21367, CASS COUNTY SURVEYOR, FILES A CERTIFICATE OF LOCATION OF GOVERNMENT LOCATION DOC. NO. A000618366 COUNTY RECORDER'S OFFICE
- 2017 SURVEY TECHNICIANS TRAVIS BARE AND JEFF SARKELA, NORTHWOODS SURVEYING, FOUND THE CASS COUNTY ALUMINUM MONUMENT. THE MONUMENT WAS ACCEPTED AS MARKING THE CORNER LOCATION. BT TAGS WERE PLACED ON REFERENCES AS SHOWN ON PAGE 1