



A000634998

OFFICE OF THE COUNTY RECORDER
CASS COUNTY, MINNESOTA
CERTIFIED, FILED, AND/OR
RECORDED ON

10/5/2017 11:08:43 AM

AS DOC #: A000634998

PAGES: 2

REC FEES: 0.00

KATHRYN M. NORBY
CASS COUNTY RECORDER

BY MW Dep TX#: 141694

INDEX NO. P.0-25.0

CERTIFICATE OF LOCATION OF GOVERNMENT CORNER

E 1/4 Corner of Section 24, Township 139 N., Range 26 W., 5TH P.M., State of Minnesota, County of Cass

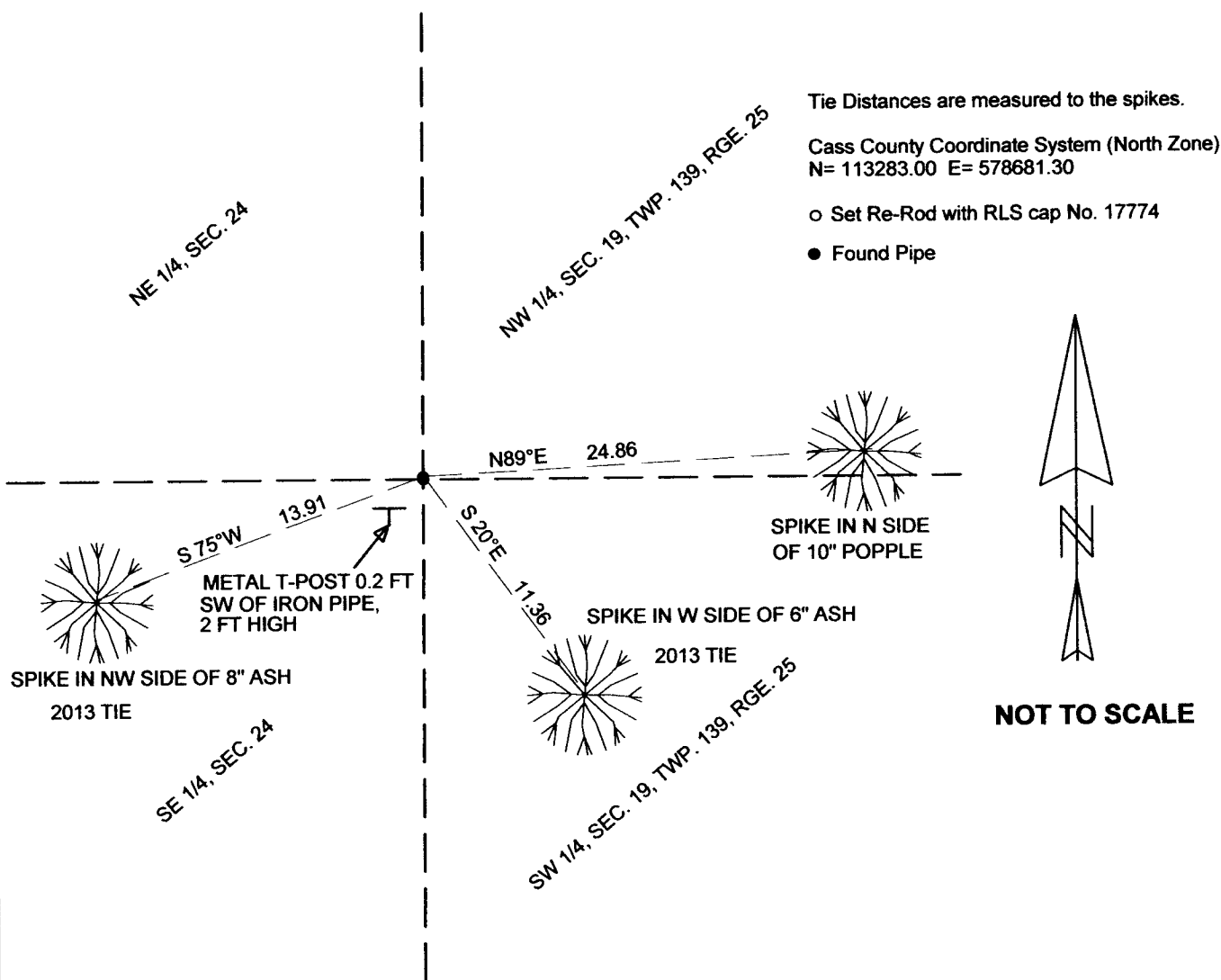
At the corner location shown on the sketch:

On 7/10/17 found a 1/2" IRON PIPE, 0.1 FT ABOVE SURFACE
Date

X left monument as found lowered monument removed monument (explain)

On _____ placed a _____
Date

SKETCH OF REFERENCE TIES



I hereby certify that this document and the data contained herein was prepared by me or under my direct supervision.

Marvin R. Kohout 9/27/2017
Marvin R. Kohout Date

License No. 17774

Land surveyor

Statement of evidence relative to this corner location is on back of page.





INDEX NO. P.O-25.0

STATEMENT OF EVIDENCE

EAST 1/4 OF SECTION 24, TOWNSHIP 139 N., RANGE 26 W., 5TH P.M.

1863 DEPUTY SURVEYORS GATES A. JOHNSON, AND ALONZO L. THORTON, SET 1/4 POST.

REFERENCES:

W. PINE 13" N84°E 32 LINKS (21.12 FT), Y. BIRCH 7" S43°W 39 LINKS (25.74 FT)

RECORDS ON FILE AT THE MN HISTORICAL SOCIETY IN ST. PAUL AND COPIES FILED WITH
CASS COUNTY HIGHWAY DEPARTMENT/ SURVEYOR'S OFFICE (CCHD/SO).

1937 CCC, WASHBURN LAKE BOOK #2 PG. 7, SET APPROX. ¼ CORNER. WASHBURN LAKE
FORESTRY STATION

1957 E.M. WILSIE, HUBBARD COUNTY SURVEYOR, ON HIS PLAT INDICATES AN IRON AT THE
CORNER LOCATION. BANNISTER'S LAKE LEAVITT ADDITION DOCUMENT 158044 COUNTY
RECORDER'S OFFICE

11/2013 TERRY L. FREEMAN, LIC. NO. 21367, NORTHERN ENGINEERING & CONSULTING, INC., ON
HIS CERTIFICATE OF SURVEY, INDICATES A FOUND IRON MONUMENT SURVEY
RECORD NO. 7625 CCHD/SO

12/30/2013 TERRY L. FREEMAN, LIC. NO. 21367, NORTHERN ENGINEERING & CONSULTING, INC.,
FILES A CERTIFICATE OF LOCATION WHICH INDICATES A ½" IRON PIPE UP 2", MARKING
THE CORNER LOCATION. REFERENCES: 0.2 NE OF METAL 'T' POST.

8" ASH S75°W 13.91 , 6" ASH S20°E 11.36 CERTIFICATE OF LOCATION OF
GOVERNMENT CORNER DOC A000599328 COUNTY RECORDER'S OFFICE

2017 SURVEY TECHNICIANS TRAVIS BARE AND JEFF SARKELA, NORTHWOODS SURVEYING,
FOUND A ½ " DIA. IRON PIPE MONUMENT. THE MONUMENT WAS ACCEPTED
AS MARKING THE CORNER LOCATION. BT TAGS WERE PLACED ON REFERENCES AS
SHOWN ON PAGE 1