



A000634996

OFFICE OF THE COUNTY RECORDER  
CASS COUNTY, MINNESOTA  
CERTIFIED, FILED, AND/OR  
RECORDED ON

10/5/2017 11:08:41 AM

AS DOC #: A000634996

PAGES: 2

REC FEES: 0.00

KATHRYN M. NORBY  
CASS COUNTY RECORDER

BY MW Dep TX#: 141694

INDEX NO. S.6-21.0

# CERTIFICATE OF LOCATION OF GOVERNMENT CORNER

MC #8 Corner of Section 26, Township 139 N., Range 26 W., 5TH P.M., State of Minnesota, County of Cass

At the corner location shown on the sketch:

On 7/18/17 found a 2" IRON PIPE, NORTH SIDE OF LAWRENCE LAKE  
Date

left monument as found       lowered monument       removed monument (explain)

On \_\_\_\_\_ placed a \_\_\_\_\_  
Date

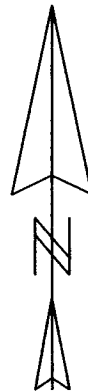
## SKETCH OF REFERENCE TIES

Tie Distances are measured to the spikes.

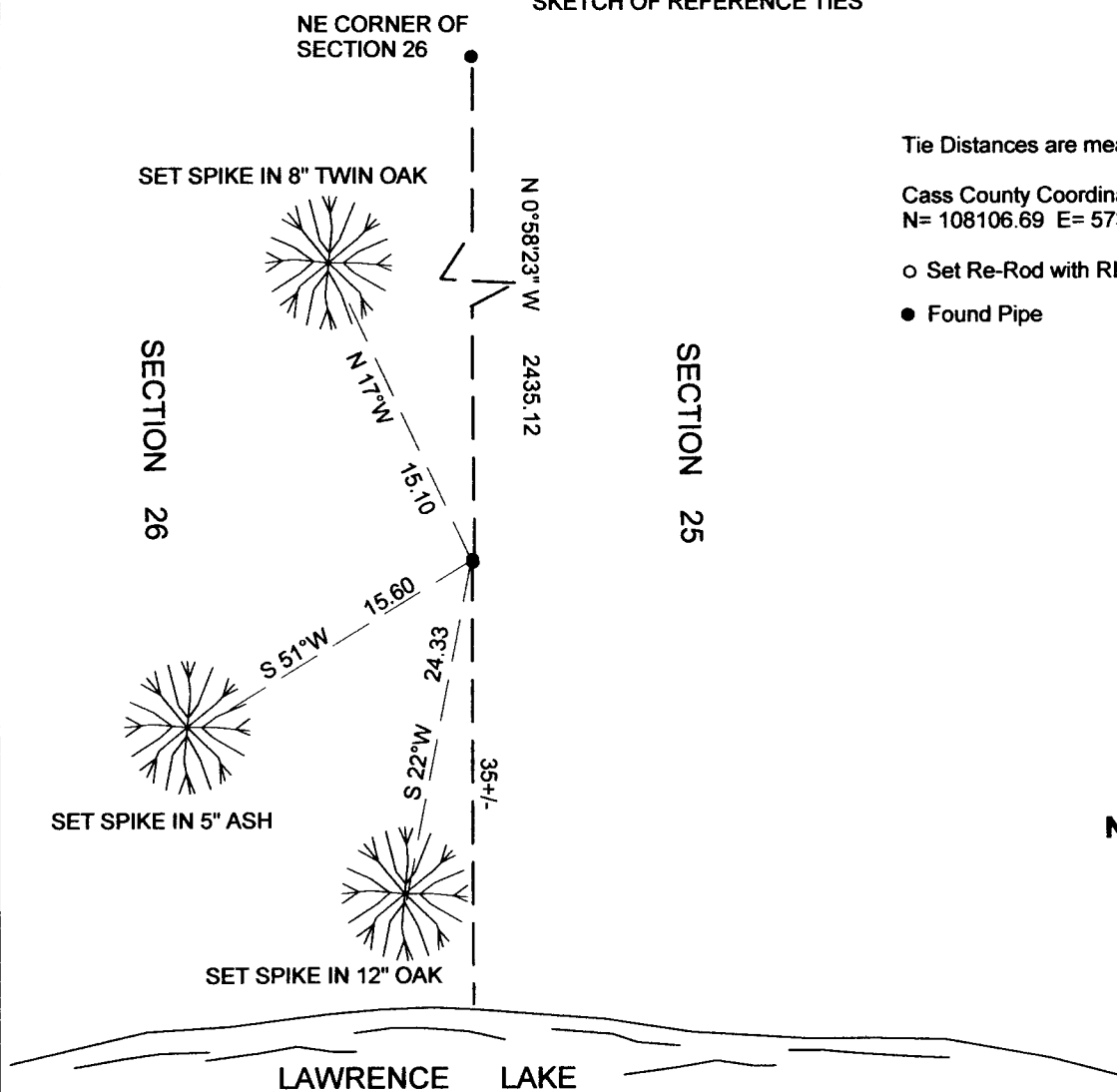
Cass County Coordinate System (North Zone)  
N= 108106.69 E= 573540.16

○ Set Re-Rod with RLS cap No. 17774

● Found Pipe



NOT TO SCALE



I hereby certify that this document and the data contained herein was prepared by me or under my direct supervision.

Marvin R. Kohout      9/27/2017  
Marvin R. Kohout      Date

License No. 17774

Land surveyor

Statement of evidence relative to this corner location is on back of page.





**INDEX NO. S.6-21.0**

**STATEMENT OF EVIDENCE**

**MC #8 (SOUTH OF NORTHEAST CORNER) OF SECTION 26, TOWNSHIP 139 N., RANGE 26 W., 5<sup>TH</sup> P.M.**

1863 DEPUTY SURVEYORS GATES A. JOHNSON, AND ALONZO L. THORTON, SET MC #8 POST.

REFERENCES:

W. PINE 5" N80°E 15 LINKS (9.9 FT), W. PINE 6" N45°W 9 LINKS (5.9 FT)

RECORDS ON FILE AT THE MN HISTORICAL SOCIETY IN ST. PAUL AND COPIES FILED WITH CASS COUNTY HIGHWAY DEPARTMENT/ SURVEYOR'S OFFICE (CCHD/SO).

1916 ELMER B. HORST, LIC. NO. 376, COUNTY SURVEYOR, SET 2"X48" BOILER TUBE FROM THE STUB OF THE NE BEARING TREE AND THE STUMP OF THE NW BEARING TREE. NEW

REFERENCES: N. PINE 10" N73W 23.00 FT N. PINE 10" N34-30E 14.50 FT

MC #8 TO THE NE COR WAS 2434.20 FT COUNTY RECORD BOOK 'B' PG. 191-194.

CCHD/SO

1922 ELMER B. HORST ON SKETCH INDICATES MC #8 LIES 2434.2 SOUTH OF THE NE CORNER

CURO BOOK 103 PG 4 CCHD/SO

1927 J.P. LARSEN, LIC. NO. 143, J.P. LARSEN CO., ON THE PLAT OF TINGDALE BROS.'

ROOSEVELT TRAILS INDICATES AN IRON MONUMENT AT THE MC LOCATION.

DOCUMENT NO. 87084 COUNTY RECORDER'S OFFICE

2000 JEFFERY W. MILLER, LIC. NO. 13336, WIDSETH, SMITH, NOLTING, ON HIS CERTIFICATES

OF SURVEY INDICATES A FOUND IRON MONUMENT. SURVEY RECORD NO. 531

AND NO. 5386 CCHD/SO

2017 SURVEY TECHNICIANS TRAVIS BARE AND JEFF SARKELA, NORTHWOODS SURVEYING,

FOUND A 2"DIA. IRON PIPE MONUMENT. THE MONUMENT WAS ACCEPTED

AS MARKING THE CORNER LOCATION. BT TAGS WERE PLACED ON REFERENCES AS

SHOWN ON PAGE 1