

Page 1 of 2 A000633944



A000633944

OFFICE OF THE COUNTY RECORDER
CASS COUNTY, MINNESOTA
CERTIFIED, FILED, AND/OR
RECORDED ON

9/31/2017 9:58:34 AM

AS DOC #: A000633944

PAGES: 2

REC FEES: 0.00

KATHRYN M. NORBY
CASS COUNTY RECORDER

BY SR _____ Dep TX#: 140858

Twp. 135 Rge. 30 Index No. L.0-09.0

CERTIFICATE OF LOCATION OF GOVERNMENT CORNER

East Quarter Corner of Section 17 Township 135 N, Range 30 W, 5th P.M.

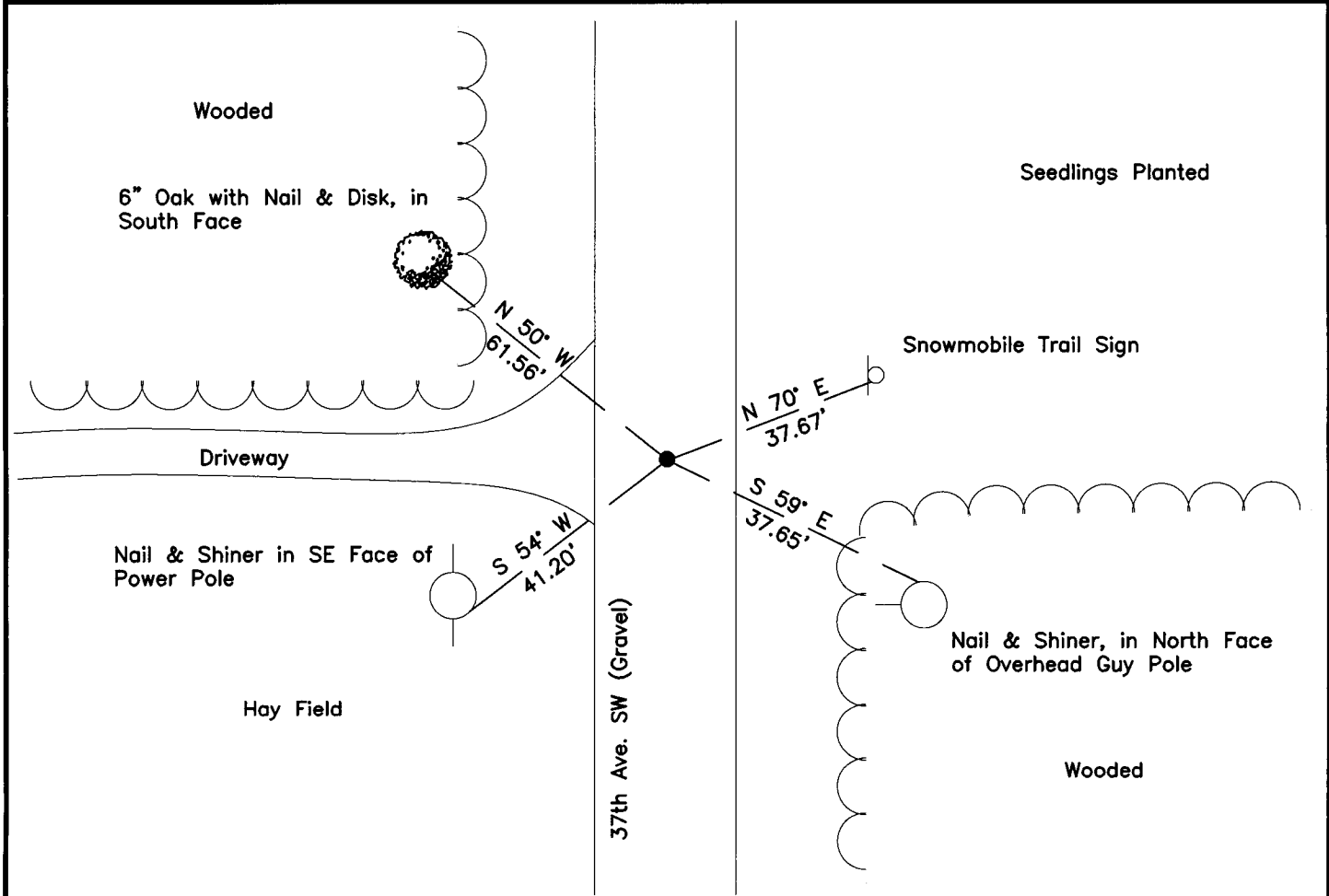
STATE OF MINNESOTA, COUNTY OF CASS

On 9/15/2016, found a(n): 1 1/2" inside diameter iron pipe in the centerline of 37th Ave. SW, 1.4 feet below the road surface

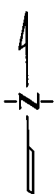
left monument as found lowered monument removed monument (explain) raised monument

On _____, placed a(n): _____

See Statement of Evidence relative to this corner location is on the back of this page.



"SKETCH OF REFERENCE TIES" (not to scale - bearings are magnetic)



Ties are measured to center of monument unless otherwise noted.

UNITS = Metric English

Cass County Coordinates (South)

Northing: 228032.158

Easting: 497685.816

NAD 83/2011 Adjustment.

Obtained by RTK GPS observations.

I hereby certify that this survey, plan, or report was prepared by me or under my direct supervision, and that I am a duly Licensed Land Surveyor under the laws of the State of Minnesota.

Jacob Martin Backowski
signature

8-23-17
date

Jacob Martin Backowski, Minnesota License No. 51693

Index No. L.0-09.0Statement of Evidence

East Quarter Corner of Section 17, Twp. 135 N., Rge. 30 W.

1869 T.B. Walker, GLO Deputy Surveyor, according to the notes of the Subdivision of Twp. 135 N., Rge. 30 W., set a post and bearing trees as follows:

6"	Pine	N 60° W	15 links
7"	Pine	S 45° E	10 links

Information on file with the Minnesota Historical Society and copies filed with the CCHD/SO

1904 Home Brook Township, Road Surveyor's Report by W. H. Hallett shows survey of road along the east line of Section 17 Twp. 135 N., Rge. 30 W.

Information on file with the CCHD/SO

1914 Cass County Ditch Book 22, Page 31 shows an Iron Pipe at this corner. The distance to the Northeast Corner of Section 20 is 2650.3' and the stationing to the Northeast Corner of Section 17 is 2607.8'

Information on file with the CCHD/SO

1917? Cass County Surveyor's Record Book B, Page 472, Plat of State Rural Highway No. shows stationing at this corner. The distance to the Northeast Corner of Section 17 is 2607.8' and to the Northeast Corner of Section 20 is 2650.3'.

1920 Lincoln Mackey surveyed the Rainbow Trail through this township. He found an iron monument at this corner. He measured 5224.5 to the East Quarter Corner of Section 16 and 2648.7 to the Northeast Corner of Section 20.

Information on file with the CCHD/SO

1998 DNR Survey Crew found a 1 ½" iron pipe, down 1.6' in the centerline of a north-south gravel road. The iron pipe is in line with the centerline of and old trail east. The iron was accepted as marking the obliterated location of the corner a spike was place over the iron pipe, down 0.2 feet. Distances were measured to the following corners:

NE Corner Section 20	– S 00°55'55" W	2649.77'
NE Corner Section 17	– N 00°12'01" W	2612.57'
EQ Corner Section 16	– S 89°36'00" E	5226.04'

Information on file with CCHD/SO and CC Recorders office

2009 Certification of Location of Government Corner filed as document number A000549047, certified by John D. Walker, MN License No. 16098.

Information on file with CCHD/SO and CC Recorders office

2016 KLJ completed a search of the area and recovered the 1 ½" Iron Pipe 1.4 feet below the surface of the road. The spike reference in the 1998 DNR entry was not recovered. The 1 ½" Iron Pipe was accepted as the corner location of the East Quarter Corner of Section 17, Twp. 135 N., Rge. 30 W. and set reference ties as follows:

Snowmobile Trail Sign	N 70° E	37.67 feet
Overhead Guy Pole	S 59° E	37.65 feet
Power Pole	S 54° W	41.20 feet
6" Oak	N 50° W	61.56 feet