



A000633943

OFFICE OF THE COUNTY RECORDER
CASS COUNTY, MINNESOTA
CERTIFIED, FILED, AND/OR
RECORDED ON

8/31/2017 9:58:33 AM

AS DOC #: A000633943

PAGES: 2

REC FEES: 0.00

KATHRYN M. NORBY
CASS COUNTY RECORDER

BY SR Dep TX#: 140858

Page 1 of 2 A000633943

Twp. 135 Rge. 30 Index No. L.0-05.0

CERTIFICATE OF LOCATION OF GOVERNMENT CORNER

East Quarter Corner of Section 18 Township 135 N, Range 30 W, 5th P.M.

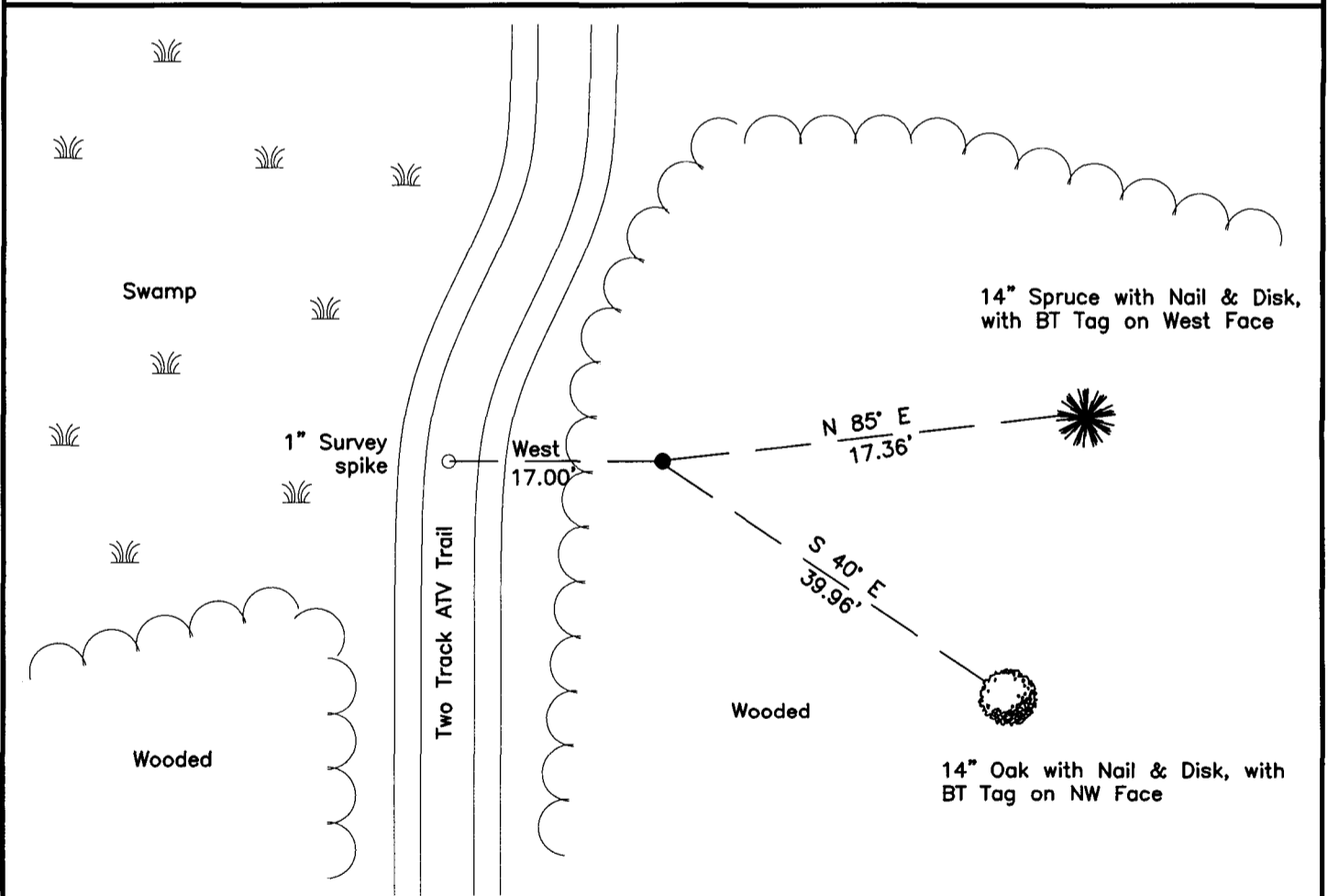
STATE OF MINNESOTA, COUNTY OF CASS

On _____, found a(n): _____

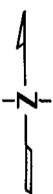
left monument as found lowered monument removed monument (explain) raised monument

On 9/15/2016, placed a(n): 5/8" x 24" Rebar with a Yellow Plastic Cap stamped "BACKOWSKI PLS 51693" flush with ground surface

See Statement of Evidence relative to this corner location is on the back of this page.



"SKETCH OF REFERENCE TIES" (not to scale - bearings are magnetic)



Ties are measured to center of monument unless otherwise noted.

UNITS = Metric English

Cass County Coordinates (South)

Northing: 227845.707

Easting: 492386.690

NAD 83/2011 Adjustment.

Obtained by RTK GPS observations.

I hereby certify that this survey, plan, or report was prepared by me or under my direct supervision, and that I am a duly Licensed Land Surveyor under the laws of the State of Minnesota.

signature

8-23-17
date

Jacob Martin Backowski, Minnesota License No. 51693



Index No. L.0-05.0

Statement of Evidence

East Quarter Corner of Section 18, Twp. 135 N., Rge. 30 W.

1869 T.B. Walker, GLO Deputy Surveyor, according to the notes of the Subdivision of Twp. 135 N., Rge. 30 W., set a post and bearing trees as follows:

8" Birch S 14° W 60 links

10" Pine S 76° E 67 links

Information on file with the Minnesota Historical Society and copies filed with the CCHD/SO

1913 Home Brook Township, Final Road order, states: At the southeast corner of the Northeast Quarter of Section 18 Twp 135 Rge 30. Thence north one half mile to the corner Sections 7, 8, 17 & 18.

Information on file with the CCHD/SO

1913 Home Brook Township, Final Road order, states: At the quarter stake between Sections 17 & 18 T 135 R 30 running one half mile to the south to the corner of Sections 17, 18, 19 & 20.

Information on file with the CCHD/SO

2016 KLJ completed a search of the area no evidence of the corner was recovered. Corner was set using lost single proportionate measurement between the Certified Corner at the Northeast Corner of Section 18, Twp. 135 N., Rge. 30 W. and the Certified Corner at the Northeast Corner of Section 19, Twp. 135 N., Rge. 30 W. Set a 5/8" rebar with a yellow plastic cap stamped "BACKOWSKI PLS 51693" flush with the ground surface and set reference ties as follows:

14" Spruce N 85° E 17.36 feet

14" Oak S 40° E 39.96 feet

1" Survey Spike West 17.00 feet