



A000633942

OFFICE OF THE COUNTY RECORDER  
CASS COUNTY, MINNESOTA  
CERTIFIED, FILED, AND/OR  
RECORDED ON

8/31/2017 9:58:32 AM

AS DOC #: A000633942

PAGES: 2

REC FEES: 0.00

KATHRYN M. NORBY  
CASS COUNTY RECORDER

BY SR \_\_\_\_\_ Dep TX#: 140858

Page 1 of 2  
A000633942

Twp. 135 Rge. 30 Index No. J.0-07.0

# CERTIFICATE OF LOCATION OF GOVERNMENT CORNER

North Quarter Corner of Section 17 Township 135 N , Range 30 W , 5th P.M.

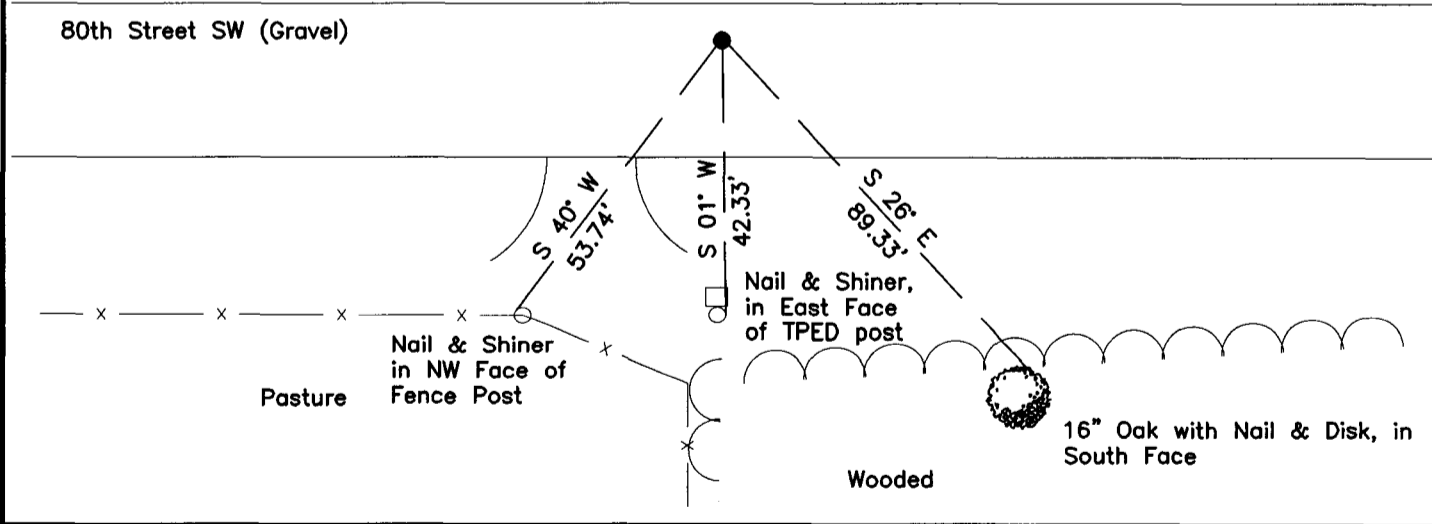
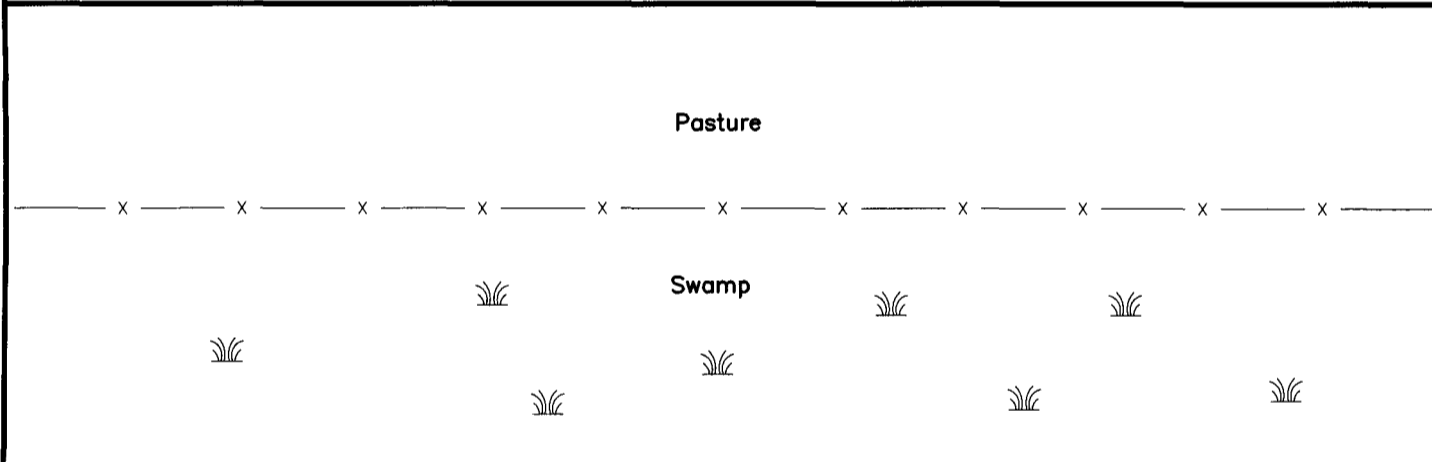
STATE OF MINNESOTA, COUNTY OF CASS

On \_\_\_\_\_, found a(n): \_\_\_\_\_

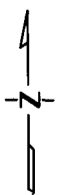
left monument as found       lowered monument       removed monument (explain)       raised monument

On 9/15/2016, placed a(n): 5/8" x 24" Rebar with a Yellow Plastic Cap stamped "BACKOWSKI PLS 51693" 0.3' below the surface of the gravel road.

See Statement of Evidence relative to this corner location is on the back of this page.



## "SKETCH OF REFERENCE TIES" (not to scale - bearings are magnetic)



Ties are measured to center of monument unless otherwise noted.

UNITS =  Metric  English

Cass County Coordinates (South)

Northing: 230562.919

Easting: 495057.756

NAD 83/2011 Adjustment.

Obtained by RTK GPS observations.

I hereby certify that this survey, plan, or report was prepared by me or under my direct supervision, and that I am a duly Licensed Land Surveyor under the laws of the State of Minnesota.

signature

8-23-17  
date

Jacob Martin Backowski, Minnesota License No. 51693



**Index No. J.0-07.0**

Statement of Evidence

North Quarter Corner of Section 17, Twp. 135 N., Rge. 30 W.

1869 T.B. Walker, GLO Deputy Surveyor, according to the notes of the Subdivision of Twp. 135 N., Rge. 30 W., set a post and bearing trees as follows:

Aspen N 80° E 40 links

Pine S 89 ¾° E 90 links

Information on file with the Minnesota Historical Society and copies filed with the CCHD/SO

1913 Home Brook Township, Final Road order, states: At the southeast corner of the Northeast Quarter of Section 18 Twp 135 Rge 30. Thence north one half mile to the corner Sections 7, 8, 17 & 18. Thence East one mile terminating at the corner of Sections 8, 9, 16 & 17.

Information on file with the CCHD/SO

2016 KLJ completed a search of the area no evidence of the corner was recovered. Corner was set using lost single proportionate measurement between the Certified Corner at the Northeast Corner of Section 17, Twp. 135 N., Rge. 30 W. and the Certified Corner at the Northeast Corner of Section 18, Twp. 135 N., Rge. 30 W. Set a 5/8" rebar with a yellow plastic cap stamped "BACKOWSKI PLS 51693" 0.3' below the surface of the gravel road and set reference ties as follows:

16" Oak S 26° E 83.33 feet

Tele. Ped. Post S 01° W 42.33 feet

Fence Post S 40° W 53.74 feet