



A000633941

OFFICE OF THE COUNTY RECORDER  
CASS COUNTY, MINNESOTA  
CERTIFIED, FILED, AND/OR  
RECORDED ON

8/31/2017 9:58:31 AM

AS DOC #: A000633941

PAGES: 2

REC FEES: 0.00

KATHRYN M. NORBY  
CASS COUNTY RECORDER

BY SR \_\_\_\_\_ Dep TX#: 140858

Page 1 of 2 A000633941

Twp 140 Rge 30 Index No. X.0-21.0

### CERTIFICATE OF LOCATION OF GOVERNMENT CORNER

East Quarter corner of Section 35, Township 140 N., Range 30 W., 5th P.M.  
State of Minnesota, County of Cass

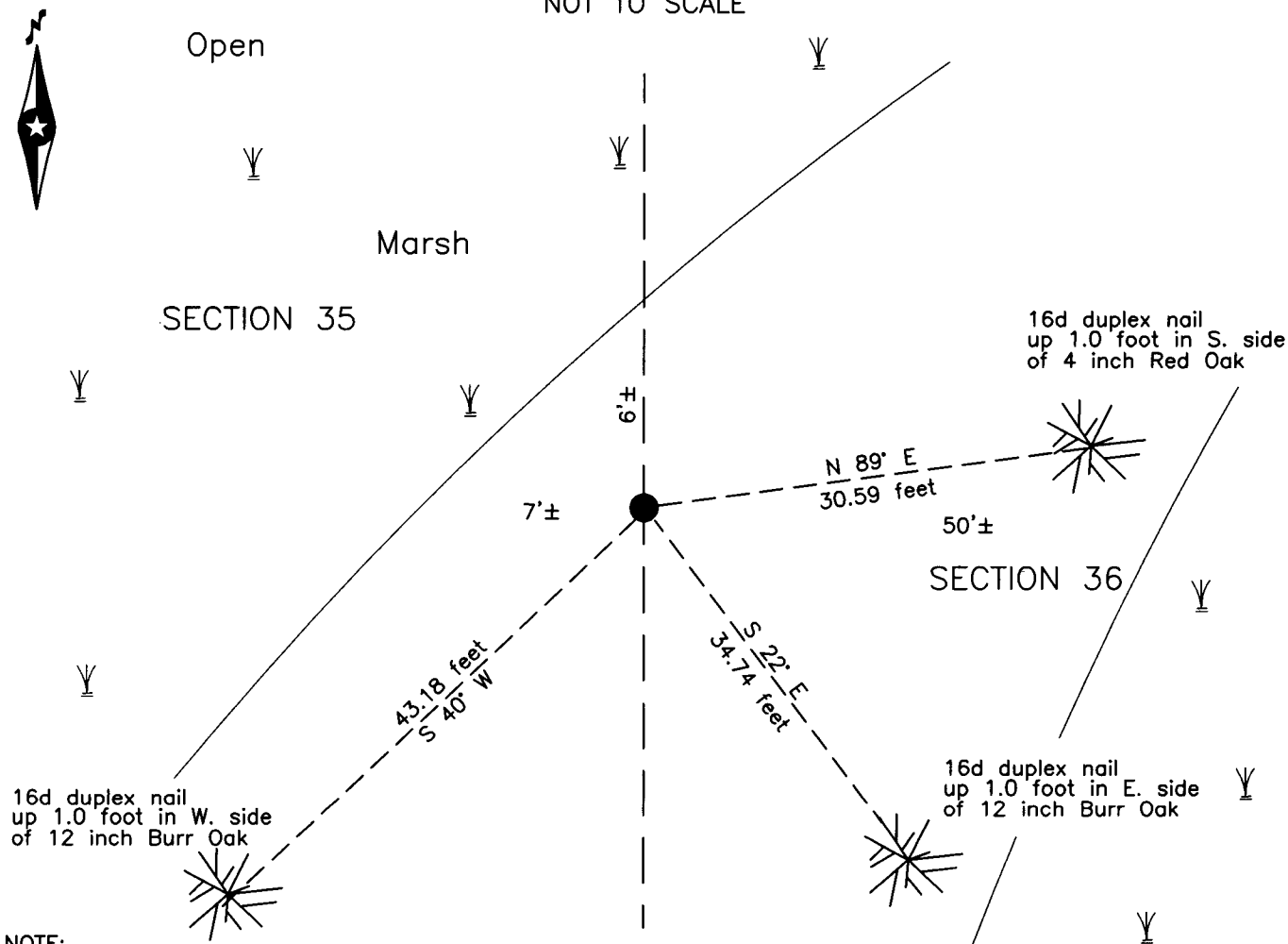
At the corner location shown on the sketch:

On 1 Aug 2017 found a 2 inch outside diameter iron pipe, up 1.5 feet,  
on point of land in open Marsh.

left monument as found     lowered monument     removed monument (explain)

On \_\_\_\_\_ placed \_\_\_\_\_

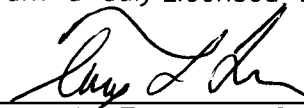
SKETCH OF REFERENCE TIES  
NOT TO SCALE



NOTE:  
All bearings are true

Statement of evidence relative to this corner location is on the back of this page.

I hereby certify that this survey, plan or report was prepared by me or under my direct supervision and that I am a duly Licensed Land Surveyor under the laws of the State of Minnesota.

  
Terry L. Freeman, Cass County Surveyor  
Date 8/30/17 MN License No. 21367



**Index No. X.0-21.0**

Statement of Evidence

**East Quarter corner of Section 35, Township 140 North, Range 30 West, 5th Principal Meridian.**

- Sept. 1865 T.B. Walker, General Land Office (GLO) Deputy Surveyor in the notes of the subdivision of Township 140 North, Range 30 West, set a post for the original corner and referenced it as follows:  
 4" Aspen            N 85 1/2° W    25 links (16.50 feet)    5" Aspen            S 77 1/2° E    22 links (14.52 feet)  
 Said records are on file with the Minnesota Historical Society, St. Paul, Minnesota, copies are filed with the Cass County Highway Department, Surveyor's Office (CCHD/SO).
  
- Oct. 1914 H.S. Todd, Survey for Birch Lake Twp. Curo Book 73, pages 76 and 80, on file in the CCHD/SO, indicates that 2640 goes N. 30.90 feet and E. 3.90. and states "1/4 on East side of Section 35-140-30 (previously set by Me.) where we set in a 2 x 48 in. galvanized iron pipe for corner". and witnesses as follows:  
 6" Popel            N 85° W                    28.85 feet            12" Dead Pop.    N 45° E                    62.10 feet
  
- March 1916 E.B. Horst, LS 376, Survey Record No. 355, Book B, page 554 and Curo Book 61, pages 136 and 138, on file in the CCHD/SO, states "We go to I.M. at 1/4 cor on W side of sec 36, 140-30 and start random line E". Page 138 he begins at corner and chains east.
  
- Aug. 2017 B. Hippen, technician, records of the CCHD/SO, found a 2 inch outside diameter iron pipe, up 1.5 feet, 4 feet, more or less, south of swamp edge and 7 feet, more or less, east of swamp edge, 71 feet, more or less, north of fence and witnessed as follows:  
 4" R. Oak            N 89° E                    30.59 feet                                    12" B. Oak            S 22° E                    34.74 feet  
 12" B. Oak            S 40° W                    43.18 feet

The monument, recovered and established references for the position are shown on the face of this document.

**Analysis of the recovered record data, field evidence and survey measurements, indicates that the monument recovered by CCHD/SO in 2017 is the accepted location of this corner.**

**County Coordinates (Cass County North)**

**Northing 135157.38**

**Easting 447064.28**