



A000633331

OFFICE OF THE COUNTY RECORDER
CASS COUNTY, MINNESOTA
CERTIFIED, FILED, AND/OR
RECORDED ON

8/10/2017 11:11:35 AM

AS DOC #: A000633331

PAGES: 2

REC FEES: 0.00

KATHRYN M. NORBY
CASS COUNTY RECORDER

BY SR _____ Dep TX#: 140364

Twp 136 Rge 30 Index No. R.0-05.0

CERTIFICATE OF LOCATION OF GOVERNMENT CORNER

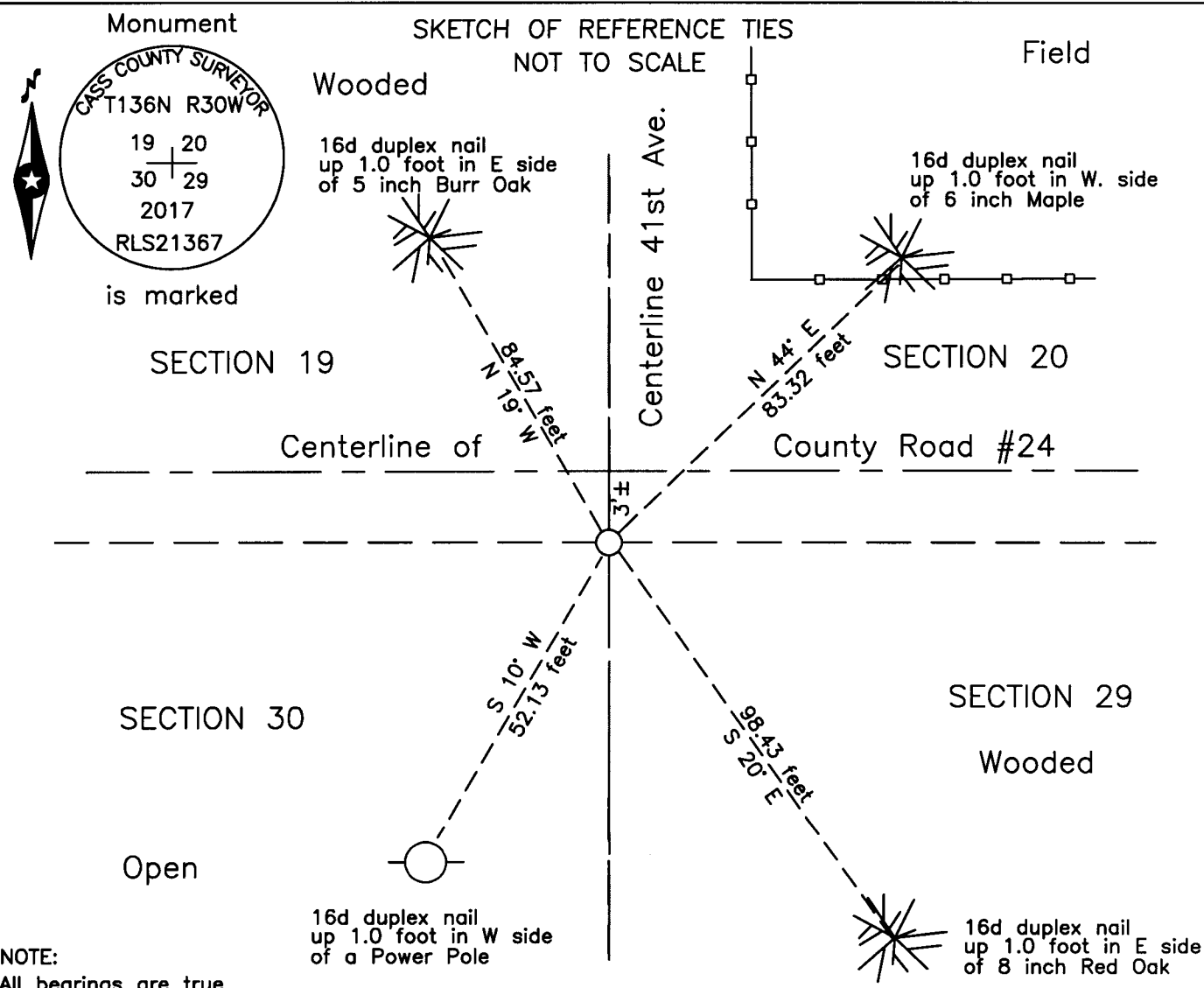
Northeast corner of Section 30, Township 136 N., Range 30 W., 5th P.M.
State of Minnesota, County of Cass

At the corner location shown on the sketch:

On 19 July 2016 found a PK nail, 2 feet±, south of centerline of CSAH #24.

left monument as found lowered monument removed monument (explain)

On 16 June 2017 placed an 1 inch by 18 inch aluminum tube with aluminum cap,
down 0.05 foot, 3 feet± south of new centerline of CSAH #24.



Statement of evidence relative to this corner location is on the back of this page.

I hereby certify that this survey, plan or report was prepared by me or under my direct supervision and that I am a duly Licensed Land Surveyor under the laws of the State of Minnesota.

Terry L. Freeman, Cass County Surveyor
Date 8/9/17 MN License No. 21367

Page 1 of 2 A000633331



Index No. R.0-05.0

Statement of Evidence

Northeast corner of Section 30, Township 136 North, Range 30 West, 5th Principal Meridian.

Aug. 1870 R. Cronk, General Land Office (GLO) Deputy Surveyor in the notes of the subdivision of Township 136 North, Range 30 West, set a post for the original corner and referenced it as follows:
10" W. Birch S 50° W 30 links (19.80 feet) 7" Aspen S 71° E 30 links (19.80 feet)
4" W. Birch N 43° W 40 links (26.40 feet) 8" Aspen N 60° E 35 links (23.10 feet)
Said records are on file with the Minnesota Historical Society, St. Paul, Minnesota, copies are filed with the Cass County Highway Department, Surveyor's Office (CCHD/SO).

Circa 1898 J.M. Canfield. Cass Co. Surveyor, Survey of Stony Brook Road, Road Calendar A, page 68, on file in the CCHD/SO, indicates position for the subject corner

Dec. 1898 J.M. Canfield. Cass Co. Surveyor, Survey of Pine River Road, Road Calendar A, page 80 and Road Calendar B, page 20, on file in the CCHD/SO, indicates position for the subject corner

May 1911 W.H. Luffman, surveyor. Maple Township Road Order, Ferguson's Cartway, on file at the CCHD/SO, states "AP. 1 is located and marked by an iron stake, on the sec: line between sec: 19 & 30 Twp: 136 R 30, and distant from the section corner between secs: 19, 20, 29 & 30 Twp: 136 R 30 a distance of Ch 20.041/2 (1322.97ft.) and on a course therefrom of N 89 1/2° W."

Aug. 1916 Maple Township Road Order, on file at the CCHD/SO, states" Beginning at the Southeast corner of section 19, Twp. 136, Range 30. Thence North on the section line.

March 1967 D. Cole, LS 1286, Cass County Highway Department (CCHD), S.A.P. 11-624-01, on file in the CCHD, Plan indicates corner at corner at P.I. Station 236+69.5, at intersection with Public Road to North and South and witnessed to as follows:
8" W. Oak SW 134.0 feet 5" Pop SE 102.0 feet
5" Birch SSW 133.2 feet

Nov. 2001 J. Nielsen, LS 11865, Certificate of Survey, copy on file in the CCHD/SO, indicates monument found, an accompanying worksheet indicates a PK.

Jan. 2004 J.D. Walker, LS 16098, Minnesota Department of Natural Resources, Stony Brook Fisheries Management Area, File FMA00508, copy on file in the CCHD/SO, found a P.K. nail, 2 feet, more or less, south of centerline of CSAH #24 on centerline of 41st Avenue.

July 2016 B. Hippen, technician, records of the CCHD/SO, found a PK(concrete) nail, 2 feet, more or less, south of centerline of CSAH #24, on centerline of 41st Avenue and witnessed as follows:
5" B. Oak N 19° W 84.57 feet 6" Maple N 44° E 83.32 feet
8" R. Oak S 20° E 98.43 feet Power Pole S 10° W 52.13 feet

June 2017 B. Hippen, technician, records of the CCHD/SO, set an aluminum Cass County monument in place of the PK(concrete) nail recovered in 2001 from witnesses.

The monument, recovered and established references for the position are shown on the face of this document.

Analysis of the recovered record data, field evidence and survey measurements, indicates that the monument set by the CCHD/SO in 2017 is the accepted location of this corner.

County Coordinates (Cass County South)

Northing 251666.54

Easting 492252.07