



A000632633

OFFICE OF THE COUNTY RECORDER  
CASS COUNTY, MINNESOTA  
CERTIFIED, FILED, AND/OR  
RECORDED ON

7/19/2017 11:05:31 AM

AS DOC #: A000632633

PAGES: 2

REC FEES: 0.00

KATHRYN M. NORBY  
CASS COUNTY RECORDER

BY SR \_\_\_\_\_ Dep TX#: 139850

Page 1 of 2 A000632633

INDEX NO. E.0-19.0

# CERTIFICATE OF LOCATION OF GOVERNMENT CORNER

N 1/4 Corner of Section 11, Township 134 N., Range 31 W., 5TH P.M., State of Minnesota, County of Cass

At the corner location shown on the sketch:

On 6/27/2017 found a TOPPLED 2" DIA. IRON MONUMENT WITH PLUMBER'S CAP PUNCH MARKED "1/4"

Date

DOWN 3.5 FEET. RAISED MONUMENT TO DEPTH OF 0.5 FEET

left monument as found

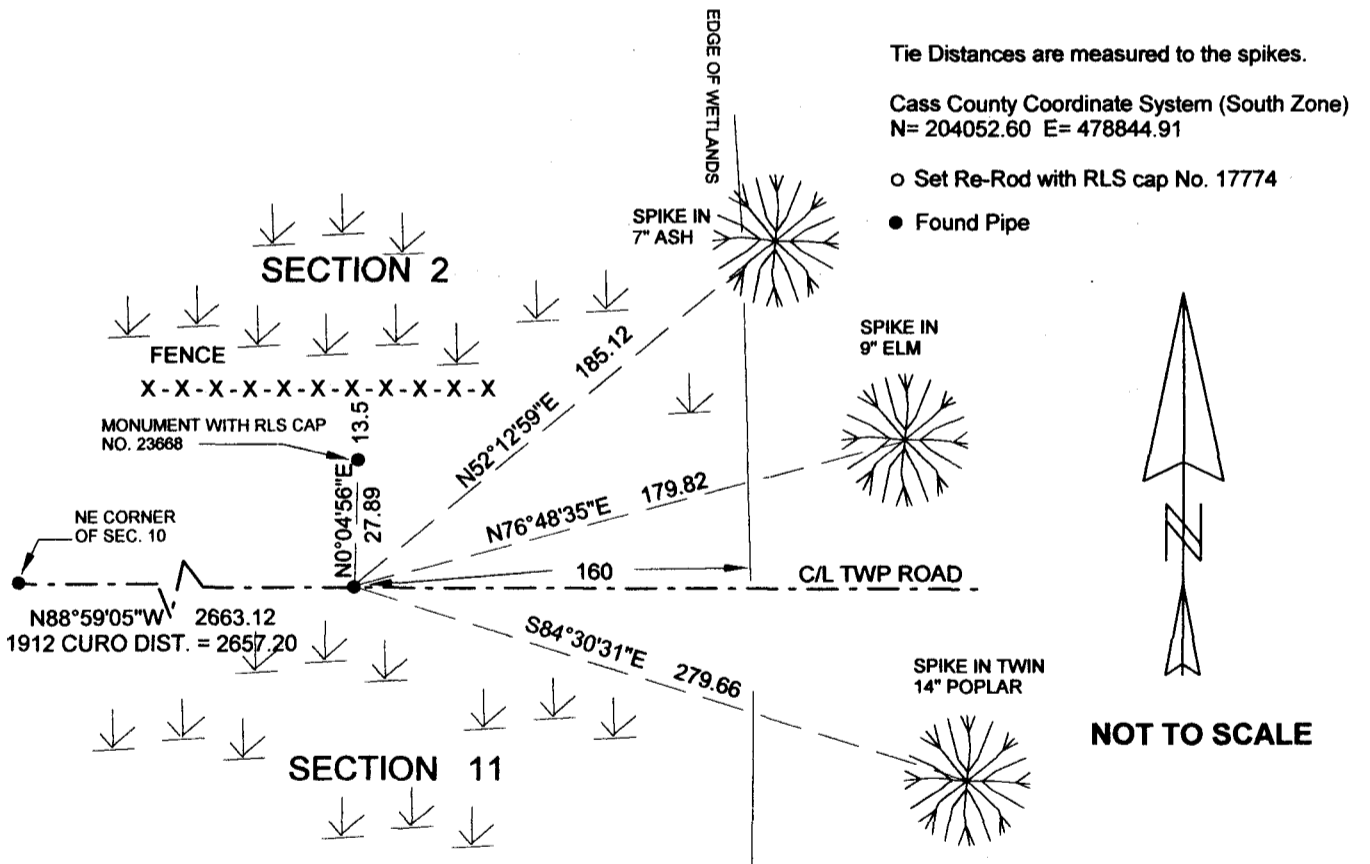
lowered monument

removed monument (explain)

On \_\_\_\_\_ placed a \_\_\_\_\_

Date

## SKETCH OF REFERENCE TIES



I hereby certify that this document and the data contained herein was prepared by me or under my direct supervision.

Marvin R. Kohout 7/12/2017  
Marvin R. Kohout Date

Statement of evidence relative to this corner location is on back of page.

License No. 17774

Land surveyor



**INDEX NO. E.0-19.0**

**STATEMENT OF EVIDENCE**

**NORTH 1/4 CORNER OF SECTION 11, TOWNSHIP 134 N., RANGE 31 W., 5<sup>TH</sup> P.M.**

- 1869 T.B. WALKER, DEPUTY GOVERNMENT SURVEYOR, SET A WOOD POST, REFERENCES:  
6" TAMARACK N20°E 5 LINKS (3.3 FT), 3" TAMARACK S10°E 72 LINKS (47.52 FT)  
RECORDS ON FILE AT THE MN HISTORICAL SOCIETY IN ST. PAUL AND COPIES FILED WITH  
CASS COUNTY HIGHWAY DEPARTMENT/ SURVEYOR'S OFFICE (CCHD/SO).
- 1912 JOHN CURO, LICENSE NO. 1428, COUNTY SURVEYOR, FOUND A STONE MONUMENT WITH 'X'  
UNDER THE CORDUROY ROAD, SET FROM OLD GOVERNMENT B.T'S BY MR. WHITELY, FORMER  
COUNTY SURVEYOR, ONE OLD B.T. ROOTS STILL IN PLACE. , COUNTY SURVEY RECORD BOOK 'A'  
PG. 473-477
- 2006 JAMES KRAMER, LIC. NO. 23668, OF KRAMER LEAS DELEO, ON HIS CERTIFICATE OF SURVEY  
SHOWS A COMPLETE SUBDIVISION OF SECTION 10 TWP.134 N., RGE 31 W. HE INDICATES HE  
SET A MONUMENT AT THE CORNER LOCATION. CERTIFICATE OF SURVEY NO. 8085 CCHD/SO
- 2007 JAMES KRAMER, LIC. NO. 23668, OF KRAMER LEAS DELEO, ON HIS CERTIFICATE OF SURVEY  
HAS A COMPLETE SUBDIVISION OF SECTION 2 TWP.134 N., RGE 31 W. HE INDICATES A  
FOUND MONUMENT AT THE CORNER LOCATION. CERTIFICATE OF SURVEY NO. 4007
- 2013 KRAMER REVISES CERTIFICATE NO. 4007 CERTIFICATE OF SURVEY NO. 6095 CCHD/SO
- 2017 MARVIN R. KOHOUT, LIC. NO. 17774, KOHOUT LAND SURVEYING, AND SURVEY TECHNICIANS  
TRAVIS BARE AND JEFF SARKELA, SEARCHED FOR THE MONUMENT SET IN 1912 UNDER THE  
CORDUROY ROAD. FOUND TOPPLED 2 INCH PIPE WITH PLUMBER'S CAP PUNCH MARKED "1/4"  
ON TOP OF A 20"X20" STONE. NO 'X' WAS VISIBLE ON THE STONE. ACCEPTED THE FOUND  
MONUMENT AS MARKING THE CORNER LOCATION. NEW REFERENCES AS SHOWN ON PAGE 1.