

Page 1 of 2 A000632437



A000632437

OFFICE OF THE COUNTY RECORDER
CASS COUNTY, MINNESOTA
CERTIFIED, FILED, AND/OR
RECORDED ON

7/13/2017 11:10:46 AM

AS DOC #: A000632437

PAGES: 2

REC FEES: 0.00

KATHRYN M. NORBY
CASS COUNTY RECORDER

BY KF Dep TX#: 139712

X

INDEX NO. N.0-15.0

CERTIFICATE OF LOCATION OF GOVERNMENT CORNER

N 1/4 Corner of Section 22, Township 135 N., Range 30 W., 5TH P.M., State of Minnesota, County of Cass

At the corner location shown on the sketch:

On 3/31/2017 found a 3/8" DIAMETER RE-ROD
Date

X left monument as found lowered monument removed monument (explain)

On _____ placed a _____
Date

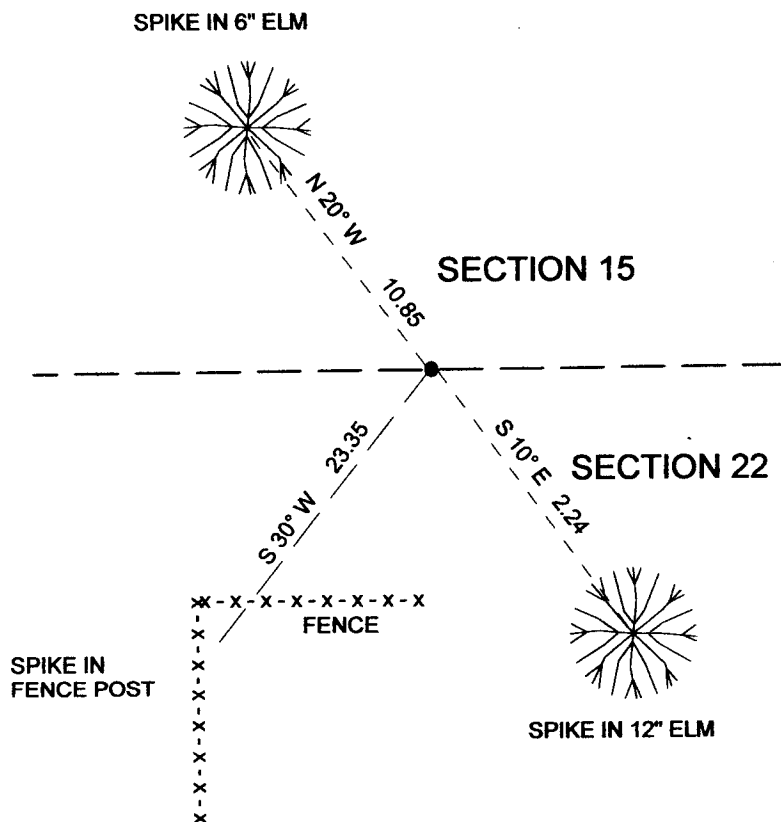
SKETCH OF REFERENCE TIES

Tie Distances are measured to the spikes.

Cass County Coordinate System (South Zone)
N= 225410.82 E= 505562.25

○ Set Re-Rod with RLS cap No. 17774

● Found Pipe



NOT TO SCALE
COMPASS BEARINGS

I hereby certify that this document and the data contained herein was prepared by me or under my direct supervision.

Marvin R Kohout 7/5/2017
Marvin R. Kohout Date

License No. 17774

Land surveyor

Statement of evidence relative to this corner location is on back of page.



INDEX NO. N.0-15.0

STATEMENT OF EVIDENCE

NORTH QUARTER CORNER OF SECTION 22, TOWNSHIP 135 N., RANGE 30 W., 5TH P.M.

- 1869 GOVERNMENT DEPUTY SURVEYOR THOMAS B. WALKER SET A WOOD POST, REFERENCES :
2" OAK N 4 W 19 LINKS (12.54 FT) 7" OAK S 33 W 13 LINKS (8.58 FT)
RECORDS ON FILE AT THE MN HISTORICAL SOCIETY IN ST. PAUL AND COPIES FILED WITH
CASS COUNTY HIGHWAY DEPARTMENT/ SURVEYOR'S OFFICE (CCHD/SO).
- ? CURO RECORDS HAS DRAWING INDICATING AN IRON MONUMENT MARKING THE CORNER
LOCATION CERTIFICATE OF SURVEY 4559 SURVEY RECORD 513 SURVEY RECORD BOOK D,
PAGE 85 CCHD/SO
- 1903 TOWNSHIP ROAD ORDER IN CCHD/SO SHOWS A SURVEY.
- 1922 BEN BEACH CURO BOOK 172A PG. 88 IN CCHD/SO SHOWS HE SET CEMENT MONUMENT
MIDWAY ON LINE.
- 2004 RANDY A. QUALE, LIC. NO. 42630, WIDSETH SMITH NOLTING, ON HIS CERTIFICATE OF
SURVEY, INDICATES HE FOUND AN IRON MONUMENT. CERTIFICATE OF SURVEY 2379
CCHD/SO
- 2007 JAMES KRAMER, LIC. NO. 23668, KRAMER LEAS DELEO, INDICATES IN HIS SUBDIVISION
SKETCH A POSITION FOR THE CORNER. CERTIFICATE OF SURVEY 3717 CCHD/SO
- 2010 CASS COUNTY LAND DEPARTMENT PERSONNEL FOUND CORNER,
- 2017 MARVIN R. KOHOUT, LIC. NO. 17774, KOHOUT LAND SURVEYING, AND SURVEY TECHNICIAN
TRAVIS BARE, NORTHWOODS SURVEYING, FOUND AN IRON MONUMENT AND ACCEPTED IT
AS MARKING THE CORNER LOCATION. REFERENCES AS SHOWN ON PAGE 1