



A000631632

OFFICE OF THE COUNTY RECORDER
CASS COUNTY, MINNESOTA
CERTIFIED, FILED, AND/OR
RECORDED ON

6/15/2017 10:34:30 AM

AS DOC #: A000631632

PAGES: 2

REC FEES: 0.00

KATHRYN M. NORBY
CASS COUNTY RECORDER

BY SR _____ Dep TX#: 139071

Page 1 of 2 A000631632

Twp 135 Rge 30 Index No. R.0-13.0

CERTIFICATE OF LOCATION OF GOVERNMENT CORNER

Northeast corner of Section 28, Township 135 N., Range 30 W., 5th P.M.
State of Minnesota, County of Cass

At the corner location shown on the sketch:

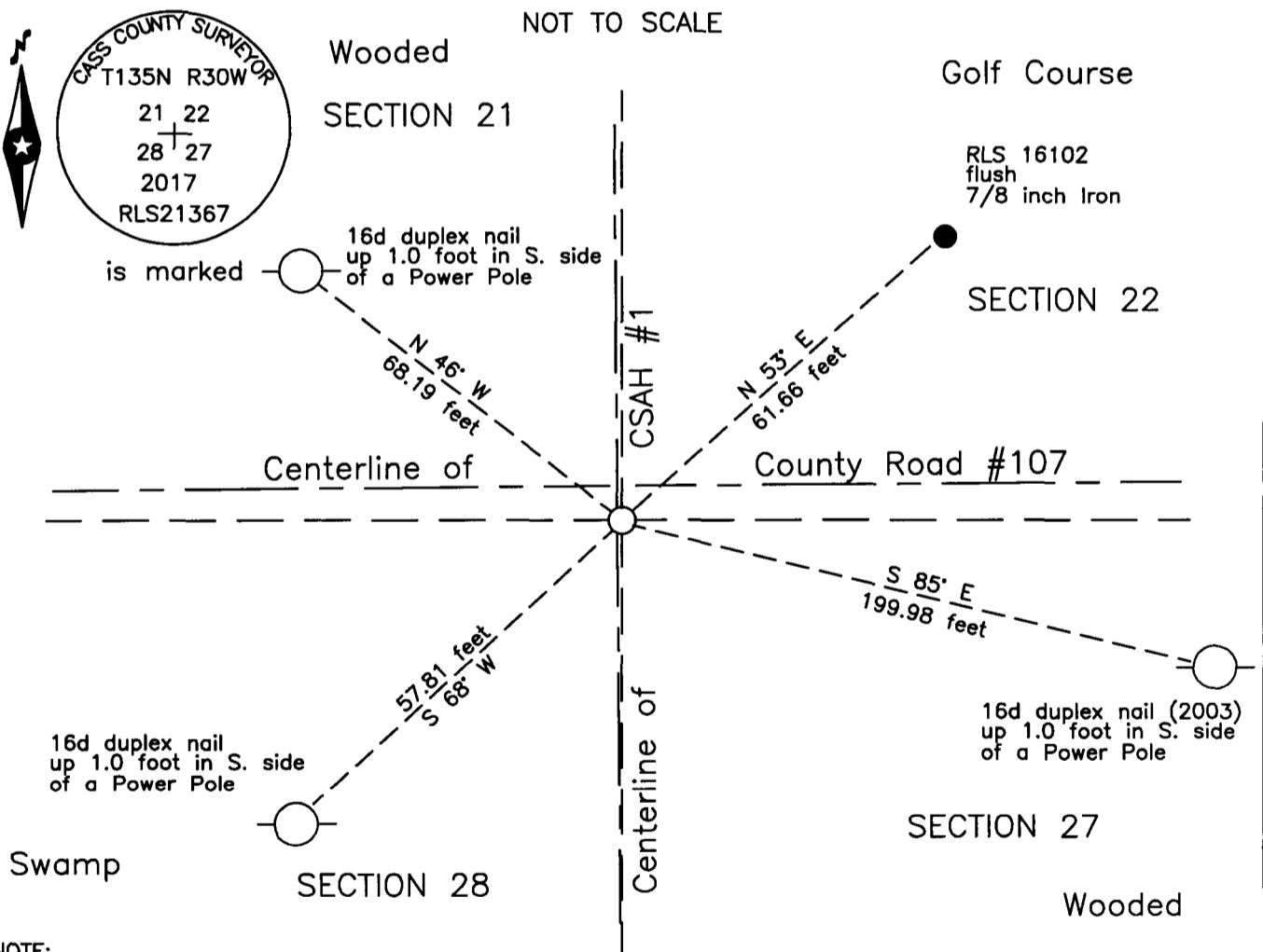
On 15 June 2003 found _____ a concrete nail, on centerline of CSAH #1.

left monument as found lowered monument removed monument (explain)

On 15 May 2017 placed a 1 inch by 30 inch aluminum tube with aluminum cap,
down 0.05 foot, on the new centerline CSAH #1.

Monument

SKETCH OF REFERENCE TIES
NOT TO SCALE



NOTE:
All bearings are true

Statement of evidence relative to this corner location is on the back of this page.

I hereby certify that this survey, plan or report was prepared by me or under my direct supervision and that I am a duly Licensed Land Surveyor under the laws of the State of Minnesota.

Terry L. Freeman
Terry L. Freeman, Cass County Surveyor
Date 6/14/17 MN License No. 21367



Index No. R.0-13.0

Statement of Evidence

Northeast corner of Section 28, Township 135 North, Range 30 West, 5th Principal Meridian.

- Oct. 1869 T.B. Walker, General Land Office (GLO) Deputy Surveyor, in the notes of the subdivision Township 135 North, Range 30 West, set a post for the original corner in his survey and referenced it as follows:

8" Birch	S 50° W	13 links (8.58 feet)	6" Spruce	N 52° W	8 links (5.28 feet)
4" Pine	N 53° E	15 links (9.90 feet)	10" Tam	S 79° E	26 links (17.16 feet)

 Said records are on file with the Minnesota Historical Society, St. Paul, Minnesota, copies are filed with the Cass County Highway Department, Surveyor's Office (CCHD/SO).
- Oct. 1903 W.H. Hallett, Surveyor's Report, Township Road Order on file at the Cass County Highway Department (CCHD), indicates a road on the East line of Sections 28 and 33.
- Feb. 1913 A.W. Moulster, LS 967, Deputy County Surveyor, S. R. #16, Book 23, Shelf 4, page 37, on file in the CCHD/SO, states "Beg. At N.E. cor. of Sec. 28 – this corner preserved by Frank Erickson."
- June 1914 C.D. Conzett, LS 428, Engineer, S. R. #1 Book 3, Shelf 4, page 7 and 14, on file in the CCHD/SO, indicates Sec. Cor. at station 105+67 is a "Stake".
- Nov. 1914 C.D. Conzett, LS 428, Engineer, S. R. #80 Book 22, Shelf 3, page 25, on file in the CCHD/SO, indicates Sec. Cor. at station 648+12.4 = 105+67 of old Survey.
- Jan. 1915 F.A. Donner, Deputy County Surveyor, Survey Book B, Record No. 250, page 59 and Curo Book 94, page 138, on file in the CCHD/SO, states "We find a 4 inch stake, previously set by Deputy County Surveyor A.W. Moulster for the true section corner." The bearing trees, listed as gone, do not agree with the GLO witnesses.
- July 1915 C.D. Conzett, LS 428, Engineer, S. R. #80 Book 10, Shelf 4, page 1, on file in the CCHD/SO, indicates Sec. Cor. at station 648+12.4 is a "Stake".
- Circa 1916 C.D. Conzett, LS 428, C.J. White, LS 1054 and C.J. Barke, Engineers, S. R. H. #80, Profile Book No. 1, Shelf 2, Book 1P, page 11A, on file in the CCHD/SO, indicates Sec. Cor. Stake at station 648+12.4.
- Circa 1916 C.D. Conzett, LS 428, C.J. White, LS 1054 and C.J. Barke, Engineers, Survey Record No. 331, Book B, page 473. State Rural Highway No. 80, on file in the CCHD/SO, indicates corner at station 648+12.4 = 105+67 of Plan 1136 S.R. No. 1.
- Dec. 1925 W. Schultz, Deputy County Surveyor, Survey Book D, Record No. 541, pages 167 and 168, on file in the CCHD/SO, states "Found old Oak post buried in Roadway at Road intersection. Placed short piece of 1" pipe over Post Top flush with Road surface." The East line of Section 28 is indicated to be 5304.6 feet.
- 1957 Cass County Highway Department (CCHD), S.A.P. 11-601-01, on file in the CCHD, Land Tie notes indicate corner at P.O.T. Station 589+48.6, at intersection with Public Road east and west.
- Feb. 1958 D. Cole, LS 1286, Cass County Engineer, C.S.A.H. No. 1, State Project 11-601-01, on file in the CCHD, indicates Corner assumed at road intersection station 589+48.6 and indicates the following witnesses:

P. Pole	SW	46.5 feet	Guy Pole	NE	58.6 feet
P. Pole	SE	63.5 feet			
- June 2003 B. Hippen, technician, records of the CCHD/SO, found a concrete nail, on centerline of C.S.A.H. No. 1 and on the centerline of County Road No. 107 and witnessed the same as follows:

Tel. Ped. Post	N 48° E	68.88 feet	18" C.M.P.	S 65° W	46.91 feet
Power Pole	S 85° E	199.78 feet	4" J. Pine	N 48° W	77.36 feet
- April 2004 R.A. Quale, LS 42630, Certificate of Survey, File No. 6923, on file in the Widseth Smith Nolting, Brainerd Office and a copy on file in the CCHD/SO, indicates a found iron monument.
- Nov. 2005 J. Kramer, LS 23668, Certificate of Survey, Project No. FINK0501, on file in the Kramer Leas Deleo, Baxter Office and a copy on file in the CCHD/SO, Indicates an iron monument found.
- April 2012 B. Hippen, technician and P. Swentkofske, CCHD equipment operator, records of the CCHD/SO, prior to reconstruction of CSAH #1, excavated a 10 foot east-west by 10 foot north-south area based on record dimensions. The dig was 3 feet deep to natural soil. A 60d spike, was recovered down 0.6 foot below the bituminous, no other evidence was recovered.
- May 2017 B. Hippen, technician, records of the CCHD/SO, set an aluminum Cass County monument in place of the concrete nail recovered in 2003, on the new centerline of CSAH #1 and witnessed as follows:

7/8" Iron Pipe	N 53° E	61.66 feet	Power Pole	S 85° E	199.98 feet
Power Pole	S 68° W	57.81 feet	Power Pole	N 46° W	68.19 feet

The monument, recovered and established references for the position are shown on the face of this document. **Analysis of the recovered record data, field evidence and survey measurements, indicates that the monument set by the CCHD/SO in 2017 is the accepted location of this corner.**

County Coordinates (Cass County South)
Northing 220083.57
Easting 503017.85