



A000630909

OFFICE OF THE COUNTY RECORDER  
CASS COUNTY, MINNESOTA  
CERTIFIED, FILED, AND/OR  
RECORDED ON

5/18/2017 11:02:51 AM

AS DOC #: A000630909

PAGES: 2

REC FEES: 0.00

KATHRYN M. NORBY  
CASS COUNTY RECORDER

BY SR \_\_\_\_\_ Dep TX#: 138511

Twp 141 Rge 28 Index No. R.0-13.0

# CERTIFICATE OF LOCATION OF GOVERNMENT CORNER

Northeast corner of Section 28, Township 141 N., Range 28 W., 5th P.M.  
State of Minnesota, County of Cass

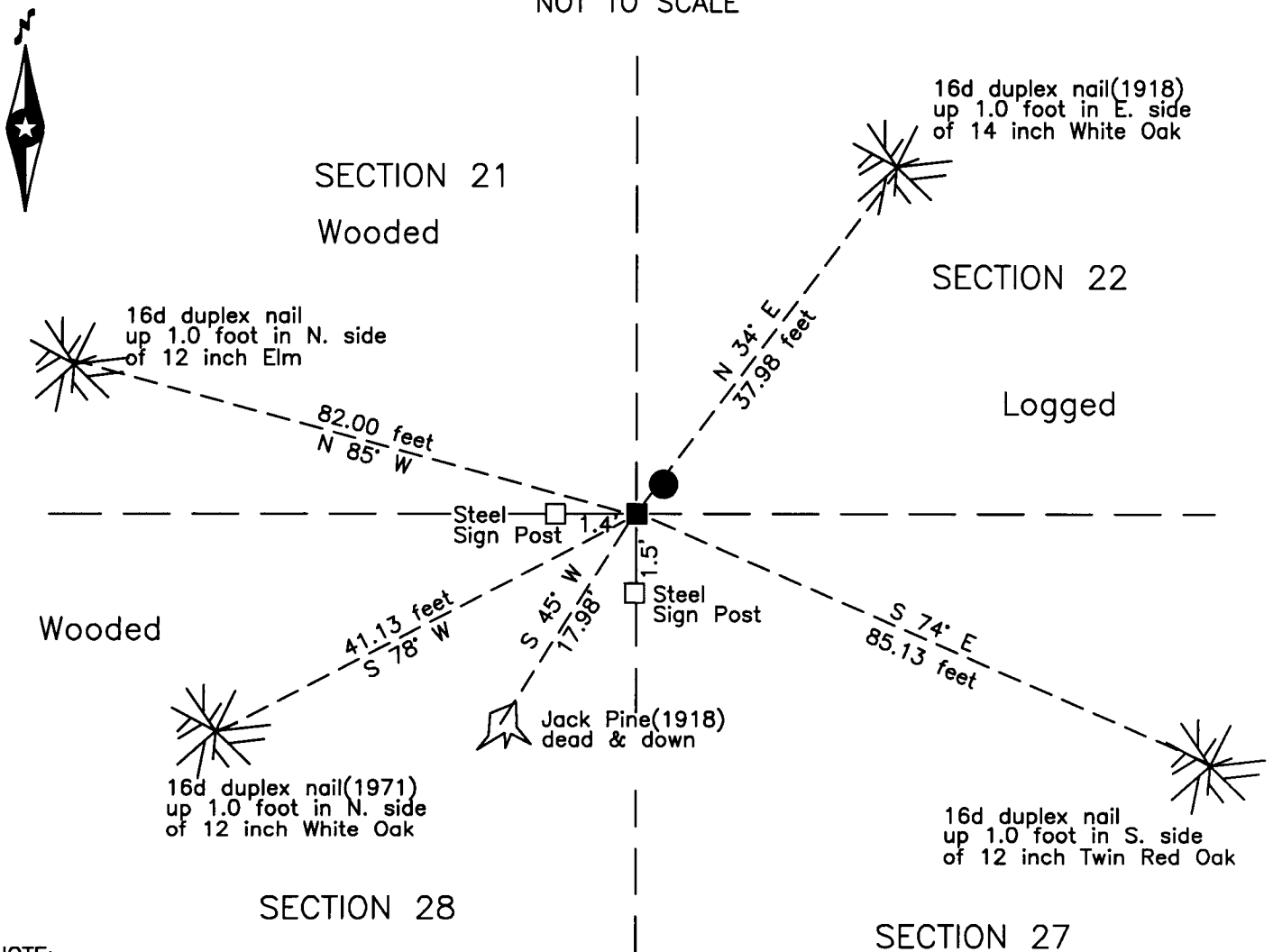
At the corner location shown on the sketch:

On 28 April 2017 found a rail road rail, up 0.3 foot, 0.7 foot, southwest of  
GLO brass cap on 2 inch outside diameter iron pipe.

left monument as found     lowered monument     removed monument (explain)

On \_\_\_\_\_ placed \_\_\_\_\_

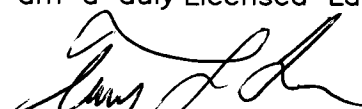
SKETCH OF REFERENCE TIES  
NOT TO SCALE



NOTE:  
All bearings are true

Statement of evidence relative to this corner location is on the back of this page.

I hereby certify that this survey, plan or report was prepared by me or under my direct supervision and that I am a duly Licensed Land Surveyor under the laws of the State of Minnesota.

  
Terry L. Freeman, Cass County Surveyor  
Date 5/17/17 MN License No. 21367

Page 1 of 2  
A000630909

**Index No. R.0-13.0**

Statement of Evidence

**Northeast corner of Section 28, Township 141 North, Range 28 West, 5th Principal Meridian.**

- July 1874 P.H. Conger, General Land Office (GLO) Deputy Surveyors in the notes of the subdivision of Township 141 North, Range 28 West, set a post for the original corner and referenced it as follows:  
 14" W. Pine      S 37° E      8 links ( 5.28 feet)      6" Birch      N 51° W      24 links (15.84 feet)  
 4" Birch      S 54° E      32 links (21.12 feet)
- Sept. 1918 E.G. Harrington, GLO, U.S. Cadastral Engineer, found a rail road iron as evidence of original corner, in addition to this he set an iron post , 3 ft. long, 2 in. diam. with brass cap. He found a Norway Pine stump with scribing to northeast and believes this is an error in original notes The following references are noted;  
 26" N. Pine(GLO)    S 37° E      8 links ( 5.28 feet)    7" W. Oak      N 34° E      57 links (37.62 feet)  
 18" R. Oak      S 24 1/4° E    178 links (117.48 feet)    8" J. Pine      S 44 1/2° W    27 links (17.82 feet)  
 10" W. Oak      N 82 1/4° W    226 links (149.16 feet)  
 The above records are on file with the Minnesota Historical Society, St. Paul, Minnesota, copies are filed with the Cass County Highway Department, Surveyor's Office (CCHD/SO).
- April 1971 C.R. Krause, technician, United States Department of Agriculture, Forest Service (USFS), Field Book #3, page 43, on file in the Cass Lake Office, indicates he found the GLO Monument, up 8 inches, fence line north and south, iron rail set next to corner and lists witnesses as follows:  
 20" Pine stp(GLO)      S 37° E      5.28 feet      13" W. Oak(1918)      N 30° E      38.00 feet  
 Oak stump(1918)      S 24 1/4° E    117.48 feet    16" J. Pine(1918)    S 44 1/2° W    17.82 feet  
 16" W. Oak stp(1918)    N 82 1/4° W    149.16 feet    8" W. Oak      N 23° W      32.8 feet  
 7" Elm      S 31° E      69.8 feet      9" W. Oak      S 72° W      41.5 feet  
 Steel Sign Post      West      1.6 feet      Steel Sign Post      South      1.9 feet
- Oct. 1971 W.C. Okerman, LS 6867, USFS, filed a Certificate of Location of Government Corner, on the Krause information, in the Cass County Recorders Office(CCRO), as Document No. A000587833.
- Jan. 1974 R.F. Schneider LS 5740, Plat of RAMBLING ACRES, on file in the CCRO, as Document No. 214001, indicates the subject corner.
- June 2016 B. Hippen, technician, records of the CCHD/SO, found the GLO Monument, up 0.6 foot, in good condition and Rail road rail, southwest 0.7 foot, witnessed as follows:  
 13" W. Oak(1918)      N 34° E      37.98 feet      Dead J. Pine(1918)    S 45° W      17.99 feet  
 12" W. Oak(1971)      S 78° W      41.13 feet      12" Elm      N 85° W      82.00 feet  
 12" Twin R. Oak      S 74° E      85.13 feet      Steel Sign Post(1971)    West      1.4 feet  
 Steel Sign Post(1971)    South      1.5 feet

The monument, recovered and established references for the position are shown on the face of this document.

**Analysis of the recovered record data, field evidence and survey measurements, indicates that the monument recovered by the CCHD/SO in 2016 is the correct perpetuation of this corner.**

**County Coordinates (Cass County North)**  
**Northing 174647.23**  
**Easting 497718.42**