



A000630908

OFFICE OF THE COUNTY RECORDER
CASS COUNTY, MINNESOTA
CERTIFIED, FILED, AND/OR
RECORDED ON

5/18/2017 11:02:50 AM

AS DOC #: A000630908

PAGES: 2

REC FEES: 0.00

KATHRYN M. NORBY
CASS COUNTY RECORDER

BY SR _____ Dep TX#: 138511

Twp 141 Rge 28 Index No. R.0-11.0

CERTIFICATE OF LOCATION OF GOVERNMENT CORNER

North Quarter corner of Section 28, Township 141 N., Range 28 W., 5th P.M.

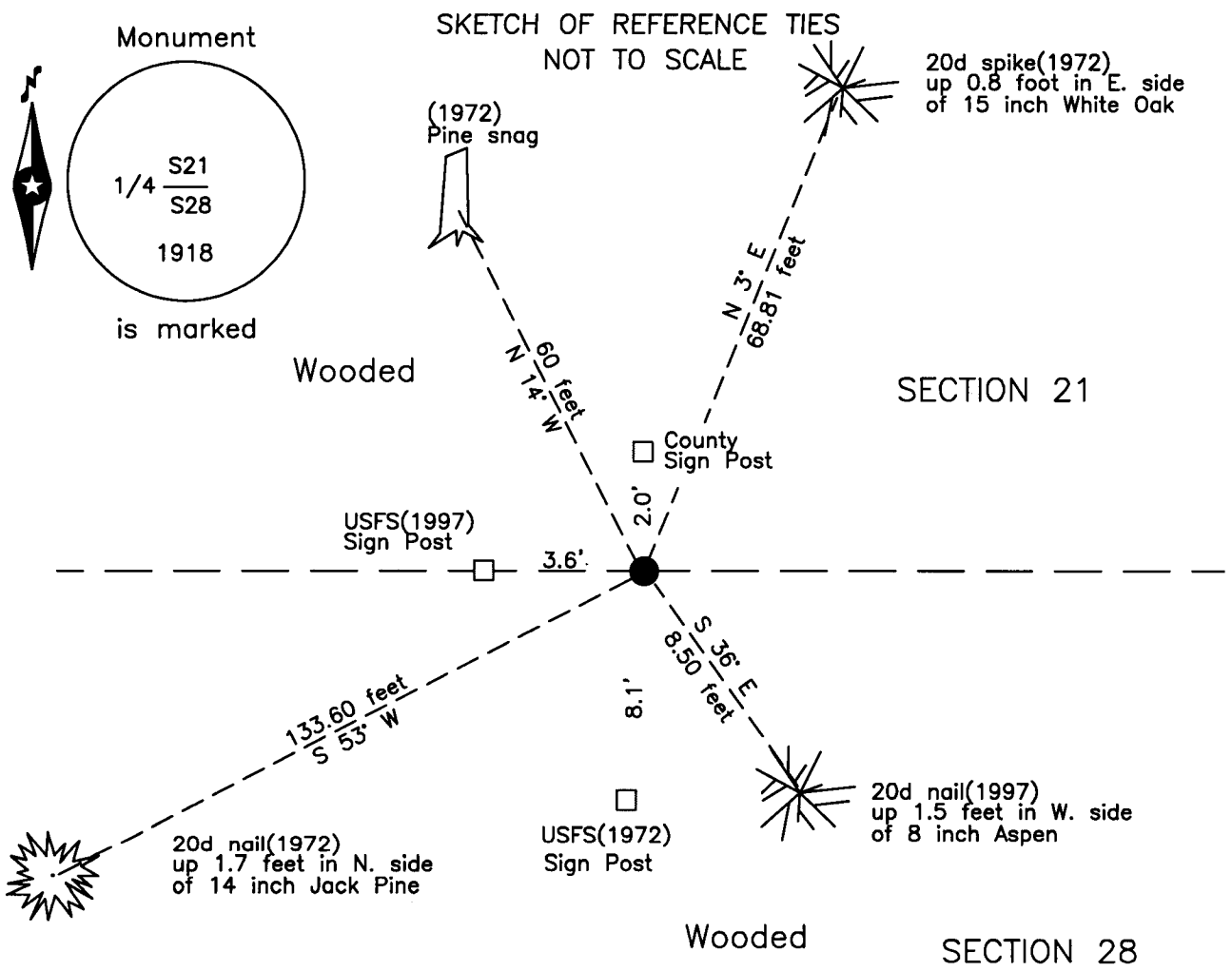
State of Minnesota, County of Cass

At the corner location shown on the sketch:

On 16 Dec 2016 found a 1 inch iron pipe with GLO brass cap, up 1.0 foot,
in good condition.

left monument as found lowered monument removed monument (explain)

On _____ placed _____



NOTE:
All bearings are true

Statement of evidence relative to this corner location is on the back of this page.

I hereby certify that this survey, plan or report was prepared by me or under my direct supervision and that I am a duly Licensed Land Surveyor under the laws of the State of Minnesota.

Terry L. Freeman, Cass County Surveyor
Date 5/17/17 MN License No. 21367



Index No. R.0-11.0

Statement of Evidence

North Quarter corner of Section 28, Township 141 North, Range 28 West, 5th Principal Meridian.

July 1874 P.H. Conger, General Land Office (GLO) Deputy Surveyors in the notes of the subdivision of Township 141 North, Range 28 West, set a post for the original corner and referenced it as follows:
14" N. Pine N 65° E 100 links (66.00 feet)

Sept. 1918 E.G. Harrington, GLO, U.S. Cadastral Engineer, found no evidence of original corner, at proportional position, set an iron post, 3 ft. long, 1 in. diam. with brass cap. The following references are noted;
10" J. Pine S 60 1/4° E 170 links (112.20 feet) 10" N. Pine N 4° W 282 links (186.12 feet)
The above records are on file with the Minnesota Historical Society, St. Paul, Minnesota, copies are filed with the Cass County Highway Department, Surveyor's Office (CCHD/SO).

Feb. 1972 J. Ekstrom, technician, United States Department of Agriculture, Forest Service (USFS), Field Book #1, page 66, on file in the Cass Lake Office, indicates he found the GLO Monument, up 12 inches, 200 feet, more or less, north of a field and witnessed as follows:
Burned stp(1918) S 60° E 112.2 feet 10" Oak N 3° E 68.5 feet
14" J. Pine N 14° W 59.9 feet 12" J. Pine S 56° W 133.9 feet
Steel Sign Post South 8.1 feet

Feb. 1974 W.C. Okerman, LS 6867, USFS, filed a Certificate of Location of Government Corner Survey, on the 1971 information, in the Cass County Recorders Office as Document No. A000587832.

March 1997 R. Main, technician, USFS, bearing tree tag, on site, indicates he found corner and added the following new witnesses:
7" Aspen S 36° E 8.50 feet Steel Sign Post West 3.6 feet

Dec. 2016 B. Hippen, technician, records of the CCHD/SO, found the GLO Monument, up 1.0 foot, in good condition and, witnessed as follows:
15" W. Oak(1972) N 3° E 68.81 feet Pine snag(1972) N 14° W 59.9 feet
12" J. Pine(1972) S 53° W 133.60 feet 8" Aspen(1997) S 36° E 8.50 feet
Steel Sign Post(1972) South 8.1 feet Steel Sign Post(1997) West 3.6 feet

The monument, recovered and established references for the position are shown on the face of this document.

Analysis of the recovered record data, field evidence and survey measurements, indicates that the monument recovered by the CCHD/SO in 2016 is the accepted location of this corner.

County Coordinates (Cass County North)

Northing 174684.90
Easting 495036.48