



A000630906

OFFICE OF THE COUNTY RECORDER
CASS COUNTY, MINNESOTA
CERTIFIED, FILED, AND/OR
RECORDED ON

5/18/2017 11:02:48 AM

AS DOC #: A000630906

PAGES: 2

REC FEES: 0.00

KATHRYN M. NORBY
CASS COUNTY RECORDER

BY SR _____ Dep TX#: 138511

Page 1 of 2 A000630906

Twp 141 Rge 28 Index No. R.0-07.0

CERTIFICATE OF LOCATION OF GOVERNMENT CORNER

North Quarter corner of Section 29, Township 141 N., Range 28 W., 5th P.M.

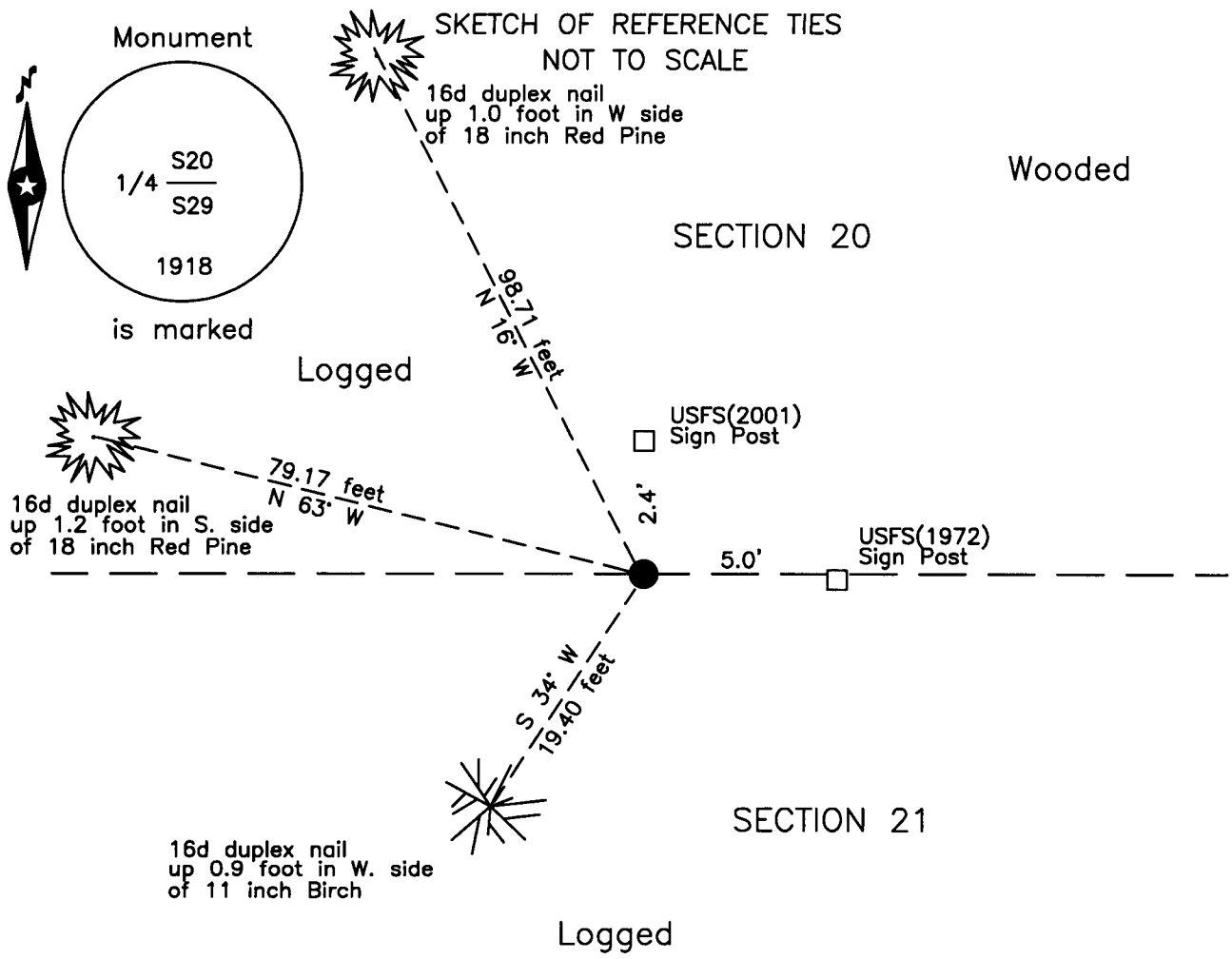
State of Minnesota, County of Cass

At the corner location shown on the sketch:

On 3 April 2017 found a 1 inch iron pipe with GLO brass cap, top bent,
at corner of logging.

left monument as found lowered monument removed monument (explain)

On _____ placed _____



NOTE:
All bearings are true

Statement of evidence relative to this corner location is on the back of this page.

I hereby certify that this survey, plan or report was prepared by me or under my direct supervision and that I am a duly Licensed Land Surveyor under the laws of the State of Minnesota.

Terry L. Freeman, Cass County Surveyor
Date 5/17/17 MN License No. 21367



Index No. R.0-07.0

Statement of Evidence

North Quarter corner of Section 29, Township 141 North, Range 28 West, 5th Principal Meridian.

July 1874 P.H. Conger, General Land Office (GLO) Deputy Surveyor in the notes of the subdivision of Township 141 North, Range 28 West, set a post for the original corner and referenced it as follows:
7" Poplar N 18° W 24 links (15.84 feet) 6" Poplar S 10° W 11 links (7.26 feet)

Sept. 1918 E.G. Harrington, GLO, U.S. Cadastral Engineer, found no evidence of original corner, at proportional position, set an iron post, 3 ft. long, 1 in. diam. with brass cap. The following references are noted;
8" J. Pine S 83 1/2° W 17 links (11.22 feet) 10" J. Pine N 20 3/4° W 13 links (8.58 feet)
The above records are on file with the Minnesota Historical Society, St. Paul, Minnesota, copies are filed with the Cass County Highway Department, Surveyor's Office (CCHD/SO).

Nov. 1972 J. Ekstrom, technician, United States Department of Agriculture, Forest Service (USFS), Field Book #4, page 20, on file in the Cass Lake Office, indicates he found the GLO Monument in good condition and witnesses as follows:
Dead snag(1918) S 83 1/2° W 11.22 feet 19" Oak N 63° W 79.0 feet
17" N. Pine N 16° W 98.8 feet 10" Birch S 34° W 19.3 feet
Steel Sign Post East 5.0 feet

Feb. 1974 W.C. Okerman, LS 6867, USFS, filed a Certificate of Location of Government Corner Survey, on the 1972 information, in the Cass County Recorders Office as Document No. A000587831.

Feb. 2001 R. Main, technician, USFS, Field Book #4, page 20, on file in the Cass Lake Office, indicates he found the corner and added the following:
Steel Sign Post North 2.4 feet

April 2017 B. Hippen, technician, records of the CCHD/SO, found the GLO Monument, top 0.9.0 foot is bent to the ground, witnessed as follows:
18" N. Pine(1972) N 16° W 98.71 feet 11" Birch(1972) S 34° W 19.40 feet
18" N. Pine(1972) N 63° W 79.17 feet Steel Sign Post(1972) East 5.0 feet
Steel Sign Post(2001) North 2.4 feet

The monument, recovered and established references for the position are shown on the face of this document.

Analysis of the recovered record data, field evidence and survey measurements, indicates that the monument recovered by the CCHD/SO in 2017 is the accepted location of this corner.

County Coordinates (Cass County North)

Northing 174774.46

Easting 489712.24