

Page 1 of 2 A000630903



A000630903

OFFICE OF THE COUNTY RECORDER
CASS COUNTY, MINNESOTA
CERTIFIED, FILED, AND/OR
RECORDED ON

5/19/2017 11:02:45 AM

AS DOC #: A000630903

PAGES: 2

REC FEES: 0.00

KATHRYN M. NORBY
CASS COUNTY RECORDER

BY SR _____ Dep TX#: 138511

Twp 141 Rge 28 Index No. P.0-07.0

CERTIFICATE OF LOCATION OF GOVERNMENT CORNER

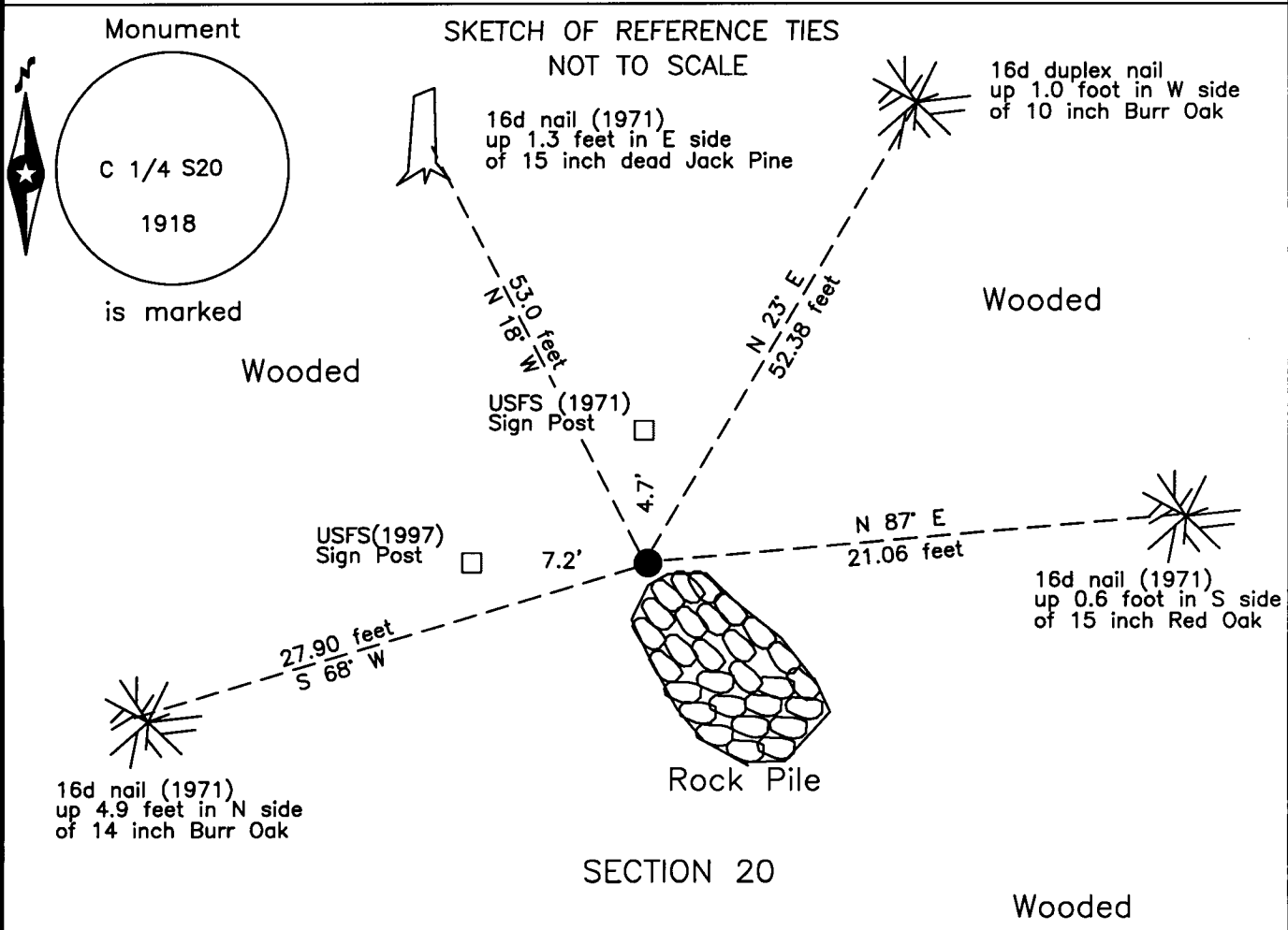
Center Quarter corner of Section 20, Township 141 N., Range 28 W., 5th P.M.
State of Minnesota, County of Cass

At the corner location shown on the sketch:

On 30 Mar 2017 found a 1 inch iron pipe with GLO brass cap, up 0.6 foot,
45 feet± west of a Pond at northeast end of a rock pile.

left monument as found lowered monument removed monument (explain)

On _____ placed _____



NOTE:
All bearings are true

Statement of evidence relative to this corner location is on the back of this page.

I hereby certify that this survey, plan or report was prepared by me or under my direct supervision and that I am a duly Licensed Land Surveyor under the laws of the State of Minnesota.

Terry L. Freeman, Cass County Surveyor
Date 5/17/17 MN License No. 21367



Index No. P.0-07.0

Statement of Evidence

Center Quarter corner of Section 20, Township 141 North, Range 28 West, 5th Principal Meridian.

Sept. E.G. Harrington, GLO, U.S. Cadastral Engineer, set an iron post , 3 ft. long, 1 in. diam.26 ins. In the ground, with
1918 brass cap, for the center quarter corner. The following references are noted;
8" J. Pine N 42 1/2° E 47 links (31.02 feet) 7" J. Pine S 4 1/2° W 99 links (65.34 feet)
The above records are on file with the Minnesota Historical Society, St. Paul, Minnesota, copies are filed with the
Cass County Highway Department, Surveyor's Office (CCHD/SO).

Nov. J. Ekstrom, technician, United States Department of Agriculture, Forest Service (USFS), Field Book #5, page 48,
1972 on file in the Cass Lake Office, indicates he found the GLO Monument, in good condition and remains of GLO
witnesses at bearing and distance and witnessed as follows:
11" R. Oak N 87° E 21.0 feet 14" J. Pine N 18° W 53.0 feet
13" W. Oak S 68° W 28.0 feet Steel Sign Post North 5.0 feet

Feb. W.C. Okerman, LS 6867, USFS, filed a Certificate of Location of Government Corner Survey, on the 1972
1974 information, in the Cass County Recorders Office as Document No. A000587819.

Feb. R. Main, technician, USFS, Field Book #5, page 48, on file in the Cass Lake Office, indicates he found the GLO
1997 Monument and 1972 witnesses, added witness as follows:
Steel Sign Post West 7.25 feet

March B. Hippen, technician, records of the CCHD/SO, found the GLO Monument, up 0.6 foot, in good condition and
2017 witnessed as follows:
15" J. Pine dead(1972) N 18° W 53.0 feet 14" B. Oak(1972) S 68° W 27.90 feet
15" R. Oak(1972) N 87° E 21.06 feet 10" B. Oak N 23° E 52.38 feet
Steel Sign Post(1972) North 4.7 feet Steel Sign Post(1997) West 7.2 feet

The monument, recovered and established references for the position are shown on the face of this document.

Analysis of the recovered record data, field evidence and survey measurements, indicates that the monument recovered by the CCHD/SO in 2017 is the accepted location of this corner.

County Coordinates (Cass County North)
Northing 177444.98
Easting 489741.06