



A000630645

OFFICE OF THE COUNTY RECORDER  
CASS COUNTY, MINNESOTA  
CERTIFIED, FILED, AND/OR  
RECORDED ON

5/10/2017 2:06:46 PM

AS DOC #: A000630645

PAGES: 2

REC FEES: 0.00

KATHRYN M. NORBY  
CASS COUNTY RECORDER

BY KF Dep TX#: 138309

Page 1 of 2  
A000630645

### CERTIFICATE OF LOCATION OF GOVERNMENT CORNER

Index No. E.0 - 21.0

NE Corner of Section 11, Township 136, Range 32, 5 P.M.

STATE OF MINNESOTA, County of CASS

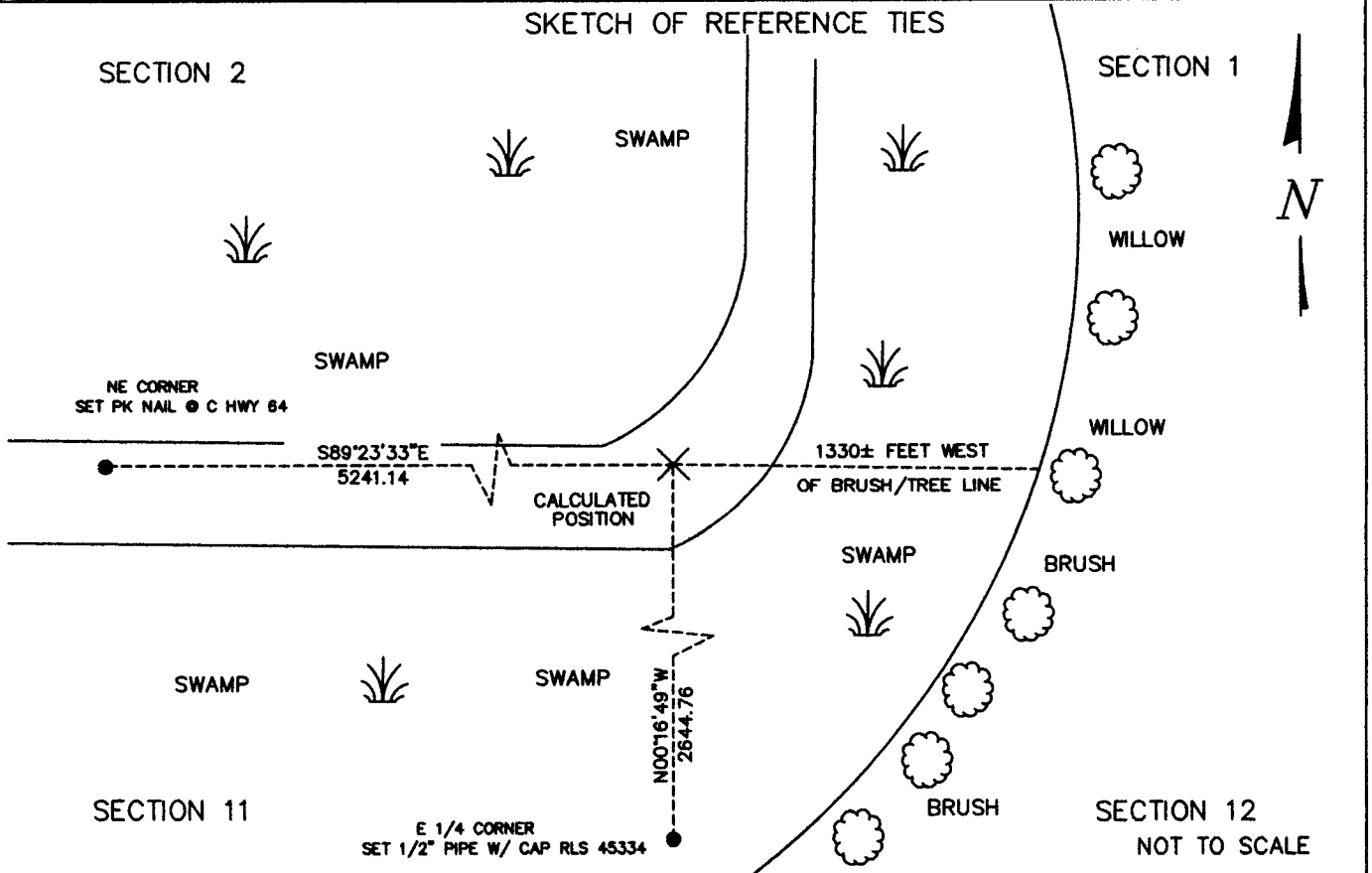
At the corner location shown on the sketch:

On \_\_\_\_\_ found a \_\_\_\_\_  
date

left monument as found,  lowered monument,  removed monument (explain)

On MARCH 13, 2017 placed a NO MONUMENT FOUND OR SET NOTHING DUE TO WATER DEPTH AND CENTERLINE OF DITCH  
date

#### SKETCH OF REFERENCE TIES



Statement of evidence relative to this corner location is on back of this page.

I hereby certify that this document was researched and prepared by me or under my direct supervision.

SIGNATURE Ross M. [Signature]

DATE 3-31-2017 Registration No. 45334

Title:  Land Surveyor  Professional Engineer  County Surveyor  County Engineer



E.0 – 21.0

The Northeast Corner of Section 11, Township 136 North, Range 32 West of the Fifth Principal Meridian, Cass County, Minnesota, was established as part of the Original Public Land Survey during 1866. The Original Public Land Survey was done by Oscar Garrison, U.S. Deputy Surveyor. The Original monumentation was a set wood post to mark this corner position with bearing trees as follows:

10" Dead Tamarack N70°E – 15 links (9.60 feet)  
8" Dead Tamarack S30°30'E – 35 links (23.10 feet)

Information on file in the MN Historical Society, St. Paul, MN. Copies in file in the Cass County Highway Dept. Surveyors Office (CCHD/SO).

March 5, 1919, J.A. Pomasal and E. Felton surveyed Judicial Ditch No. 7 - Lateral No.2. in Ditch Road Book – Field Book 2 - 10 page 1-18. Staked out ditch 28 feet South and 28 feet East of the NE corner (Nothing stated found at the corner) and ran west on random line to the N ¼ corner 2610.1 feet and found the N ¼ corner 38 feet south.

Witness Corners as follows:

Reference Point 3" Birch SE – 46.8 feet  
Reference Point 10" Dead Tamarack Snag W – 44.2 feet

Information on file in CCHD/SO.

On March 13, 2017 Survey Mapping Solutions, Inc. (SMS) survey crew searched for the corner and found nothing. Calculated a new position based on a lost position utilizing the Pomasal and E. Felton survey of Judicial Ditch No. 7 - Lateral No.2. in Ditch Road Book. This corner was computed using a lost position and the corner falls into open water south existing drainage ditch.

The recovered and established references for the position are shown on the face of this document. Analysis of the recovered data, field evidence and survey measurements, indicates that the monument set in 2017 by SMS is the correct perpetuation of this corner. Witness corners are as follows:

No ties are available:

Contacts pertaining to this corner are as follows:

Cass County Recorder's Office  
Cass County Surveyor's Office  
Cass County Engineer's Office  
MN DNR, Division of Lands and Minerals, Survey Section  
MN DOT District Surveys Office in Baxter

Section Corner Only Calculated - Not Set

Datum: Cass County South Coordinates  
Geodetic Position NAD 83 (1996 HARN Adj.)

N = 267539.574  
E = 447344.919