



A000630638

OFFICE OF THE COUNTY RECORDER
CASS COUNTY, MINNESOTA
CERTIFIED, FILED, AND/OR
RECORDED ON

5/10/2017 2:06:39 PM

AS DOC #: A000630638

PAGES: 2

REC FEES: 0.00

KATHRYN M. NORBY
CASS COUNTY RECORDER

BY KF Dep TX#: 138309

Page 1 of 2 A000630638

CERTIFICATE OF LOCATION OF GOVERNMENT CORNER

Index No. P.0 - 9.0

E 1/4 Corner of Section 20, Township 136, Range 31, 5 P.M.

STATE OF MINNESOTA, County of CASS

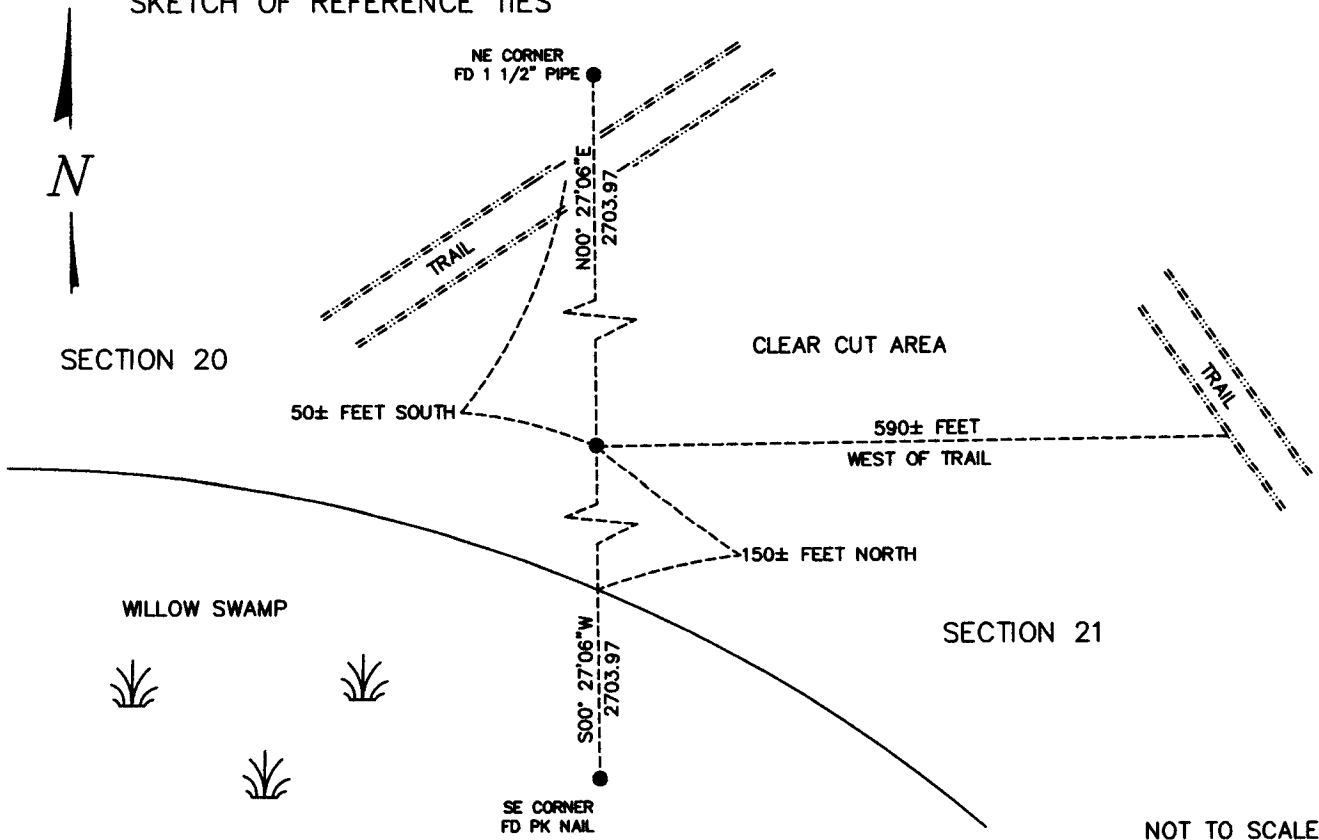
At the corner location shown on the sketch:

On _____ date found a _____

left monument as found, lowered monument, removed monument (explain)

On MARCH 27, 2017 date placed a 5/8" PIPE EDGE OF CLEARING & 90± NORTH OF WOOD EDGE

SKETCH OF REFERENCE TIES



Statement of evidence relative to this corner location is on back of this page.

I hereby certify that this document was researched and prepared by me or under my direct supervision.

SIGNATURE *Kathryn M. Norby*

DATE 3-31-2017 Registration No. 45334

Title: Land Surveyor Professional Engineer County Surveyor County Engineer



P.0 – 9.0

The East Quarter Corner of Section 20, Township 136 North, Range 31 West of the Fifth Principal Meridian, Cass County, Minnesota, was established as part of the Original Public Land Survey during 1870. The Original Public Land Survey was done by Richard Cronk, U.S. Deputy Surveyor. The Original monumentation was a set wood post to mark this corner position with bearing tree as follows:

16" White Pine S9°E – 80 links (52.80 feet)

24" White Pine N45°W – 35 links (23.10 feet)

Information on file in the MN Historical Society, St. Paul, MN. Copies in file in the Cass County Highway Dept. Surveyors Office (CCHD/SO).

On March 9, 2017 Survey Mapping Solutions, Inc. (SMS) survey crew searched for the corner and found nothing. Calculated a new position based on a lost position proportionately between NW and SW corners.

On March 27, 2016, a Survey Mapping Solutions, Inc. (SMS) survey crew set a 5/8" pipe with a cap stamped "RLS 45334" in a cleared area, approximately 75 ± feet east of wood edge.

The recovered and established references for the position are shown on the face of this document. Analysis of the recovered data, field evidence and survey measurements, indicates that the monument set in 2017 by SMS is the correct perpetuation of this corner.

No ties are available:

Contacts pertaining to this corner are as follows:

Cass County Recorder's Office

Cass County Surveyor's Office

Cass County Engineer's Office

MN DNR, Division of Lands and Minerals, Survey Section

MN DOT District Surveys Office in Baxter

Quarter Corner observed by GPS

Datum: Cass County South Coordinates

Geodetic Position NAD 83 (1996 HARN Adj.)

N = 254366.11

E = 465443.09