



A000630637

OFFICE OF THE COUNTY RECORDER
CASS COUNTY, MINNESOTA
CERTIFIED, FILED, AND/OR
RECORDED ON

5/10/2017 2:06:38 PM

AS DOC #: A000630637

PAGES: 3

REC FEES: 0.00

KATHRYN M. NORBY
CASS COUNTY RECORDER

BY KF Dep TX#: 138309

Page 1 of 3
A000630637

CERTIFICATE OF LOCATION OF GOVERNMENT CORNER

Index No. N.0 - 13.0

NE Corner of Section 21, Township 136, Range 31, 5 P.M.
STATE OF MINNESOTA, County of CASS

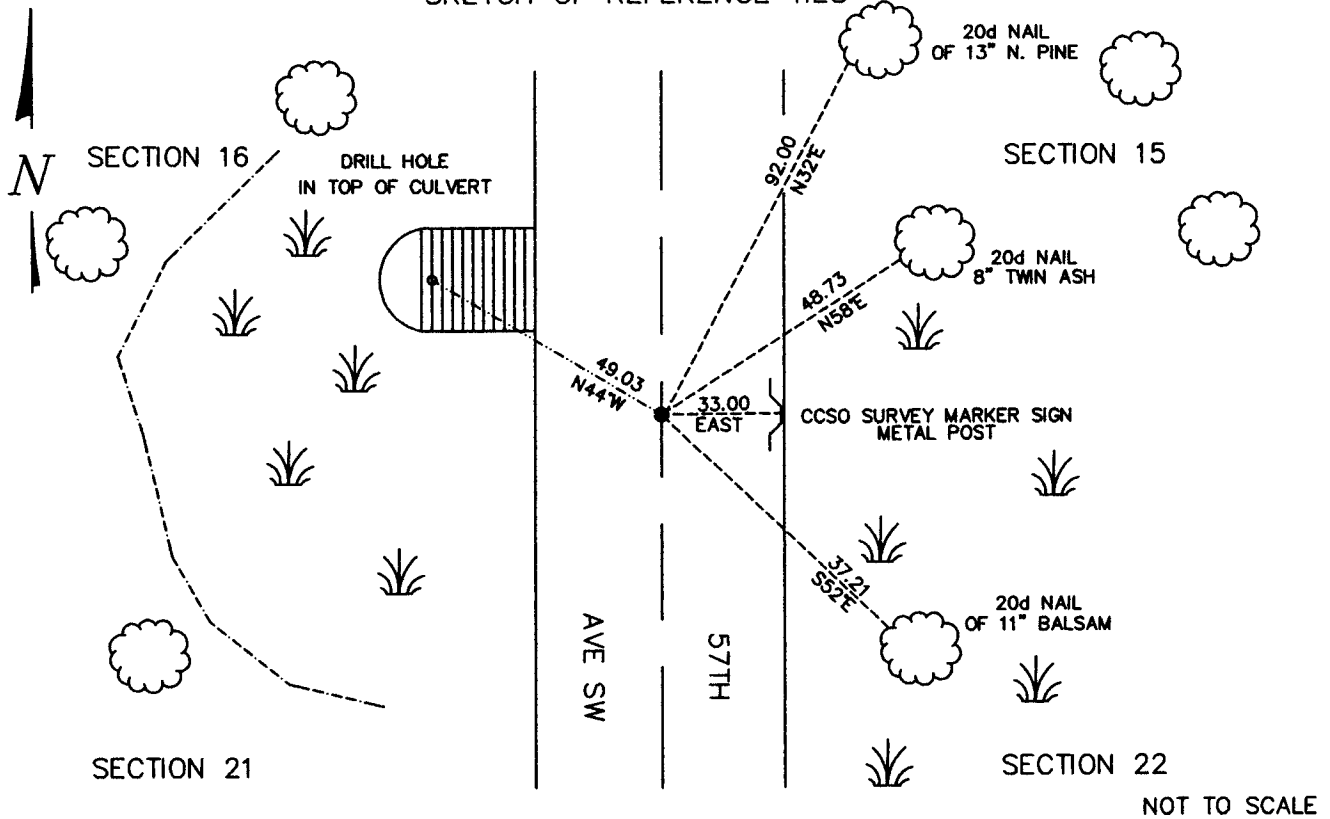
At the corner location shown on the sketch:

On MARCH 8, 2017 found a SPIKE W/WASHER DOWN 0.5 FEET IN C. OF 57TH AVE SW
date

left monument as found, lowered monument, removed monument (explain)

On _____ date placed a _____

SKETCH OF REFERENCE TIES



Statement of evidence relative to this corner location is on back of this page.

I hereby certify that this document was researched and prepared by me or under my direct supervision.

SIGNATURE *Ross Wane*

DATE 3-31-2017 Registration No. 45334

Title: Land Surveyor Professional Engineer County Surveyor County Engineer



N.0 – 13.0

The Northeast Corner of Section 21, Township 136 North, Range 31 West of the Fifth Principal Meridian, Cass County, Minnesota, was established as part of the Original Public Land Survey during 1870. The Original Public Land Survey was done by Richard Cronk, U.S. Deputy Surveyor. The Original monumentation was a set wood post to mark this corner position with bearing tree as follows:

10" Tamarack N76°W – 10 links (6.60 feet)
8" Tamarack N58°E – 5 links (3.30 feet)
6" Tamarack S65°W – 9 links (5.94 feet)
12" Tamarack S54°E – 22 links (14.52 feet)

Information on file in the MN Historical Society, St. Paul, MN. Copies in file in the Cass County Highway Dept. Surveyors Office (CCHD/SO).

1903, W.M. Hallett, Cass County Engineer, shows road on the North line of Section 19 on file in Township Road Orders.

Copies in file in the Cass County Highway Dept. Surveyors Office (CCHD/SO).

October 3, 1905, W.M. Hallett, shows road on the North line of Section 19, on Certificate of Survey.

Copies in file in the Cass County Highway Dept. Surveyors Office (CCHD/SO).

1913, John Curo resurveyed Moose Lake Township and found original government bearing trees and set a 2 ½" x 48" iron pipe in concrete. County Survey Record Book "B" page 12-28.

1922, E. B. Horst found monument and set a 1 ½" x 48" iron monuments. Curo Book 185 pages 36-41. County Survey Record Book "D" page 184.

Witness Corners as follows:

Set 1 ½" x 30" Iron monument N45°E – 46.7 feet
Set 1 ½" x 30" Iron monument N45°W – 46.7 feet

Information on file in CCHD/SO.

1986, David Landecker (#17008) found the iron monument set by E.B.Horst as a tie in the Northwest quadrant and uses the tie to re-establish the Northeast corner. The field crew set cast iron county monument 0.5 below the road surface.

Witness Corners as follows:

Found 1 ½" x 30" Iron monument N 45°W – 46.7 feet
Nail & Blaze on 10" N. Pine, N32°E – 92.00 feet
Nail & Blaze on twin 8" Ash, N85°E – 48.73 feet
Nail & Blaze on 8" Balsam, S52°E – 37.21 feet

Information on file in CCHD/SO and COLOGC in Doc. A000247692.

May 1999, the CCSO found CIM, down 0.5' feet below the road surface on centerline and 28' ± south of fence line to the west. Witness corners area as follows:

20d Nail in 13" N. Pine, N32°E – 92.00 feet
20d Nail in twin 8" Ash, N85°E – 48.73 feet
20d Nail in 8" Balsam, S52°E – 37.21 feet
CCSO Survey Marker Sign, East – 32.00 feet

On October 10, 2002, the CCSO set spike with washer from the ties and collected a location with GPS.

Information on file in CCHD/SO.

On March 9, 2017 Survey Mapping Solutions, Inc. (SMS) survey crew located large spike with a washer, down 0.5 foot below the road surface. Located in the centerline of 57th Avenue SW.



N.0 – 13.0

The recovered and established references for the position are shown on the face of this document. Analysis of the recovered record data, field evidence and survey measurements, indicates that the monument set by David Landecker (#17008) is the correct perpetuation of this corner. Also the position fits both Horst and Curo surveys. Witness corners area as follows:

20d Nail in 13" N. Pine, N32°E – 92.00 feet
20d Nail in twin 8" Ash, N85°E – 48.73 feet
20d Nail in 8" Balsam, S52°E – 37.21 feet
CCSO Survey Marker Sign, East – 33.00 feet
Dill Hole Top of 24" CMP Culvert, N44°W – 49.03 feet

Contacts pertaining to this corner are as follows:

Cass County Recorder's Office
Cass County Surveyor's Office
Cass County Engineer's Office
MN DNR, Division of Lands and Minerals, Survey Section
MN DOT District Surveys Office in Baxter

Section Corner observed by GPS
Datum: Cass County South Coordinates
Geodetic Position NAD 83 (1996 HARN Adj.)

N = 257133.79
E = 470750.03