



A000630608

OFFICE OF THE COUNTY RECORDER  
CASS COUNTY, MINNESOTA  
CERTIFIED, FILED, AND/OR  
RECORDED ON

5/9/2017 1:33:47 PM

AS DOC #: A000630608

PAGES: 2

REC FEES: 0.00

KATHRYN M. NORBY  
CASS COUNTY RECORDER

BY SR Dep TX#: 138278

Twp 134 Rge 32

Index No. E.0-7.0

### CERTIFICATE OF LOCATION OF GOVERNMENT CORNER

North Quarter Corner of Section 8, Township 134 N., Range 32 W., 5th P.M.  
State of Minnesota, County of Cass

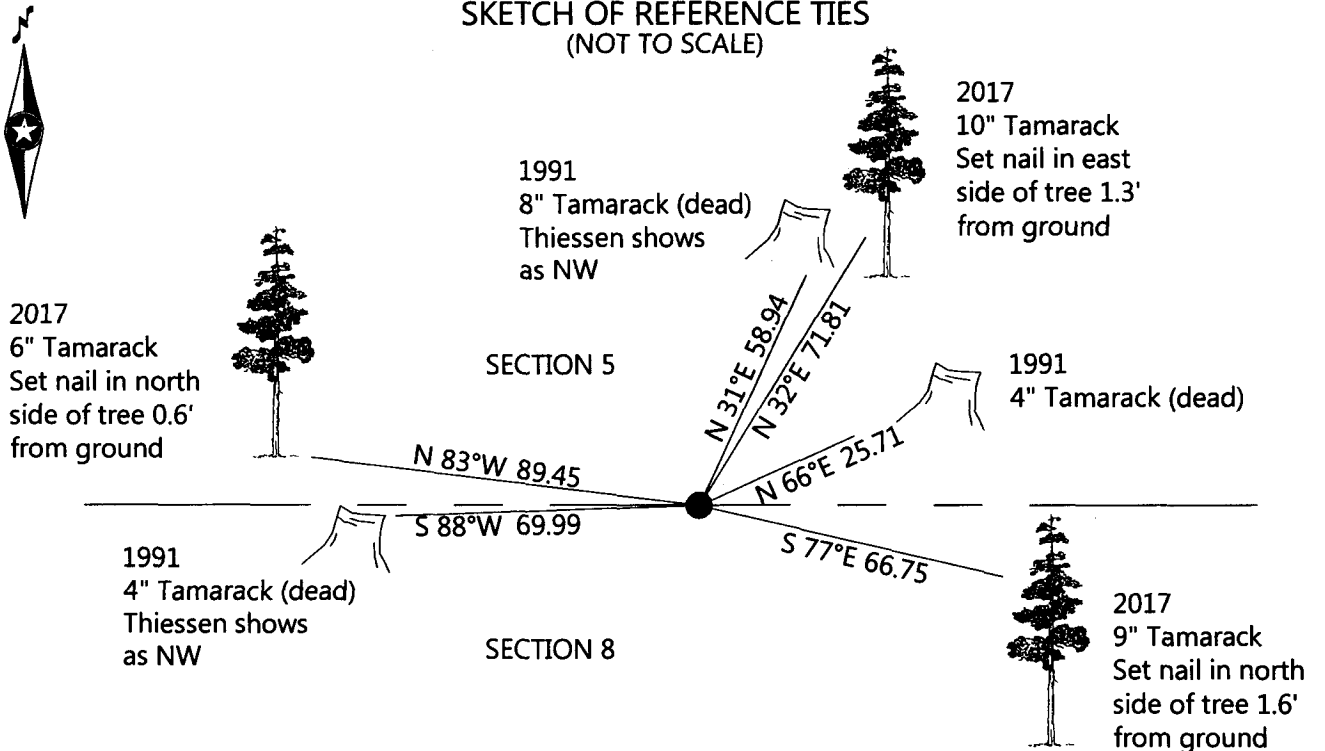
At the corner location shown on the sketch:

On March 21, 2017 found a 1.5" x 36' iron pipe lying down

left monument as found     lowered monument     removed monument (explain)

On March 21, 2017 placed 1/2" iron pipe with cap no. 47544 at the corner position using  
record distances from the recovered witnesses.

#### SKETCH OF REFERENCE TIES (NOT TO SCALE)



NOTE: All bearings are true.

Statement of evidence relative to this corner location is on the back of this page.

I hereby certify that this survey, plan, or report was prepared by me or under my direct supervision and that I am a duly Licensed land Surveyor under the laws of the State of Minnesota. I further certify that this United States public land survey monument record is correct and complete to the best of my knowledge and belief.

*Dennis J. Warner*  
Dennis J. Warner, Land Surveyor

Date 5-04-2017 MN License No. 42656

**STATEMENT OF EVIDENCE**

**North Quarter Corner of Section 8, Township 134 North, Range 32 West of the 5th Principal Meridian.**

**1870, Walker, Putnam & Allen, U.S. Deputy Surveyors, set a wood post to mark the corner location and established bearing trees as follows:**

Tamarack	6"	S 65° W	12 links (7.92')
Tamarack	5"	N 20° E	17 links (11.22')

Record on file with the Minnesota Historical Society in St. Paul, MN and copies filed with the Cass County Highway Department, Surveyors Office (CCHD/SO).

**1991 October, Thomas Thiessen, RLS 16097, from Cass County Land Corner Record, indicates no evidence of the post or bearing trees were found. He set a capped ½" iron pipe monument RLS 16097 at the lost position and lists the following witnesses:**

Tamarack	6"	NW	70.00'
Tamarack	4"	NW	58.92'
Tamarack	4"	NE	26.19'

Filed a Certificate of Location of Government Corner on 11-24-92 and recorded as Doc. No. 343243. Information on file in the CCHD/SO.

**1992 April, Thomas Thiessen, RLS 16097, filed a Certificate of survey which indicates he set the corner. Information on file in the CCHD/SO.**

**2005 July, Rodney F. Eldevik, RLS 19845, completed a Certificate of Survey and shows the corner as found. Information on file in the CCHD/SO.**

**2007 February, Jarrett Leas, RLS 42619, filed a Certificate of survey which indicates the corner as found. Information on file in the CCHD/SO.**

**2010 April, James Kramer, RLS 23668, completed a Certificate of Survey and shows the corner as found. Information on file in the CCHD/SO.**

**On March 21, 2017, a Northern Engineering & Consulting survey crew found a 1.5" by 36" iron pipe lying down on ground. They removed the found monument and set a ½" iron pipe with cap no. 47544 at record distance using the found witnesses. Witnesses were found and/or set as shown on the front of this certificate. I accept the found monument as a perpetuation of the original corner.**

**County Coordinates (Cass County South)**

Northing	204173.40
Easting	428966.54

