



A000630607

OFFICE OF THE COUNTY RECORDER
CASS COUNTY, MINNESOTA
CERTIFIED, FILED, AND/OR
RECORDED ON

5/9/2017 1:33:46 PM

AS DOC #: A000630607

PAGES: 2

REC FEES: 0.00

KATHRYN M. NORBY
CASS COUNTY RECORDER

BY SR Dep TX#: 138278

Page 1 of 2
A000630607

Twp 134 Rge 32 Index No. C.0-9.0

CERTIFICATE OF LOCATION OF GOVERNMENT CORNER

East Quarter Corner of Section 5, Township 134 N., Range 32 W., 5th P.M.
State of Minnesota, County of Cass

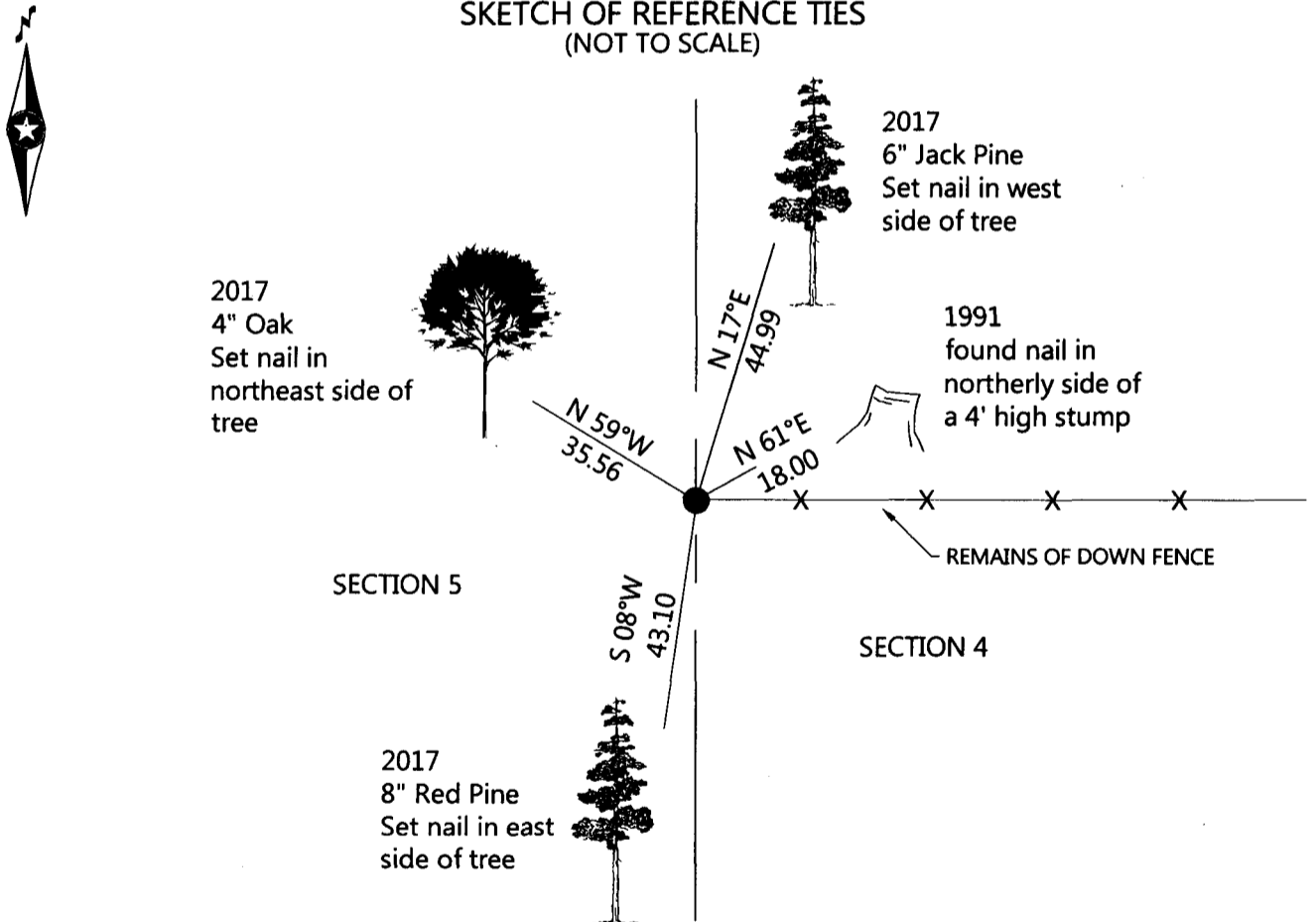
At the corner location shown on the sketch:

On March 21, 2017 found a 3/4" iron pipe

left monument as found lowered monument removed monument (explain)

On _____ placed _____

SKETCH OF REFERENCE TIES (NOT TO SCALE)



NOTE: All bearings are true.

Statement of evidence relative to this corner location is on the back of this page.

I hereby certify that this survey, plan, or report was prepared by me or under my direct supervision and that I am a duly Licensed land Surveyor under the laws of the State of Minnesota. I further certify that this United States public land survey monument record is correct and complete to the best of my knowledge and belief.

Dennis J. Warner
Dennis J. Warner, Land Surveyor

Date 5-04-2017 MN License No. 42656

STATEMENT OF EVIDENCE**East Quarter Corner of Section 5, Township 134 North, Range 32 West of the 5th Principal Meridian.**

1870 Walker, Putnam & Allen, U.S. Deputy Surveyors, set a wood post to mark the corner location and established bearing trees as follows:

Black Pine 5" S 30° W 21 links (13.86')

Black Pine 5" S 22° E 25 links (16.50')

Record on file with the Minnesota Historical Society in St. Paul, MN and copies filed with the Cass County Highway Department, Surveyors Office (CCHD/SO).

1991 October, Thomas Thiessen, RLS 16097, from Cass County Land Corner Record, indicates no evidence of the post or bearing trees were found. He set a capped ½" iron pipe monument RLS 16097 at an obliterated position using a north-south fence line and a fence line to the east and lists the following witnesses:

Jack Pine 10" North 37.07'

Jack Pine 8" NE 18.10'

Jack Pine 6" SE 35.36'

Jack Pine 8" SW 33.90'

Filed a Certificate of Location of Government Corner on 11-24-92 and recorded as Doc. No. 343234. Information on file in the CCHD/SO.

1992 April, Thomas Thiessen, RLS 16097, filed a Certificate of survey which indicates he set the corner. Information on file in the CCHD/SO.

2007 February, Jarrett Leas, RLS 42619, filed a Certificate of survey which indicates the corner as found. Information on file in the CCHD/SO.

On March 21, 2017, a Northern Engineering & Consulting survey crew found a 3/4" iron pipe with no cap at the corner. They found and/or set witnesses as shown on the front of this certificate. I accept the found monument as a perpetuation of the original corner.

County Coordinates (Cass County South)

Northing 206833.37

Easting 431642.27