



A000629803

OFFICE OF THE COUNTY RECORDER  
CASS COUNTY, MINNESOTA  
CERTIFIED, FILED, AND/OR  
RECORDED ON

4/5/2017 10:29:55 AM

AS DOC #: A000629803

PAGES: 2

REC FEES: 0.00

KATHRYN M. NORBY  
CASS COUNTY RECORDER

BY KF Dep TX#: 137599

Page 1 of 2 A000629803

INDEX NO. N.0-07.0

# CERTIFICATE OF LOCATION OF GOVERNMENT CORNER

N1/4 Corner of Section 20, Township 136 N., Range 32 W., 5TH P.M., State of Minnesota, County of Cass

At the corner location shown on the sketch:

On 4 OCT. 2014 found a MAG NAIL  
Date

left monument as found       lowered monument       removed monument (explain)

On \_\_\_\_\_ placed a \_\_\_\_\_  
Date

## SKETCH OF REFERENCE TIES

SPIKE IN 8" N. PINE (2004 TIE)

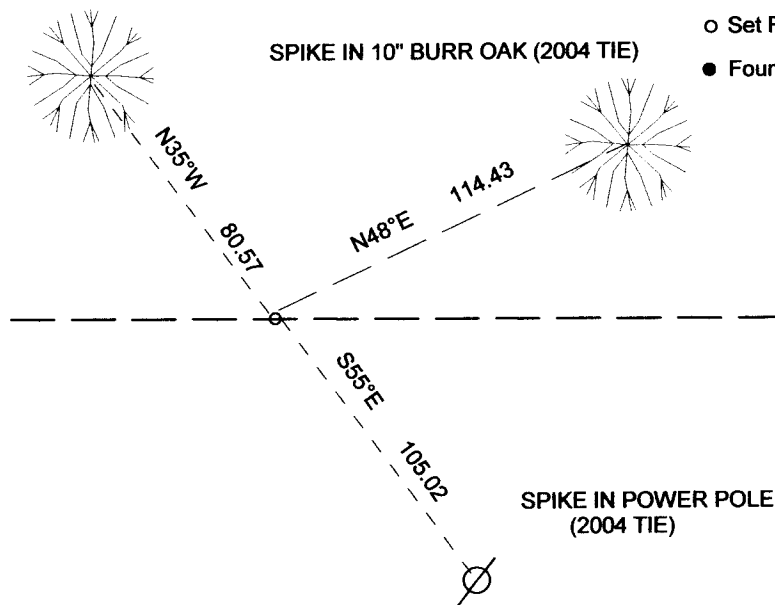
SPIKE IN 10" BURR OAK (2004 TIE)

Tie Distances are measured to the spikes.

Cass County Coordinate System (South Zone)  
N= 257017.88 E= 428808.27

o Set Re-Rod with RLS cap No. 17774

● Found Pipe



SPIKE IN POWER POLE  
(2004 TIE)

OFFICE OF COUNTY RECORDER

**NOT TO SCALE**

Statement of evidence relative to this corner location is on back of page.

I hereby certify that this document and the data contained herein was prepared by me or under my direct supervision.

Marvin R Kohout      3/24/2017  
Marvin R. Kohout      Date

License No. 17774

Land surveyor



**INDEX NO. N.0-07.0**

**STATEMENT OF EVIDENCE**

**NORTH QUARTER CORNER OF SECTION 20, TOWNSHIP 136N, RANGE 32W, 5<sup>TH</sup> P.M.**

1866 OSCAR E. GARRISON, DEPUTY GOVERNMENT SURVEYOR, SET A POST TO MARK THE CORNER LOCATION. REFERENCES:  
12" W. OAK N37 1/2W 53.46 FT  
6" BLACK PINE S78E 67.98 FT

RECORDS ON FILE AT THE MN HISTORICAL SOCIETY, ST. PAUL AND COPIES FILED WITH THE CASS COUNTY HIGHWAY DEPT/SURVEYOR'S OFFICE (CCHD/SO)

1918 E. B. HORST, LS 376, LOOKS FOR CORNER AND BT'S, ALL ARE GONE. SKETCH SHOWS NORTH LINE OF SECTION AT 5310.9 FT. COUNTY BOOK C, PAGE 107 CURO BOOK 65, PAGE 151 INFORMATION ON FILE IN CCHD/SO

1971 POSITION ASSUMED AT C/L EAST-WEST ROAD AND FENCE SOUTH AT STATION 75+ 67 PROJECT NO. 11-623 01 INFORMATION ON FILE IN CCHD/SO

2004 CASS COUNTY SURVEYOR'S OFFICE STAFF SET A MAGNETIC NAIL APPROX. 1 FOOT NORTH OF C/L COUNTY ROAD NO. 23 PER STATIONING FROM CCHD PLAN. REFERENCES: 8" N. PINE N 35 W 80.57 FT 10 BURR OAK N 48 E 114.43 FT  
POWER POLE S 55 E 105.02 FT CASS CO. HWY DEPT/SURVEYOR'S OFFICE  
PROJECT 2004.042

2014 MARVIN R. KOHOUT, LS 17774, KOHOUT LAND SURVEYING, AND ADAM HANSON, TECHNICIAN, NORTHWOODS SURVEYING, FOUND THE 2004 MAGNETIC NAIL AND REFERENCES. ACCEPTED THE NAIL AS MARKING THE CORNER POSITION.